

ROUND BRUSH

The Round Brush attachment is perfect for creating volume and style, loose curls, styling ends, and controlling cowlicks and flat spots. With the Round Brush you can blow out your hair in one step, creating loose waves and movement in hair that lacks texture.

Volume: Use the Round Brush at high speed and hot temperature and wrap ends upward no more than three rotations before unwinding to create effortless volume and movement in hair.

Curl: Use the Round Brush at high speed and hot temperature and hold vertically at top of head. Wrap section of hair around Round Brush and pull to ends in a twisting motion for soft curls.

Maria's Tip: For volume that lasts all day, spray section of hair with Calista Complete Texturizing Spray and let dry for 5 to 10 seconds before rolling the Round Brush. While using Round Brush, switch temperature to cool for 5 seconds before unwinding section. This allows the hair to cool before revealing the curl and ensures a longer lasting hold.

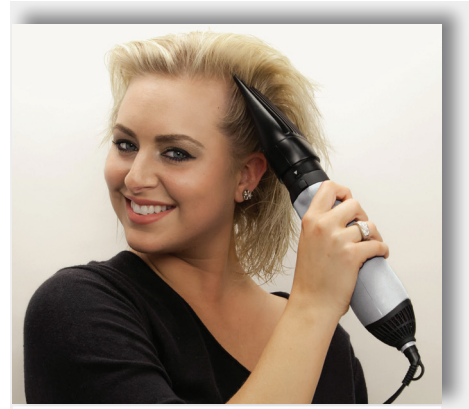


ROOT LIFT

The Root Lift attachment is used to add the look of extreme lift and volume at the roots. When looking to achieve full, voluminous hair that holds, the Root Lift will provide control to create a long lasting style.

Use Root Lift on root areas and underneath hair at high speed and warm temperature to add the look of volume and fullness. For best results, start with Root Lift at the bottom of hairline and work your way up to crown.

Maria's Tip: For the look of extreme volume in the root area, turn head upside down while using Root Lift.



CONCENTRATOR

The Concentrator attachment is used to complete drying hair, provide direct heat to specific areas and allow extra control of cowlicks and flat spots.

If hair is wet prior to using StyleDryer, attach Concentrator and use on high speed and warm temperature to blow dry hair in preparation for styling. Styling with other attachments from this point will give you optimal results.

Maria's Tip: To tame any cowlicks or puffiness, use Concentrator on high speed and warm temperature. Take the section to be fixed and use moderate tension to pull hair in desired direction. Place the Concentrator directly on the section for 5 to 10 seconds. Repeat until the cowlick or puffiness is smoothed away.



PADDLE BRUSH

The Paddle Brush attachment is used to smooth and straighten hair, and control cowlicks and flat spots.

Use the Paddle Brush on high speed and hot temperature. Slowly run through hair for a sleek hairstyle.

Maria's Tip: Apply Calista Achieve 10 Styling Cream to damp hair before using Paddle Brush. Achieve 10 helps address styling challenges including added body, smoothness, and excellent condition and hold.

