

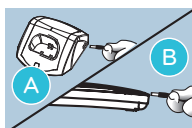
HairMax LaserComb Professional 12

QUICK START GUIDE

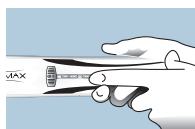
The HairMax LaserComb® is a very effective device when used correctly. It is manufactured using precision components. Please take time to read the entire User Manual before operating the HairMax LaserComb.

Recommended usage of the HairMax Professional 12 is 8 minutes 3 times per week. Move HairMax slowly 1/2 in (1cm) every 4 seconds.

It is recommended, but not essential, that the HairMax LaserComb be used on a clean scalp. Your hair can be wet, towel dried or dry. The HairMax LaserComb should be used prior to applying any other topical treatments, gels, spray or concealing products.



1. Charge your HairMax LaserComb using either the Charging Cradle and Power Cord (Figure A) or by placing Power Cord directly into the handle end of the HairMax (Figure B). For initial charging, allow 2-3 hours to fully charge your HairMax LaserComb. For more information, refer to your user manual.



2. To turn on HairMax LaserComb press and hold the Power Button (lower button) until the green indicator light turns on. Next press the Laser Button. The Laser Button Indicator will light up red which means the laser is ready for use.



3. Place HairMax LaserComb flat on your scalp making sure that both rows of teeth are touching the scalp.



4. Start at your hairline. Move the HairMax from front to back of scalp in a slow combing motion, pausing every 1/2 inch (1cm) for 4 seconds. Do not lift the HairMax off your scalp while combing from front to back. Next, lift the HairMax off your scalp and start at a new position at the hair line.

HairMax LaserComb Professional 12

QUICK START GUIDE



Continue in this manner from front to back and then side to side until you cover your entire scalp with multiple passes. The HairMax features an audible beep every 4 seconds which can aid you in timing the ½ inch (1cm) movements. Repeat these passes for the total treatment of 8 minutes. With long hair, use your fingers to lift your hair out of the way of the HairMax LaserComb.

5. After treatment, turn off the HairMax LaserComb by pressing and holding the Power Button (lower button) down until the green light turns off. Store the device in the Charging Cradle for future use. You may leave the power cord plugged into the charging cradle at all times.

Please Note:

- The total time required for treatment with the HairMax LaserComb is 8 minutes.
- It is important to move HairMax LaserComb very slowly. If you move the HairMax LaserComb too fast, the treatment will not be as effective.
- While there are no negative effects from overuse, it is recommended that you use the HairMax LaserComb according to directions.

HAIRMAX[®]
The science of hair growth.

©Copyright 2013 Lexington International, LLC. All rights reserved.

PLEASE REFER TO THE USER MANUAL FOR ADDITIONAL PRODUCT INFORMATION.

