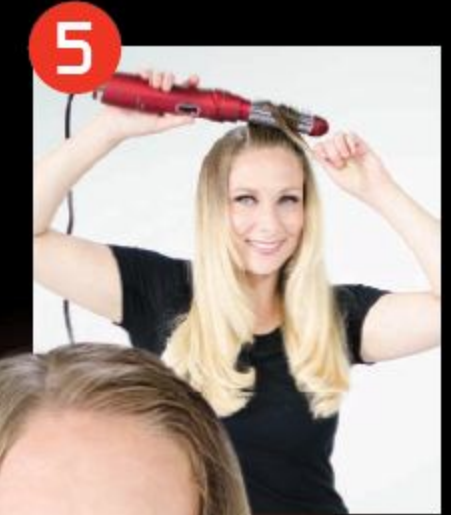


Before



1 Start by using CHI Smart Silk Volumizing Thermal Iron Guard Mist on wet hair, concentrating on roots and continue throughout the hair.

2 Attach the nozzle to the triStyler and rough dry the hair, at least 80%.

3 Using your fingers, section the hair from the corners of your ears until they touch in the back, twist the hair and secure with a clip. For thick hair, create another section in lower nape.

4 Detach the nozzle and attach the retractable brush. Starting with the bottom section, grab a half inch sub section. Place the triStyler with bristles extended under the hair at mid shaft and slide the switch to the HIGH position. Roll the triStyler all the way to the ends of the hair and rotate the triStyler.

5 After the hair is completely dry, roll the triStyler all the way to the root and slide the switch to the COOL position. Allow the hair to sit for 5 seconds to set the style.

After

