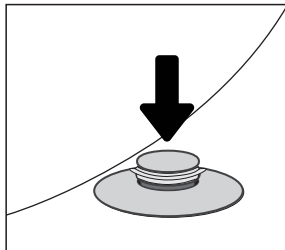
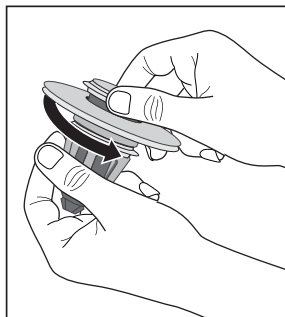


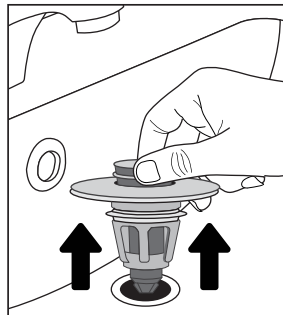
7. To allow water to drain after filling the sink, push down on center button to open sink stopper.



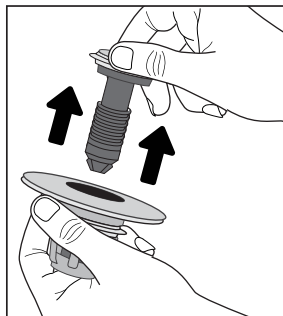
9. Remove Removable Button from Main Body to clean the hair catcher. Hold Main Body in one hand and the removable Button in the other hand. Turn Removable Button counter-clockwise.



8. Remove Mer-Maid™ Drain Magic™ to clean out hair catcher by pulling up on center button.



10. Remove Removable Button and clean debris from hair catcher. Screw Removable Button back on to Main Body and put back in sink drain.



*Mer-Maid*  
**Drain Magic™**

ITEM #1750



Product may vary from images shown.

**IMPORTANT SAFETY INSTRUCTIONS, READ AND FOLLOW ALL WARNINGS AND INSTRUCTIONS BEFORE USING THIS PRODUCT. INJURY CAN RESULT FROM IMPROPER USE. SAVE THESE INSTRUCTIONS.**

**LIMITATION OF LIABILITY**

Liability limited to the purchase price of this product. Telebrands Corp. shall not be liable for any incidental or consequential damages or any implied warranty on this product. Some states do not allow the exclusion or limitation of incidental or consequential damages so the above limitation or exclusion may not apply to you.

©2023 DaVinci CSJ, LLC

Designed and distributed in USA by Telebrands Corp. d/b/a Bulbhead  
79 Two Bridges Road, Fairfield, NJ 07004  
Made in China.

## PACKAGE INCLUDES

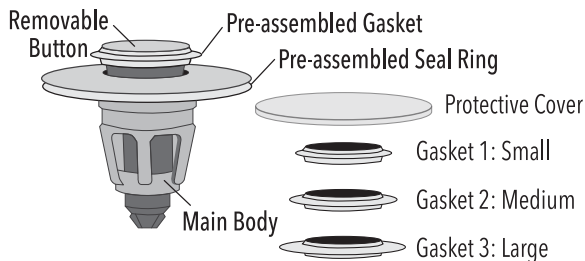
Mer-Maid™ Drain Magic™ with pre-assembled Seal Ring and Gasket, 3 loose Gaskets, Instruction Manual

## PRODUCT SPECIFICATIONS

Product Size: Diameter of widest part: 2.36 inches Height: 1.60 inches

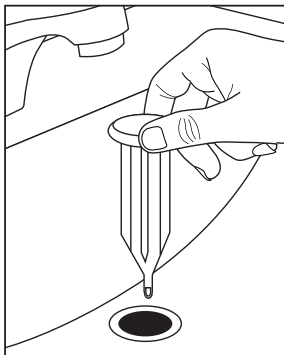
Product Materials: Gasket/Seal Ring: silicone

Main Body: brass and chrome-plated brass

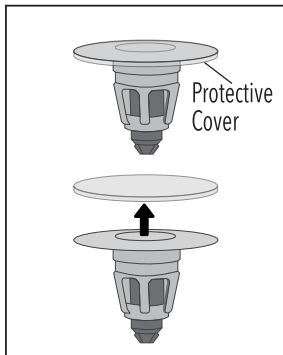


## HOW TO USE

1. Remove existing broken or unwanted sink stopper from sink drain.



2. Remove and discard Protective Cover from Mermaid™ Drain Magic™.



3. Select the gasket that appears to fit your drain best, 3 sizes included. **Note:** Seal Ring and pre-assembled Gasket must **ALWAYS** be used and **NEVER** removed.

**Seal Ring ONLY. No Gasket**  
Drain hole: 1.06"D - 1.18"D

**Gasket 1: Small**  
Drain hole: 1.18"D - 1.34"D



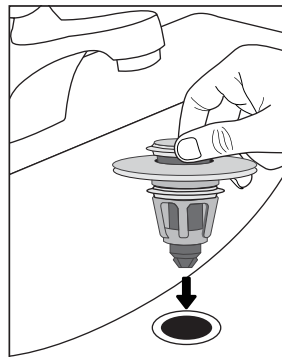
**Gasket 2: Medium**  
Drain hole: 1.34"D - 1.73"D



**Gasket 3: Large**  
Drain hole: 1.73"D - 1.96"D

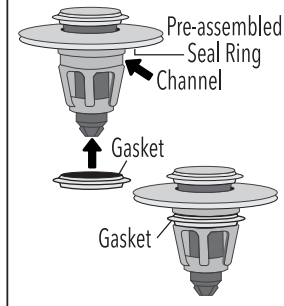


5. Insert Mer-Maid™ Drain Magic™ into sink drain. The gasket you choose should provide a tight fit to seal water in.

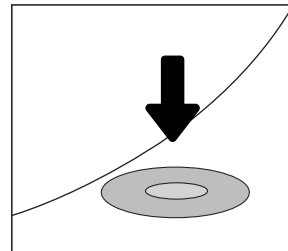


4. Place the gasket on Mer-Maid™ Drain Magic™. Make sure gasket sits flush in the channel.

**Note:** Ensure that pre-assembled Seal Ring is installed **before** the Gasket



6. Ensure outer chrome-plated circle of Mer-Maid™ Drain Magic™ is flush with the sink. To test the Mer-Maid™ Drain Magic™ push down the center button until it is flush with the outer chrome-plated circle. Fill the sink with water. If water drains while the center button is depressed, select another gasket.



Mer-Maid™ Drain Magic™ Instructions Continued on back