

*PLEASE READ THESE INSTRUCTIONS COMPLETELY BEFORE ATTEMPTING TO ASSEMBLE YOUR NEW FOUNTAIN

CONTENTS:



Flip Tower



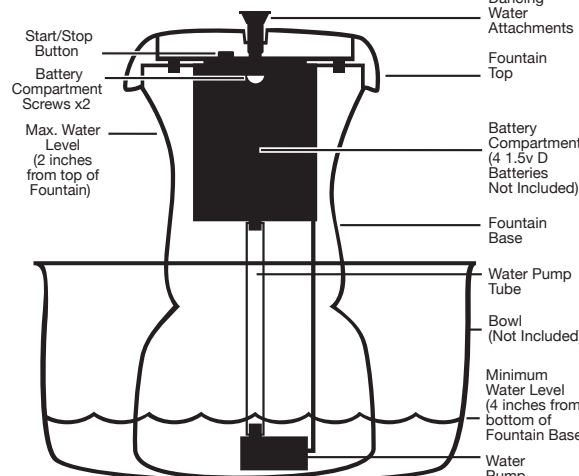
Dancing Water Attachments



Battery Compartment, Water Tube & Water Pump

Please note, images of parts are not to scale with one another.

Diagram 1a:



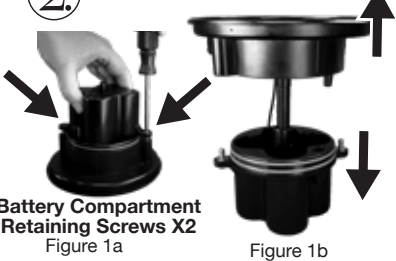
Recommended minimum bowl size is approximately 12 inches

STEP 1 INSTALLING BATTERIES:

1. Lift Fountain Top with Battery Compartment & Water Pump out of the Fountain Base (Figure 5). Disconnect the Water Tube from the Battery Compartment.
2. Unscrew (counter clockwise) the Battery Compartment Screws, slip pump cable out of cable notch, and open cover (Figure 1a, 1b). Note: Cover fits tightly
3. Insert x2 D Batteries with the (+) side facing up in Battery Compartment and x2 D Batteries with the (-) facing up in Battery Compartment (Figure 2a).
4. Reinstall the Fountain Top by aligning the locating dowel in the Battery Compartment and Fountain Top. Set the Battery Cover down onto the Battery Compartment ensuring the dowel sets into the alignment hole and that the pump wire is placed back in the cable notch. Apply pressure and tighten the Battery Cover Screws by turning clockwise. NOTE: Pressure must be applied to the Battery Compartment while tightening the screws for the threads to catch and assure the compartment is properly sealed. If needed while holding battery compartment and place upside-down on an even surface to tighten screws

- ### CHANGING BATTERIES:
1. Remove any Dancing Water Attachment, lift Battery Compartment and Water Pump out of the Fountain (Figure 5), ensure Battery Compartment and Water Pump are completely dry before opening Battery Compartment. It is important that no water enters the Battery Compartment.
 2. See Installing Batteries Section above on how to reinstall batteries and reassemble.
 3. Set the Battery Compartment and Water Pump back into the Fountain (Figure 6).

STEP 2 Assembly



Battery Compartment Retaining Screws X2
Figure 1a



Figure 1b

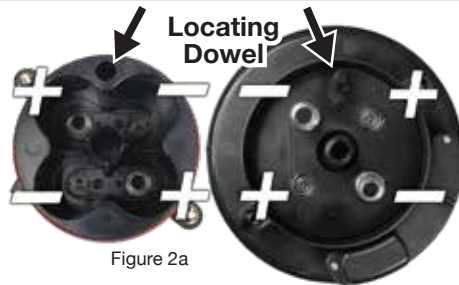


Figure 2a



Figure 2b

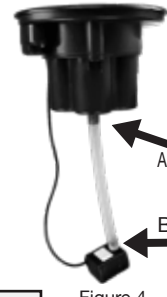


Figure 4



Figure 5

Figure 6

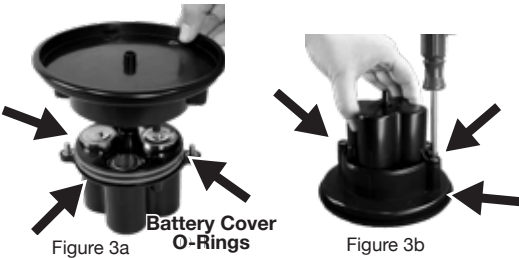


Figure 3a

Figure 3b

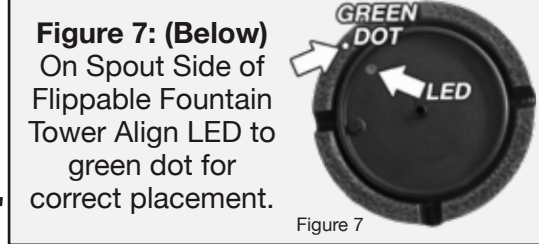


Figure 7: (Below) On Spout Side of Flippable Fountain Tower Align LED to green dot for correct placement.

Figure 7

1. Take the Fountain Top/Battery Compartment and Water Pump, connect one side of the Water Tube to the Water Pump and the other end to the bottom side of the Battery Compartment (A & B of Figure 4).
2. Find a suitable bowl and place it on a flat, level surface. Place the Fountain Base, without the Fountain Top with Battery Compartment and Water Pump, into the center of the bowl.
3. Lower the Fountain Top with Battery Compartment and Water Pump into the Fountain Base.
4. Fill bowl with water, water level should be 4 inches from the bottom of the Fountain Base. (Diagram 1a).

- ## STEP 3 Turn Fountain on and set timer:
- When the Fountain is off, set the run time from 1 to 4 hours by slowly pressing the button 1 to 4 times (Figure 7a & 7b). 3 seconds after pressing the button, the LED light will repeatedly flash the number of times the button was pressed (Figure 7a). This indicates the number of hours the Fountain will run every day. The Fountain will turn on at the same time, for the selected number of hours, daily thereafter.

Stop Fountain for one day: To stop the Fountain manually for one day, hold the button for over 2 seconds (Figure 7a & 7b). The Fountain will turn off for one day, but will still turn on at the same time, for the same number of hours selected, daily thereafter.

Reset/Change the timer: To change the run time, stop the Fountain if its running by holding the button for over 2 seconds (Figure 7a and 7b). The Fountain will stop. Once the Fountain is off, you can press the button again to set the duration (See Step 1). Fully shut off and clear timer: To fully turn off the Fountain so that it will not turn on automatically the next day, press hold the button for over 2 seconds to turn it off (Figure 7a & 7b). When the Fountain is NOT operating, simply press hold the button again for over 2 seconds, the LED will come on for 3 seconds steady to confirm daily program is off.

DANCING WATER ATTACHMENTS: (OPTIONAL): To prevent overspray there are 3 Dancing Water Attachments designed for large bowls and 1 designed for small bowls please use accordingly. When Fountain is not running, select one of the Dancing Water Attachments and attach to the outlet in the middle of the Fountain Tower (Figure 8a, 8b & 8c).

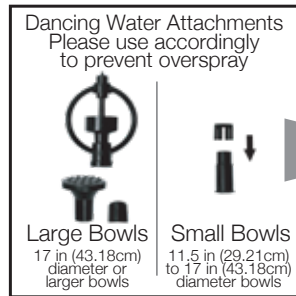


Button

Figure 7a



Figure 7b



Dancing Water Attachments Please use accordingly to prevent overspray

Large Bowls
17 in (43.18cm)
diameter or
larger bowls

Small Bowls
11.5 in (29.21cm)
to 17 in (43.18cm)
diameter bowls

Figure 8a



Figure 8b



Figure 8c

STEP 4 Troubleshooting

PRIMING THE WATER PUMP

If you find the Water Pump is running, but water is not flowing from your Fountain, you can try priming the Water Pump:
Turn off Fountain, grab both sides of the Fountain and quickly shake your Fountain for ten seconds. This is to dislodge any air bubbles that may be caught in your Water Pump. Press the button to turn your Fountain on. Water should be flowing from the top of your Fountain. If water is not flowing, press and hold button for over 2 seconds again to turn your Fountain off, and repeat the step above.

WATER PUMP CONNECTION

If your Fountain Water Pump becomes disconnected from the Water Tube inside of the Fountain or if the Water Tube gets disconnected from the Battery Compartment, go to the Assembly Section to reconnect the Water Pump.

Troubleshooting Guide

PROBLEM	SOLUTION
Water Not Flowing	Indicator light not turning on: Check batteries are installed correctly: See Installing Batteries Section.
	Indicator light not turning on: Check that batteries are new & good condition: See Installing Batteries Section.
	Pump is on but no water flow: Check water level.
	Pump is on but no water flow: Check pump is free of debris, kinks or obstructions. See Care & Maint. Section.
Low Water Flow	Pump is on but no water flow: Check tube is connected properly. See Installing Batteries Section.
	Indicator light on: Check that batteries are new and good condition. See Installing Batteries Section.
	Pump is on but low water flow: Check pump is free of debris, kinks or obstructions. See Care & Maint. Section.
Loud Sound	Pump is on but low water flow: Check water level. Air in pump: See Priming The Water Pump Section.
	Loud sound and weak flow: Air in pump: See Priming The Water Pump Section.
Suddenly Stops	Loud sound and weak flow: Check pump is free of debris, kinks or obstructions. See Care & Maint. Section.
	Pump suddenly stops: Check pump is free of debris, kinks or obstructions. See Care & Maintenance Section.

STEP 5 Care & Maintenance

CLEANING YOUR FOUNTAIN

In order to keep your Fountain in tip-top shape and for a prolonged life, it is best if your Fountain and the bowl or water container that the Fountain is placed in are cleaned periodically. To clean your fountain, drain of all water and disassemble. Use a mild soap and a soft cloth to clean the parts of your Fountain.

COLD STORAGE

Turn power off, remove from container, clean and dry the Fountain of all water. Remove the batteries for long term storage and bring it indoors. (Now is a great time to clean the pump to remove any debris that may have accumulated throughout the year).

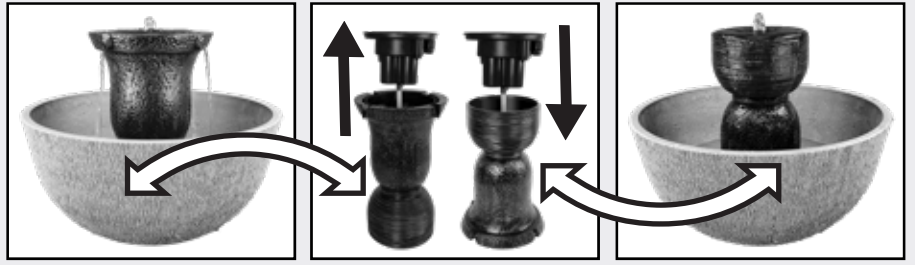
CLEANING THE WATER PUMP'S PARTS

The impeller inside of the Water Pump is what pushes water up through your Fountain, allowing you to enjoy the soothing sounds and wonderful sights of your Fountain. After long periods of usage, this part will need to be cleaned to make sure your Fountain runs optimally.

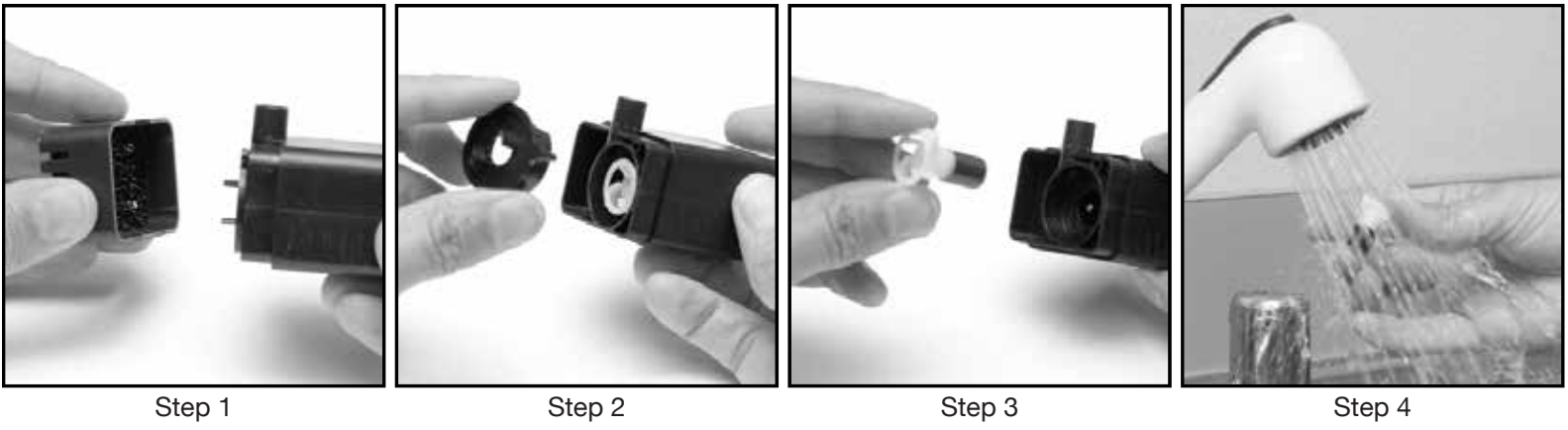
- Step 1: Remove the front panel of the Water Pump by grabbing the sides of the front panel and pulling it off the unit.
- Step 2: Remove the impeller chamber cover. This is tightly fitted but will come off.
- Step 3: Remove the impeller from its chamber.
- Step 4: Rinse the impeller until all debris has been removed.
- Step 5: Re assemble in reverse order.

Need Help?
Call us for assistance at:
+1 (619) 449-2392
or you can email us at:
customer@berninifountains.com
Our Customer Care Department is available:
Monday - Friday
8:30am to 4:00pm PST
11:30am - 7:00pm EST

FLIPPING THE FLIPPABLE FOUNTAIN:



Simply remove the Battery Compartment, Water Tube & Water Pump Assembly flip the Flip Tower, set the Battery Compartment, Water Tube & Water Pump Assembly back into the Flip Tower and you have a new look for your Flippable Fountain, One Fountain two unique looks.



IMPORTANT BATTERY SAFETY INSTRUCTIONS:

PROPOSITION 65 WARNING: This product can expose you to chemicals including lead and lead compounds which are known to the State of California to cause cancer and birth defects or other reproductive harm. For more information to www.P65Warnings.ca.gov.
WARNING: When using electric devices, basic safety precautions should always be followed to reduce the risk of fire, electric shock and personal injury, including the following:
WARNING: 1. Do not incinerate the battery even if it is severely damaged or is completely worn out. The battery can explode in a fire. Check with municipal codes in your area for possible special disposal instructions.
2. If liquid leaks from the battery cell, discontinue use immediately and dispose of properly.
3. Use only 4-1.5V D Cell Batteries.
4. Do not attempt to disassemble, remodel or destroy the batteries, as it may cause battery leakage, fire, or bursting; and could also create sulfuric acid spills from the battery resulting in possible burns to person and damage to the immediate environment.
5. Never dispose of batteries in the garbage. Disposal of batteries in the garbage is unlawful under state and federal environmental laws and regulations. Always take used batteries to your local battery-recycling center.



Assembly Of Battery Compartment Housing and Battery Cover:

1. Place Battery Cover on Battery Compartment Housing. Turn over assembled Battery unit and place on a flat, level surface. Using a Phillips screwdriver (not included) first, tighten left screw down firmly.
2. After tightening the left screw, you will notice a small gap between the Battery Cover and the Battery Compartment Housing.
3. Using a Phillips screwdriver (not included) tighten the right screw down firmly.
4. After both screws have been tightened, you may notice a small gap between the Battery Compartment Housing and the Battery Cover.
5. Press down firmly on the bottom of the Battery Compartment Housing to help tighten the gap.
6. Using a Phillips screwdriver re-tighten the screws (left screw first, right screw second) to further tighten the gap between the Battery Cover and the Battery Housing Compartment.

LIMITED ONE YEAR WARRANTY

This warranty gives you specific legal rights and you may also have other rights which vary from state to state. This product has a one year limited warranty on all materials and workmanship. Bernini® warrants the original purchaser of this product that the product will be free from manufacturing defects in workmanship and material for a period of one (1) year from the date of original purchase. If within one (1) year this product fails due to defect in material or workmanship, Bernini® will repair, replace or supply any defective part at their discretion. The purchaser must contact Bernini® and provide a description of the defective part, including digital pictures if requested, with the original purchase documentation as validation of warranty coverage. This warranty does not cover or apply to: (a) damage to the product due to misuse, mishandling, or abuse, (b) products not used in accordance with instructions, (c) product not assembled or installed according to instructions, and (d) normal wear and tear. Call us for assistance at +1 (619) 449-2392 or you can email us at customer@berninifountains.com or mail us at: 9545 Pathway Street, Santee, CA 92071, Our Customer Care Department is available: Monday - Friday 8:30am to 4:00pm PST / 11:30am - 7:00pm EST

Please read first before returning:

Please call us for assistance at 1-619-449-2392 or email us at customer@berninifountains.com. Our Customer Care Department is available: Monday - Friday 8:30am to 4:00pm PST, 11:30am to 7:00pm EST. If you have any questions regarding assembly, parts, or operation, please visit our website at www.berninifountains.com. You will find instructional videos on how to assemble and operate your fountain and keeps you up to date on our newest products. This product comes with a one year limited warranty against materials and workmanship.