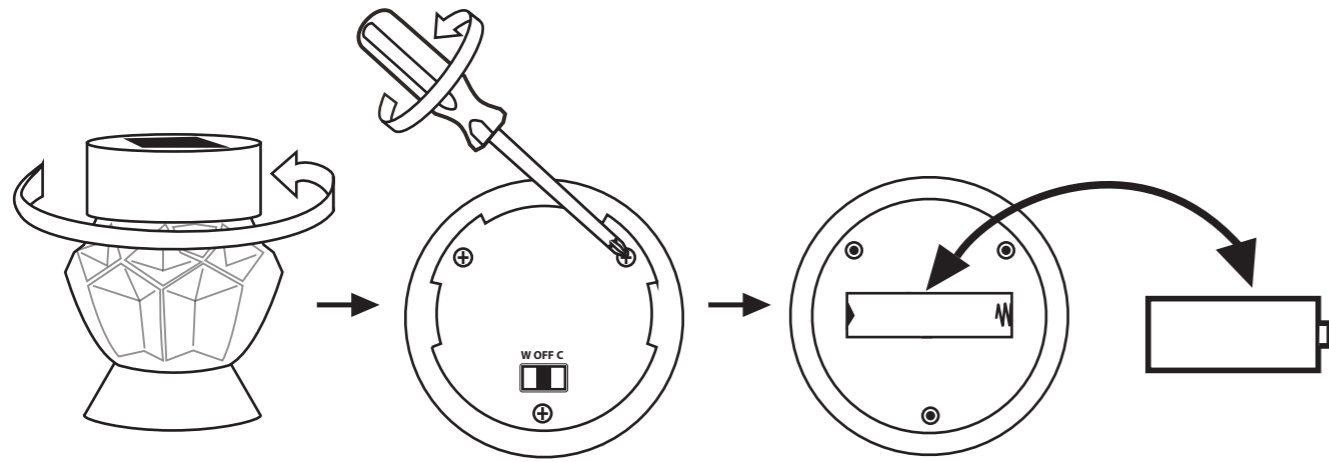




CHANGE BATTERY

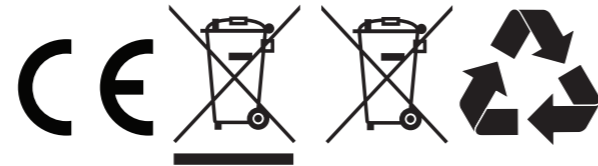


BATTERY SPECIFICATION - BATTERIE SPÉCIFICATION - BATTERIE SPEZIFIKATION

1 x AAA 1.2v Replaceable and rechargeable Ni-MH battery included.

BATTERY DISPOSAL

Dispose of batteries according to local regulations.



PROBLEM SOLVING

1. Check the solar panel is positioned correctly.
2. Check the battery and boost charge as described.
3. If problems persist contact customer services.

1 YEAR WARRANTY

The 1 year warranty covers any manufacturing defects on the product and any parts included with the product on purchase. The warranty covers any part of the product that can be shown to have a manufacturing defect and that is not working to the stated specifications. The warranty does not apply to accidental damage or any fault derived from failure to follow the manufacturer's instructions. If you find any fault, please refer to the contact details below. The product, or part of the product, will be replaced on verification of the fault. This warranty does not affect your statutory rights, which may vary from state to state.

USA Email: ussupport@smartsolar.com Tel: +1 813 343 5775
 UK Mainland Enquiries Only Email: uksupport@smartsolar.com Tel: +44 (0)8448 009163

www.sgpk.com

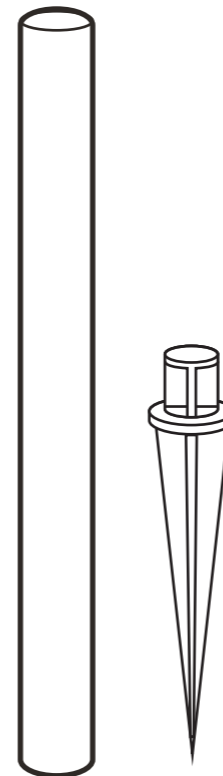
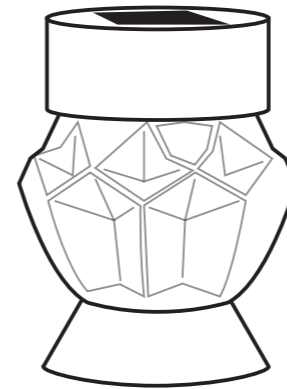
Smart Garden Products Ltd, 2 Pentagon South, Barton Lane, Abingdon, Oxfordshire, OX14 3PZ

SOLAR POWERED CRYSTAL GLASS STAKE LIGHTS

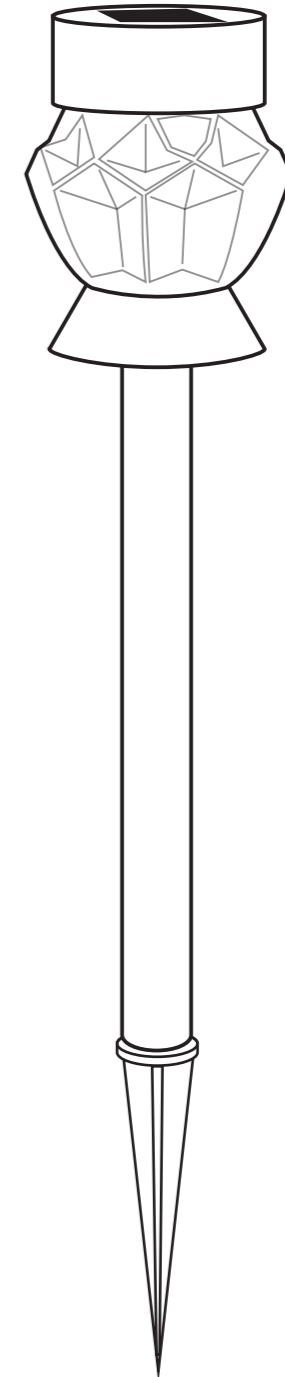
INTRODUCTION

Solar lights work by using power generated by the solar panel to charge internal batteries. These batteries are then used to power the light. When switched on the lights automatically illuminate at night by using a light sensor. The duration of illumination will depend on the amount of sunlight and therefore charge received by the batteries.

CONTENTS



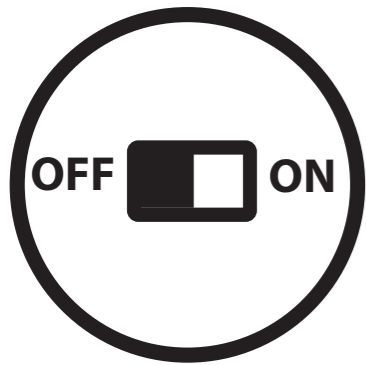
x8



This is not a toy.
Keep away from
children and pets.

Design may vary.

FUNCTION



(ON) White
(OFF) Off



1 white LED.



Outdoor use.

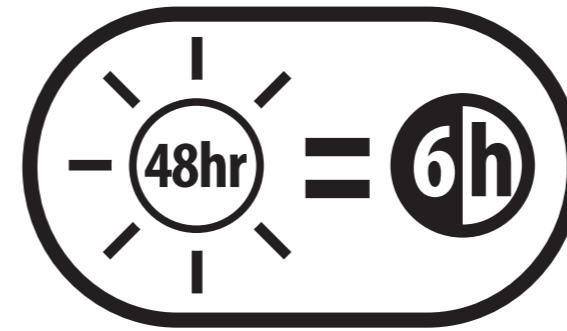


No mains required.



Rechargeable batteries become less efficient with repeated charge-discharge cycles and the battery capacity reduces. If battery becomes less efficient try boost charging it by leaving in the off position for 3 to 5 sunny days to allow the maximum charge to the battery.

FIRST USE

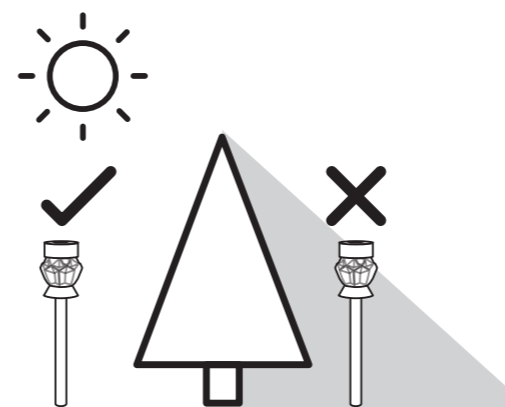


Leave switch in "OFF" position for 2 sunny days.

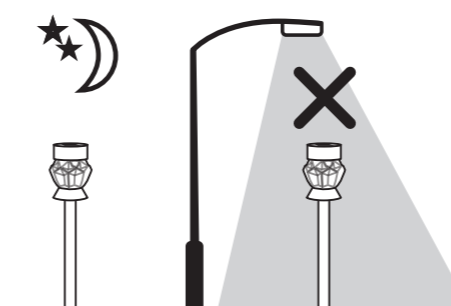
PERFORMANCE

	Spring	Summer	Autumn	Winter
Light run time	2-4h	4-6h	2-4h	0-2h

POSITION



Position the solar panel to receive the maximum amount of sunlight.



Do not position under bright light as this will prevent the light switching on at night.