

Installation Instructions

NetBright® UltraBright Spotlight

MBN391

Thank you for purchasing the Mr Beams® NetBright® UltraBright Spotlight. We are committed to eliminating darkness using the latest in Light-Emitting Diodes (LEDs). LEDs are the most efficient and durable light sources available. We are certain that your light will contribute to a safer environment and provide light where you need it at a very reasonable cost.

What is included per light:

- 1 Wireless Spotlight
- 3 Screws
- 3 Anchors

What you need to install:

- 1 Small Screwdriver
- 4 D-Cell Alkaline Batteries

Spotlight Features:

Motion/Light Sensor: Light instantly turns on when it detects motion from up to 25 feet away. The light sensor conserves battery life by preventing the light from activating in daylight.

Auto Shut-off: Light shuts off automatically after 20 seconds if no motion is detected.

Fully Adjustable: Light can be rotated 360° as well as 170° up and down.

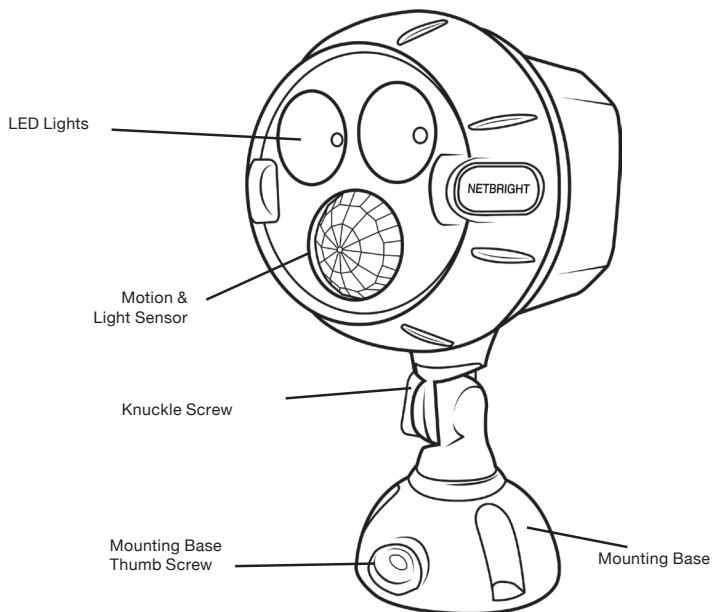
Bright LEDs: 450 lumens cover up to 675 sq. ft.

Durable, Weather Resistant: Tight seals and UV resistant material allow the light to work in all weather conditions.

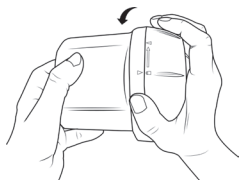
Networking: Spotlights will activate simultaneously when any spotlight within the network detects motion. They will deactivate simultaneously if no motion is detected in the group.

Tips:

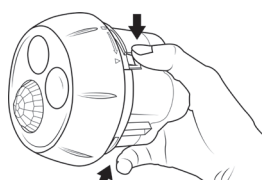
- Use only new alkaline D-Cell batteries with 1.5V rating.
- Do not mix old and new batteries. If batteries are not new, it may cause the light to malfunction.
- Install batteries with polarity in correct position.
- Light may activate when batteries are inserted. Simply take light into a dark room, allow batteries to settle up to ten minutes, then test activation.
- **If your light will not turn off, it means that it is time to replace the batteries.**



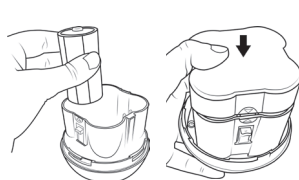
NOTE: Light sensor only allows light to activate in darkness. We recommend you test in a dark room or closet.



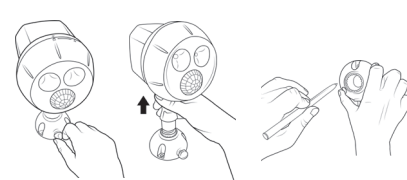
1. Remove front cover of spotlight by rotating counterclockwise as shown above. Pull face out from cup to reveal battery holder.



2. Separate two parts by squeezing tabs and pulling apart.



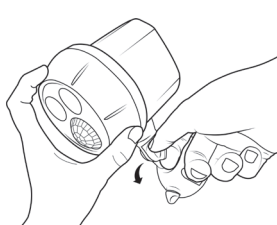
3. Insert 4 D-Cell batteries into spotlight. Attach holder by aligning the grooves on the side and match white arrows, snapping both tabs in the holder.



4. Remove mounting base by turning thumb screw counterclockwise. Pull mounting base off stem of light.
5. Drive three screws into three holes to mount the mounting base. For drywall, drill pilot holes first and insert anchors.



6. Insert spotlight back into mounting base positioned in the desired direction. Tighten mounting base thumb screw.



7. To pivot spotlight up and down, loosen knuckle screw in the joint of the Spotlight stem and adjust Spotlight head to desired direction. Tighten knuckle screw.

Setting up Lights to a Network



After inserting the batteries, choose a group or channel for your spotlights with the dipswitches next to the battery compartment. Ensure all units are on the same channel by matching the dipswitch positions.

* Spotlights set to the same group will activate together when they are within 150 ft of each other.

Tips:

- 1. You may need to rotate the battery compartment to reveal the dipswitches.
- 2. Use a pencil or a small screwdriver to adjust the switch positions.

Battery Caution:

- 1) Do not mix old and new batteries
- 2) Do not mix Alkaline, Standard (Carbon-Zinc) or Rechargeable (Nickel Cadmium) or (Nickel Metal Hydride) batteries
- 3) Do not dispose of batteries in fire
- 4) Batteries should be recycled or disposed of as per state and local guidelines

1 Year Limited Warranty Against Defects: All Mr Beams® products are guaranteed against defects in workmanship and materials for 1 year from purchase. Warranties implied by law are subject to the same time period limitation. Some states do not allow limitations on how long an implied warranty lasts, so this time limitation may not apply to you. If the product fails due to a manufacturing defect during normal use, send the product and the dated sales receipt to the address below. **Not Covered** – Batteries are not covered by this warranty. Repair service, adjustment and calibration due to misuse, abuse or negligence are not covered by this warranty. Unauthorized service or modification to this product or of any furnished components will void this warranty in its entirety. This warranty does not include reimbursement for inconvenience, installation, set-up time, loss of use, postage, unauthorized service, or other products used in conjunction with, but are not supplied by, Wireless Environment. This warranty gives you specific legal rights, and you may also have other rights which vary from state to state.

WARNING: This product contains chemicals known to the State of California to cause cancer and birth defects or other reproductive harm.

This device complies with part 15 of the FCC rules. Operation is subject to the following two conditions:

1. This device may not cause harmful interference
2. This device must accept any interference received including interference that may cause undesired operation.

Mr Beams®
(877) 298-9082
ATTN: PRODUCT REGISTRATION
600 BETA DRIVE, UNIT 100 MAYFIELD VILLAGE, OH 44143