
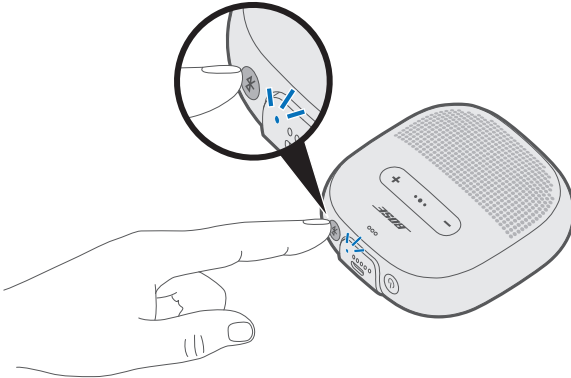


## Connect using the *Bluetooth* menu on your mobile device

1. With your speaker powered on, press and hold the *Bluetooth* button  until you hear “Ready to connect,” and the *Bluetooth* indicator blinks blue.



2. On your device, enable the *Bluetooth* feature.

**Tip:** The *Bluetooth* feature is usually found in the Settings menu.

3. Select your speaker from the device list.



Once connected, you hear “Connected to <mobile device name>,” and the *Bluetooth* indicator glows solid white.

**Tip:** Look for the name you entered for your speaker in the Bose® Connect app.

### Disconnect a mobile device

---

Disable the *Bluetooth* feature on your device.


**Tip:** You can also disconnect your device using the Bose® Connect app.

### Reconnect a mobile device

---

When powered on, the speaker tries to reconnect with the two most recently-connected devices.

**Note:** The devices must be within range (30 ft. or 9 m) and powered on.

You can pair additional devices to your speaker. These *Bluetooth* connections are controlled with the *Bluetooth* button . Voice prompts guide you through controlling multiple connections. Before connecting an additional mobile device, make sure this feature is enabled.

**Tip:** You can also easily manage multiple connected devices using the Bose® Connect app.

## Connect an additional mobile device

---

You can store up to eight paired devices in the speaker pairing list, and your speaker can be actively connected to two devices at a time.

To connect an additional device, download the Bose® Connect app (see page 22) or use the *Bluetooth* menu on your mobile device (see page 23).

**Note:** You can play audio from only one device at a time.

## Identify connected mobile devices

---

Press  to hear which devices are currently connected.



## Switch between two connected mobile devices

---

1. Pause audio on your first device.
2. Play audio on your second device.


### Reconnect a previously connected mobile device

---

1. Press the *Bluetooth* button  to hear which device is connected.
2. Press  again within three seconds to connect to the next device in the speaker pairing list.
3. Repeat until you hear the correct device name.
4. Play audio on the connected device.

### Clear the speaker pairing list

---

1. Press and hold the *Bluetooth* button  for 10 seconds until you hear “*Bluetooth* device list cleared,” and the *Bluetooth* indicator blinks blue.
2. Delete your speaker from the *Bluetooth* list on your mobile device.  
All devices are cleared, and the speaker is ready to connect.