



Volumizer User Guide

Heated Styling Brush
Model No. 76600

IMPORTANT SAFETY INSTRUCTIONS

READ ALL INSTRUCTIONS BEFORE USING
When using electrical appliances, basic safety precautions should always be followed, including the following:



DANGER

KEEP AWAY FROM WATER

Electricity and water are a dangerous combination and can cause death by electric shock. Do not allow electrical cords to come into contact with water or other liquids.

ELECTRICAL APPLIANCES ARE ELECTRICALLY LIVE WHEN PLUGGED IN, EVEN IF TURNED OFF.

To reduce the risk of death by electric shock:

1. Always unplug the appliance immediately after using.
2. Do not use while bathing.
3. Do not place or store appliance where it can fall or be pulled into a tub or sink.
4. Do not place in or drop into water or other liquid.
5. If appliance falls into water, unplug it immediately. Do not reach into the water.

IMPORTANT SAFETY INSTRUCTIONS



WARNING

To reduce the risk of burns, electrocution, fire or injury:

1. Make sure to remove plug from outlet after use.
2. Never leave appliance unattended when plugged in.
3. Do not use if plug is loose in the outlet.
4. Close supervision is necessary when this appliance is used by, on, or near children or individuals with certain disabilities.
5. Never operate this appliance if it has a damaged cord or plug, if it is not working properly, or if it has been dropped, damaged, or dropped into water. Return the appliance to a service center for examination and repair.
6. Do not use outdoors or operate where aerosol (spray) products are being used or where oxygen is being administered.
7. Keep the cord away from heated surfaces. Do not wrap the cord around the appliance.
8. Do not use an extension cord with this appliance.
9. This styling device is hot when in use. Do not let eyes and bare skin touch the heated surfaces.
10. Use this appliance only for its intended use as described in this manual. Do not use attachments not recommended by the manufacturer.
11. Never use while sleeping.
12. Never drop or insert any object into any opening or hose.
13. Before plugging in, read the information about auto world voltage contained in the instruction section of this manual.

IMPORTANT SAFETY INSTRUCTIONS



WARNING

14. Attachments may be hot during use. Allow them to cool before handling.
15. Do not place appliance on any surface while it is operating.
16. Do not operate with a voltage converter.

This appliance is intended for household use. Use on Alternate Current (60 Hertz) only. This appliance has a polarized plug (one blade is wider than the other). As a safety feature, this plug will fit in a polarized outlet only one way. If the plug does not fit fully in the outlet, reverse the plug. If it still does not fit, contact a qualified electrician. Do not attempt to defeat this safety feature.



Do not use the appliance near a bath tub, washbasin or other vessel filled with water. Never place the appliance in water or any other liquid.

SAVE THESE INSTRUCTIONS

OPERATING INSTRUCTIONS

T3 Volumizer



WARNING

USING THE AUTO WORLD VOLTAGE APPLIANCE

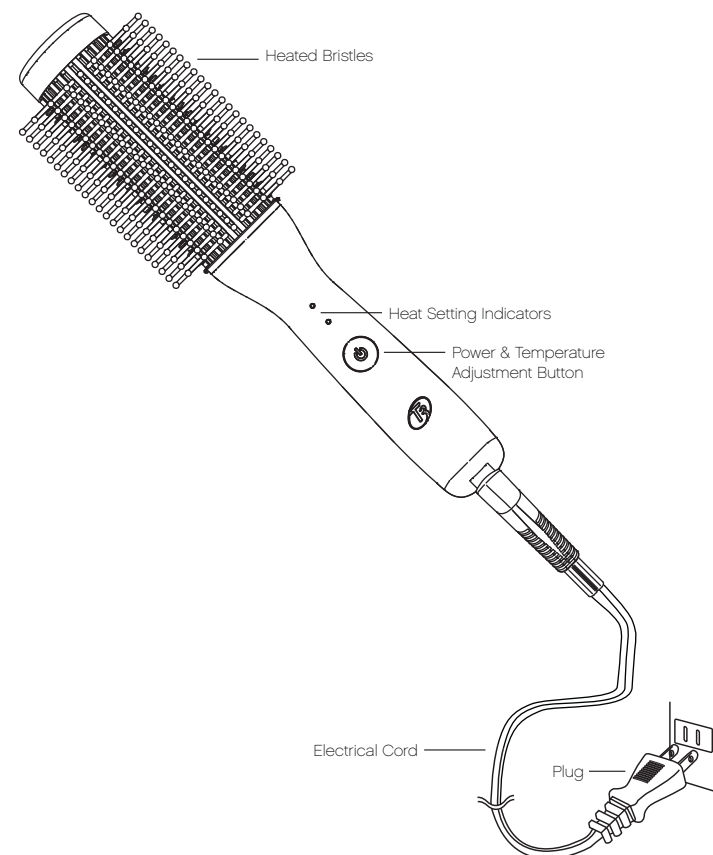
This appliance can automatically change the working voltage, not combined with a voltage selector switch. Confirm the voltage available at each overseas location before using the appliance. For connection to a 240-volt supply, use an attachment plug adapter of the proper configuration for the power supply receptacle.

AUTO SHUT OFF

This brush will automatically turn itself off after 1 hour of non-use. To turn the unit back on, simply press the power button.

OPERATING INSTRUCTIONS

T3 Volumizer



BEFORE YOU BEGIN

T3 Volumizer

The Volumizer is a unique tool that can be used for styling on Day 1 and reinvigorating your look on Days 2 & 3.

USE THE VOLUMIZER TO

- Create root lift
- Soften and smooth hair
- Build body and movement
- Enhance shine
- Revitalize 2nd and 3rd day hair

REMEMBER

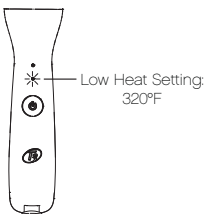
- Work with sections at least 3-4" wide to enhance body
- Use slow and steady brush strokes to ensure heat is distributed evenly
- Keep the brush moving so as not to create unintended bends in your style
- Repeat your brush strokes to create desired fullness

GETTING STARTED

T3 Volumizer

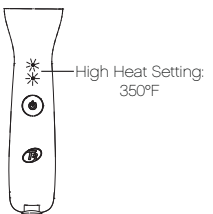
1

Press the power button to turn the brush on. It will automatically go to the Low heat setting. When the flashing light turns solid, the brush is ready to use.



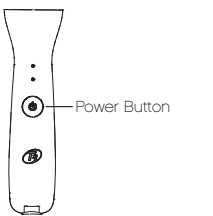
2

To select the High heat setting, press the button again. Both lights will begin to flash, and then turn solid when the brush is ready to use.



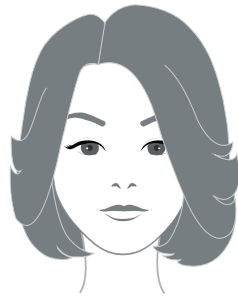
3

To turn the brush off, press and hold the power button until all lights turn off.



CREATING VOLUME

T3 Volumizer



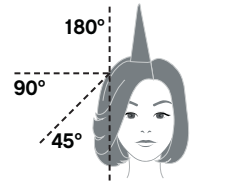
1 Divide detangled, dry hair into 3-4 inch sections.



2 Place brush underneath each section and slowly brush from roots to ends using a C motion. For a flipped under finish, slowly rotate the brush inwards as you brush through the section.

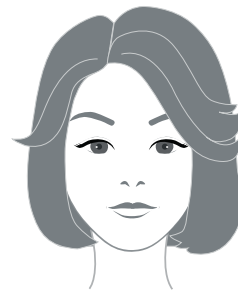


Expert Tip:
Lift your hair 90° or more from the base to create more volume.



SHAPING BANGS

T3 Volumizer



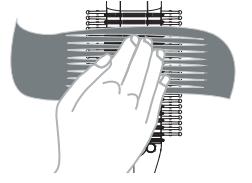
1 Position brush on top of bangs.



2 Slowly draw the brush up and to the side forming the intended shape, using your opposite hand to guide the wave as you brush. Repeat as needed for desired fullness.



Expert Tip:
Use your hand to curve the hair over the back of the brush head and allow the grooves to guide the hair into place.

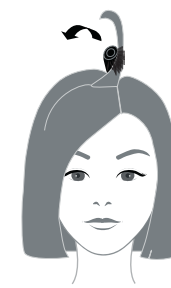


DAY 2 TOUCHUP TIPS

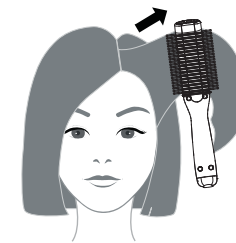
T3 Volumizer

LIFT YOUR LOOK

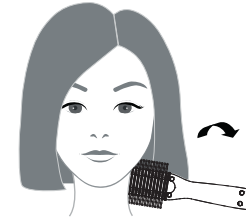
When your style begins to fall flat, add volume by lifting and brushing your hair from roots to ends using a C motion.



On the sides: brush your hair back and away from your face.



From underneath, brush up from the nape of your neck.

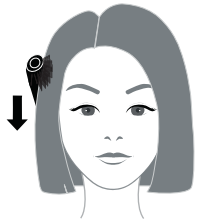


DAY 2 TOUCHUP TIPS

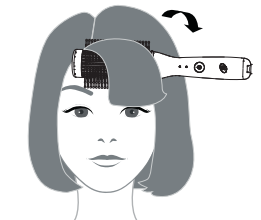
T3 Volumizer

RETRACE YOUR STYLE

Restore straight locks that have started to curl by gradually applying a bit of tension while brushing through to ends.



Revive bangs that have fallen flat by drawing the brush forward in a C motion.



NOTE: If your hair is layered, work with each layer separately for the best definition.

For advanced styling techniques, visit [youtube.com/T3Micro](https://www.youtube.com/T3Micro).

MAINTENANCE INSTRUCTIONS

T3 Volumizer

1. Your appliance is virtually maintenance free. It contains no user serviceable parts, and no lubrication is needed.
2. Keep heated surfaces clean and free of dust, dirt & hairspray.
3. If cleaning becomes necessary, disconnect the appliance from the power source and let it cool. Wipe the exterior with a damp cloth.
4. If any malfunction occurs, unplug the appliance, allow it to cool and return it to a service center to repair.
5. Never wrap the cord around the appliance since this will cause the cord to wear prematurely and break. If the cord becomes twisted, untwist it prior to use.
6. Handle cord carefully for longer life and do not put any stress on the cord where it enters the handle. Avoid jerking, twisting or straining especially at the plug connections. It could cause the cord to fray and possibly break.
7. When not in use, your styling brush should be disconnected and stored in a safe, dry location, out of reach of children. Do not wrap the cord around the styling brush. Allow the cord to hang or lie loose and straight at the point of entry into the styling brush.
8. Do not attempt to repair the appliance yourself.

T3 LIMITED WARRANTY TERMS & CONDITIONS

T3 Micro will repair or replace (at our option) T3 products for twenty-four (24) months from the date of purchase if they are defective in workmanship or materials. This limited warranty does not cover (1) damage due to misuse or abuse, such as incorrect voltage supply, dropping, or failure to follow enclosed instructions or (2) tampering, such as repair or attempted repair. To obtain service under this warranty, please call 1.888.340.8880 or email us at info@T3micro.com to obtain a Return Authorization Number as well as explicit instructions on how to return the defective product. You will be required to return the defective product with a proof of purchase, payment in the amount of \$9.95 (brushes/irons) or \$14.95 (dryers and showerheads) to cover shipping and handling, and a brief description of the product's deficiencies. Please clearly mark the Return Authorization Number on the outer packaging when sending us the defective item.

THIS LIMITED WARRANTY IS ONLY VALID IF THE PRODUCT IS PURCHASED FROM AN AUTHORIZED SELLER OF T3 GOODS AND IF THE ORIGINAL SERIAL NUMBER ON THE PRODUCT HAS NOT BEEN REMOVED OR OTHERWISE TAMPERED WITH.

Any implied warranties, obligations, or liabilities, including but not limited to the implied warranty of merchantability and fitness for a particular purpose, shall be limited in duration to the 24 month duration of this written limited warranty. Some states do not allow a limitation on how long an implied warranty lasts, so the above limitation may not apply to you.

IN NO EVENT SHALL T3 BE LIABLE FOR ANY SPECIAL, INCIDENTAL, OR CONSEQUENTIAL DAMAGES FOR BREACH OF THIS OR ANY OTHER WARRANTY, EXPRESS OR IMPLIED.

Visit www.T3micro.com/register to complete your warranty registration.

Become a fan and discover
The Science of Fabulous

Receive information on new product releases, stylist tips and tricks, and other news from the behind the scenes world of T3.

[FACEBOOK.COM/T3MICRO](https://www.facebook.com/T3Micro)

[YOUTUBE.COM/T3MICRO](https://www.youtube.com/T3Micro)

[WWW.T3MICRO.COM](http://www.T3Micro.com)

MODEL NO.
76600

SPECIFICATIONS

Operating Voltage: 100-240V
Power Consumption: 48W

T3 Micro
Gardena, CA USA
Made in China

[WWW.T3MICRO.COM](http://www.T3Micro.com)



WARNING

Do not use the appliance near a bath tub, washbasin or other vessel filled with water. Never place the appliance in water or any other liquid.



UG-76600r1