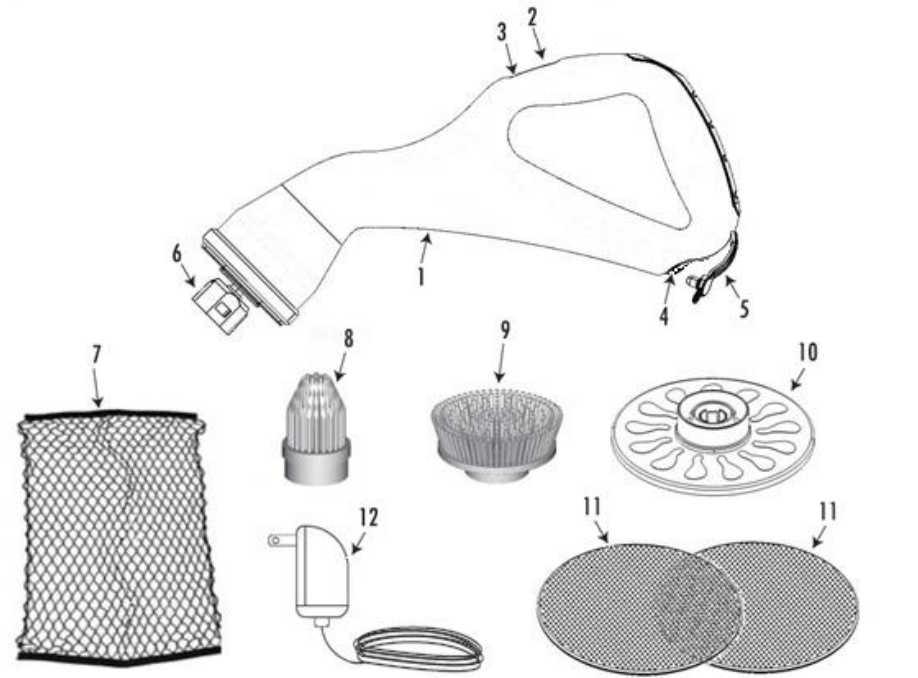


PRODUCT INFORMATION



- | | |
|-----------------------------|---------------------------------------|
| 1. Compact Power Scrubber | 7. Mesh Storage Bag |
| 2. ON/OFF Switch | 8. Pointed Corner Brush |
| 3. Charging Indicator Light | 9. Large Diameter Flat Brush |
| 4. Charging Port | 10. Mounting Disc for Microfiber Pads |
| 5. Charging Port Cover | 11. Microfiber Pads |
| 6. Brush Head Connector | 12. Charging Adapter |

BRUSH HEAD ASSEMBLY

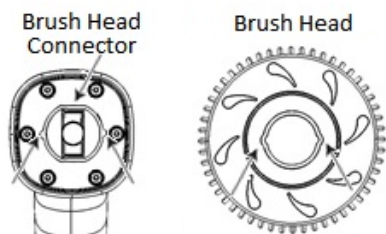
Attaching Brush Head

To attach cleaning head, hold the scrubber firmly with one hand and then press the brush head onto Brush Head Connector until secure.

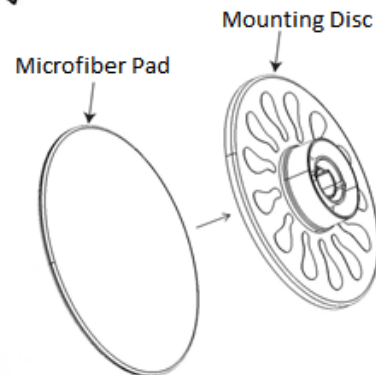
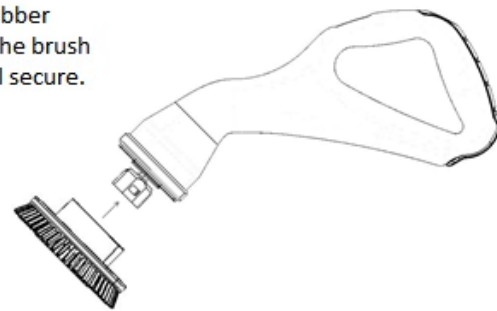
Removing Brush Head

To remove Brush Head, hold scrubber firmly and pull Brush Head to remove. This may require extra force in some cases.

You can also slip a butter knife between scrubber head and Brush Head and pry forward to remove.



To attach Brush Head to scrubber, align the grooved areas on the Brush Head with the ribbed areas on the Brush Head Connector as pointed out above.

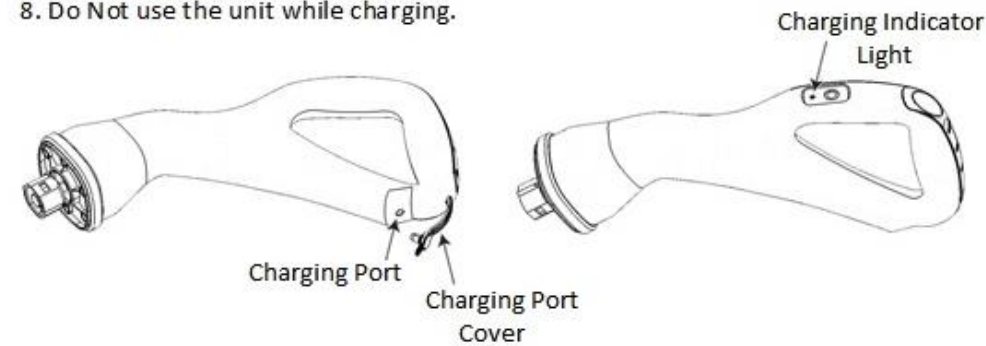


Attaching Microfiber Pad to Disc
Center Pad on Disc then press together. The white side of the Pad attaches to the Disc and is held in place with velcro.

CHARGING

WARNING: To avoid the risk of suffocation, keep all plastic bags away from children

1. Open rubber Charging Cover.
2. Insert Charging Adapter into Charging Port on bottom of unit. Next, plug Adapter into wall outlet.
3. The Charging Indicator Light on top of the handle should light up and start to blink slowly. This indicates the unit is charging.
4. The unit is fully charged when the light stops blinking.
5. If the light does not come on when plugged in, check wall outlet by plugging a lamp into outlet and turning it on. See if outlet is controlled by a wall switch.
6. After charging, close the Charging Cover.
7. You cannot overcharge the unit by using the charger provided.
8. Do Not use the unit while charging.



OPERATION

- Always use rubber gloves and proper eye wear to avoid contact from splatter of detergents with skin and eyes while head is spinning.
- To avoid splatter from brush, turn scrubber off while the attachment is still in contact with the surface.
- The scrubber has been designed for easy, powerful cleaning. If you are uncertain about its use on a surface, test on a small, inconspicuous area before using on a larger area.
- Always follow the surface manufacturer's recommendations when using a chemical cleaner such as sprays, foams, rub-on gels, liquid detergents or bleach solutions.
- Do not use with abrasive cleaners on any surface.

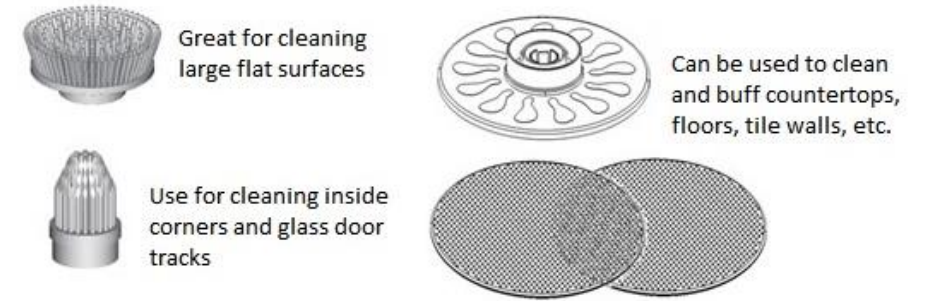
Wet the area to be cleaned and apply a cleaning agent to the surface. Alternatively, you can dunk the brush head in a soap and water mixture and then move the brush into contact with the surface to be cleaned.

CAUTION: Before turning on the brush, be sure proper eye wear and gloves are worn.

- Press the On/Off switch to turn the unit on while brush is in contact with surface and the brush head will begin its rotating scrubbing action. Hold the tool by the handle with one or both hands then apply light pressure to the surface and let the brush head do the work. Do not press too hard.
- After scrubbing, rinse and/or wipe clean.

After Use:

After use, turn the ON/OFF switch to the OFF position by pressing once. Clean the machine as directed.



MAIN UNIT CLEANING

Main Unit Cleaning

- Use a soft cloth to clean the handle and surface of the scrubber.
- Do not clean the machine by immersing in water or with shower directly to the whole unit as this will risk damage to components.
- Do not clean with alcohol or petro to avoid damaging the surface.

Brush Head and Microfiber Mop Head Cleaning

- To clean Brush heads, rinse with water or a detergent/water mixture then rinse clean.
- To clean the Microfiber Mop Head, remove from Mounting Disc and put in clothes washing machine then let air dry.

Frequently Asked Questions

Q: Are replacement brushes and spare parts available?

A: Yes, contact the seller where the unit was purchased or call us directly at 877-729-8827.

You may also check our website at www.riteworxinnovations.com or email us at sales@riteworxinnovations.com

Q: How long will the charge last during use?

A: Run time varies depending on the type of cleaning head used and the amount of pressure applied.

Q: Can I use the scrubber on fiberglass or other plastic surfaces?

A: For all surfaces, we recommend doing a small test spot in an inconspicuous or non-visible area first.

Q: What type of cleaner can I use?

A: There are many types of cleaners depending on the surface and type of buildup you wish to clean. The scrubber can be used with most types of household cleaners. Do not use with abrasive cleaners on any surface.

Q: What other uses are there for the scrubber?

A: The scrubber can be used in the bathroom, Kitchen, tile floors, baseboards, auto wheel rims and many other cleaning jobs. We recommend purchasing additional brushes so you can keep them separate.

Q: Can I get the scrubber wet?

A: The scrubber is water resistant so it "cannot" be submerged. Do not place unit under running water. Only the brush head can be dipped in water while cleaning.

SAFETY INSTRUCTIONS

Prior to first operation, read this manual carefully and keep it for future use.

⚠ CAUTION: When using electrical appliances, basic safety precautions should always be followed, including the following:

- This product is not a toy. Close supervision is required when any appliance is used by or near children. Store out of reach of children.
- If the charger cord is damaged, it must be replaced by the manufacturer or its service agent or similarly qualified person in order to avoid hazard.
- To protect against the risk of electrical shock, do not put the battery charger in water or other liquid. Do not charge battery if it is wet or shows signs of corrosion.
- Do not incinerate the battery; it can explode in a fire.
- Do not use an extension cord. Plug the charger directly into a standard 120V power outlet.
- Do not attempt to use this charger with any other product.
- Do not attempt to charge this product with any other charger.
- Do not charge the unit outdoors.
- Do not use the charger in wet or damp conditions. It is intended for indoor use only. Do not use charger near sinks or tubs. Do not immerse in water.
- The charger should be placed away from sinks or hot surfaces.
- Do not operate charger if it has received a sharp blow, been dropped, or otherwise damaged in any way. Do not disassemble the charger for any reason.
- For best results, do not charge battery when it or the air temperature is below 40°F (5°C) or above 105°F (40°C).
- Unplug the charger when not in use and before cleaning.
- Do not abuse the cord.
- Do not operate in the presence of explosives and/or other flammable fumes or liquids.
- If abnormal noise, smell, smoke or any other failure or breakage is found during the operation, unplug it.
- Do not store or use the appliance close to high temperatures.
- Always use proper eye protection when using the Power Scrubber with irritating substances. Rubber gloves are also recommended.
- When changing accessories, make sure to turn off the machine first.
- The appliance is only for household use, not for commercial or industrial use.
- Always store unit indoors.
- Keep hair, loose clothing and all parts of the body away from moving parts.
- Do not use the appliance when charging cover is not in place. Do not submerge in water or other liquid.
- Use only as described in this manual. Use only recommended parts.

RiteWorx
Innovations

Compact Cordless Power Scrubber

Indoor/Outdoor Multi-Purpose Power Scrubber

Owner's Manual

Thank you for choosing our Multi-Purpose Compact Power Scrubber. Please read this manual carefully before using and keep it for future use.

Before returning his product due to technical issues, please contact us Toll Free at 877-729-8827
Email: sales@riteworxinnovations.com
www.riteworxinnovations.com

90 DAY LIMITED WARRANTY

RiteWorx Innovations, LLC warrants this product to be free from defects in material and workmanship for period of (90) days from the date of purchase, provided that the product is used in a home environment. This limited warranty does not cover failures due to abuse, accidental damage or operator error. Be sure to read all operating instructions before using this product.

Should any part fail due to manufacturers defect, we will replace it free of charge. Please call our toll free number 877-729-8827 for return authorization. All returns can be shipped to RiteWorx Innovations, LLC, 2540 US HWY 501, Aynor, SC 29511.

This product is not intended for commercial use, and accordingly, such commercial use of this product will void this warranty. Manufacturer accepts no liability for property damage or personal injury due to the operation of this product. This warranty gives you specific legal rights and you may also have other rights which vary from state to state. All other guarantees, express or implied, are hereby disclaimed.

Correct Disposal of this product:

This product uses nickel-cadmium (Nicaid) rechargeable and recyclable battery. When it can no longer be recharged, it should be removed from the unit and recycled. The battery must not be incinerated or composted.



RiteWorx Innovations, LLC
Toll Free: 877-729-8827
Email: sales@riteworxinnovations.com
www.riteworxinnovations.com

Made in China

RiteWorx Innovations, LLC
Toll Free: 877-729-8827
Email: sales@riteworxinnovations.com
www.riteworxinnovations.com