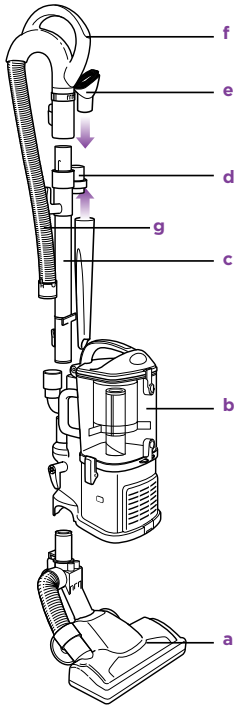


Shark

Navigator[™] Lift-Away[™]

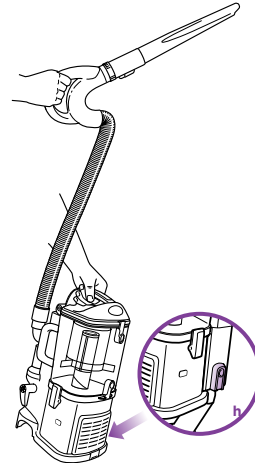
QUICK START GUIDE: VERSATILE CLEANING

Simple steps to get you cleaning with your new Shark[®] Navigator Lift-Away[™] vacuum.



UPRIGHT MODE:

- 1 Attach floor nozzle (a) into the bottom of the canister (b).
- 2 Insert extension wand (c) into the back of the canister, slide on the accessory holder (d) and place the on-board tools (e).
- 3 Insert handle (f) into the top of the extension wand and connect the hose (g) to the back of the canister.

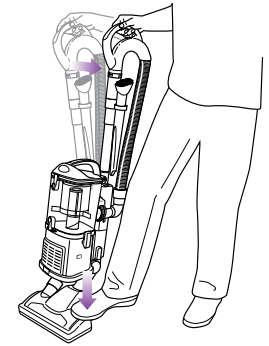


DETACHABLE LIFT-AWAY MODE

FOR ABOVE-FLOORS:

(From upright mode)

- 1 Press handle release button to detach handle (or handle with extension wand).
- 2 Press red nozzle release button (h), place foot on nozzle and pull the canister up.
- 3 Attach desired tools to clean.



- || = Carpet Cleaning
- | = Bare/Above Floor
- = OFF



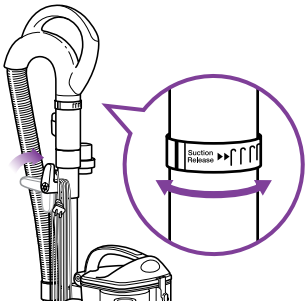
BRUSH ROLL ON/OFF:

- 1 Press the **ON/OFF** switch at the top of the canister to the 'I' position to vacuum bare floors (straight suction only) or to the '||' position to engage the motorized floor brush (for vacuuming carpets and rugs).
- 2 Tilt the handle back to activate motorized brush roll in carpet cleaning mode.

Shark

Navigator[™] Lift-Away[™]

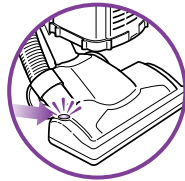
QUICK START GUIDE: USE AND CARE



SUCTION CONTROL

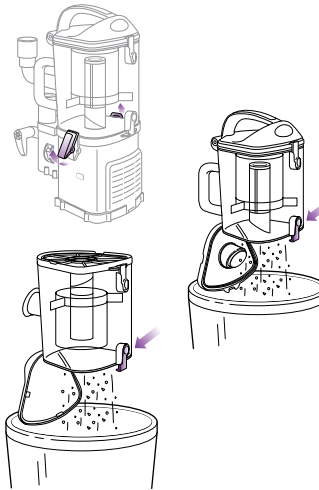
This vacuum has huge suction power. The suction can be released to make the vacuum easier to push and pull on certain types of carpets as needed.

Adjust the amount of suction by rotating the suction release collar on the handle counterclockwise to reduce the suction or clockwise for maximum suction.



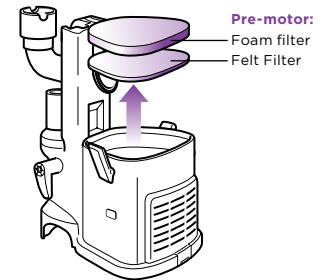
INDICATOR LIGHT

The motorized brush indicator light will illuminate **Green** when motorized floor brush is on. If there is a blockage or jam, the light will turn **Red** (see page 16 of the instruction manual).



EMPTYING THE DUST CUP

- 1 Pull up the latches on the sides of the dust cup to release.
- 2 Hold the dust cup over a trash receptacle and press the bottom door release button.
- 3 If needed, turn the dust cup upside down over the trash and press the top door release button.



CLEANING PRE-MOTOR FILTERS:

⚠ IMPORTANT: Loss of Suction may occur if foam filters are not cleaned every 3 months. Rinse and allow to air dry completely. Foam filters may appear dirty after use - this is normal.

- 1 With the dust cup removed, pull the 2 filters out from the top of the motor base.
- 2 Rinse the filters thoroughly in lukewarm water until the water runs clear.
- 3 Squeeze out excess water and let air-dry for at least 24 hours before inserting back into the vacuum.