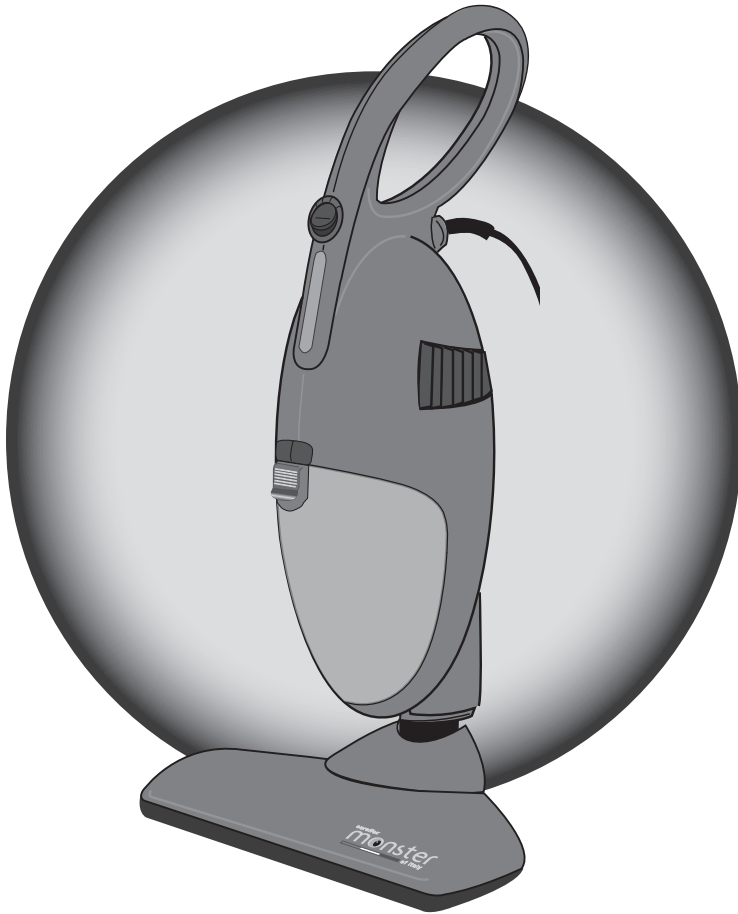


euroflex®

monster

of italy



H058 PLUS VACUUM

INSTRUCTION MANUAL



For Authentic Monster Replacement Parts
Call **888.896.8786**

Model #:
H058 Plus

IMPORTANT SAFE T

SAVE THESE INSTRUCTIONS

When using an electrical appliance, basic safety precautions should always be observed, including the following:

Read all instructions before using this appliance.

WARNING: To reduce the risk of fire, electrical shock, or injury:

1. Do not leave appliance unattended when plugged in. Unplug from outlet when not in use.
2. Do not use outdoors or on wet surfaces.
3. Do not allow to be used as a toy. Close attention is necessary when used by or near children.
4. Use only as described in this manual. Use only manufacturer's recommended attachments.
5. Do not use with damaged cord or plug. Do not use vacuum if it has been dropped, damaged, left outdoors, or dropped in water. Return it to an authorized service center.
6. Do not pull or carry by cord, use cord as a handle, or pull cord around sharp edges or corners. To unplug, grasp the plug to remove – do not pull on cord.
7. Keep cord away from heated surfaces.
8. Do not put any objects into openings. Do not use with any opening blocked – keep free of dust, lint, hair and anything that may reduce air flow.
9. Do not handle plug or appliance with wet hands.
10. Do not attempt to change accessories while unit is running.
11. Keep hair, loose clothing, fingers, and all parts of body away from openings and moving parts.
12. Do not pick up anything that is burning or smoking, such as cigarettes, matches, or hot ashes.
13. Always switch unit off before unplugging.
14. Do not use to pick up flammable or combustible liquids such as gasoline or use in areas where the vapors or materials may be present.
15. Look closely at your vacuum and follow all labels and marking instructions.
16. Keep the end of hose, wands and other openings away from your face and body.

E TY INSTRUCTIONS

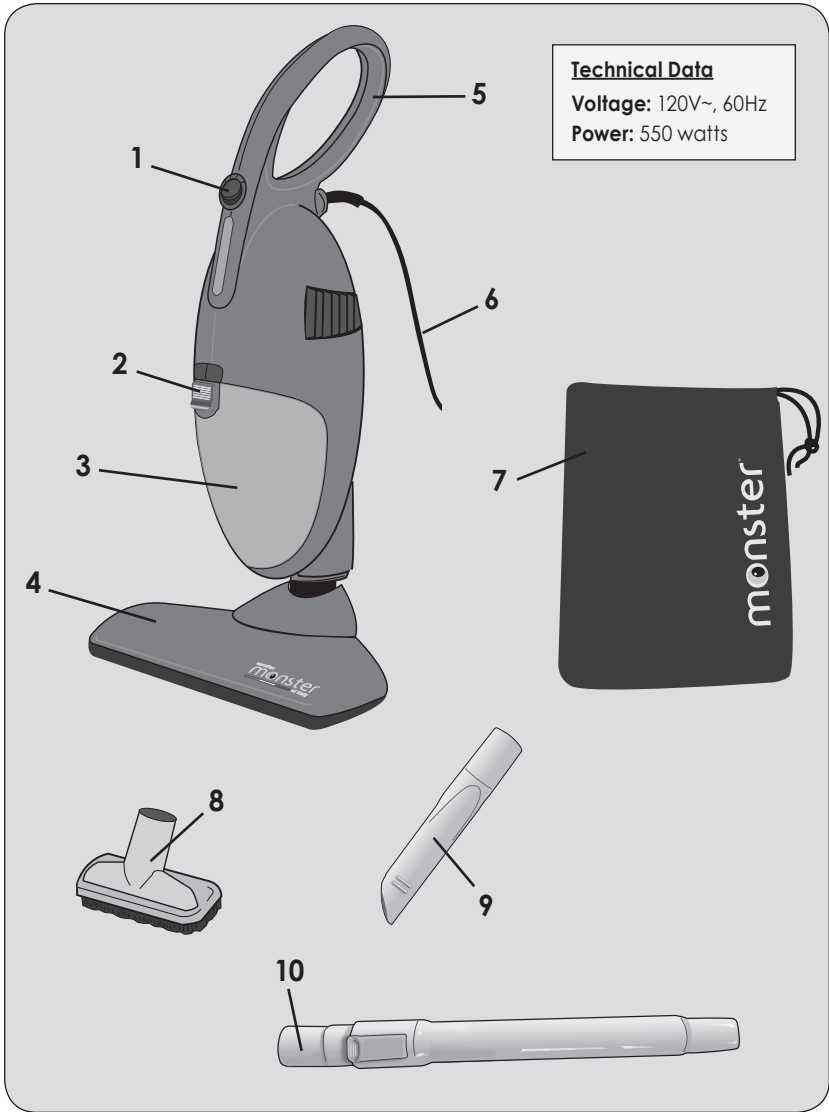
SAVE THESE INSTRUCTIONS

17. Do not use the vacuum cleaner without dust cup filter in place.
18. Always unplug this appliance before connecting or disconnecting vacuum hose.
19. Store the vacuum indoors. Put the vacuum away after use to prevent accidents.
20. Using improper voltage may result in damage to the motor and possible injury to the user. Correct voltage is listed on the rating label.
21. Use only on dry, indoor surfaces.
22. Do not use for any purpose other than described in this user's guide.
23. If the cleaner is damaged, it must be repaired by the manufacturer or its service agent or a similarly qualified person in order to avoid safety issues to the operator.
24. Use only approved and supplied parts and accessories. Use of any other kind of accessory is not recommended.
25. This appliance is not intended for use by persons (including children) with reduced physical, sensory or mental capabilities, or lack of experience and knowledge, unless they have been given supervision or instruction concerning use of appliance by a person responsible for their safety.
26. This appliance is intended for household and residential use only.
27. Read and follow all important notices in this guide.

For Authentic Monster Replacement Parts
Call **888-896-8786**

Product Description

For Authentic Monster Replacement Parts
Call **888-896-8786**



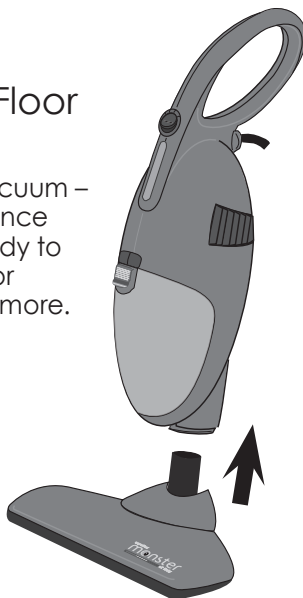
- | | |
|----------------------|---------------------|
| 1 - Power Switch | 6 - Power Cord |
| 2 - Dust Cup Release | 7 - Carry Tote |
| 3 - Dust Cup | 8 - Square Brush |
| 4 - Main Floor Brush | 9 - Crevice Tool |
| 5 - Handle | 10 - Extension Tube |

CAUTION

ALWAYS REMOVE THE PLUG FROM ELECTRICAL OUTLET BEFORE ASSEMBLING OR REMOVING ACCESSORY ATTACHMENTS!

1 Attaching the Main Floor Brush to Vacuum

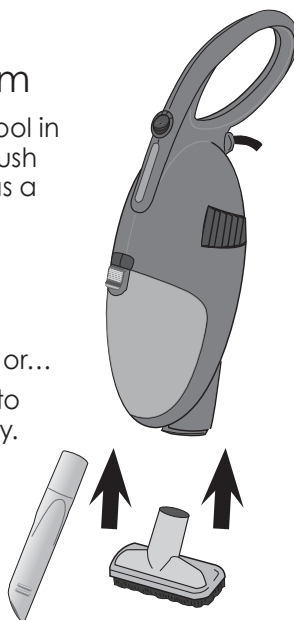
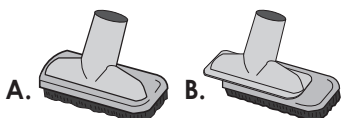
Insert Main Floor Brush into vacuum – be sure it is firmly attached. Once attached, your vacuum is ready to clean everything from desks or tables, to floors, carpets, and more.



2 Assembling & Attaching Accessories - Hand Vacuum

Attach the Square Nozzle or Crevice Tool in the same manner as the Main Floor Brush to the vacuum. Now it's ready to use as a Hand Vacuum.

- Use Crevice Tool in corners and between furniture and car cushions.
- Square Brush (A.) can be used for upholstery, blinds, books, and more, or...
- Separate Square Brush (B.), and use to clean furniture even more thoroughly.



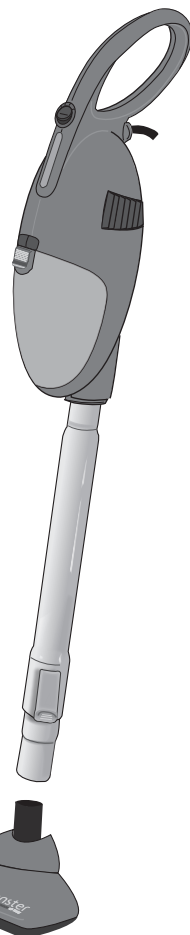
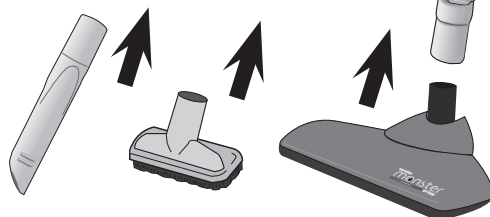
For Authentic Monster Replacement Parts
Call **888-896-8786**

3 Using the Extension Tube

First, attach the Extension Tube to vacuum in the same manner as the Main Floor Brush, then attach the accessories on the other end of the Extension Tube. Now your vacuum is ready to use as a stick cleaner.

- Attach the Main Floor Brush and use to clean hardwood floors and carpets.
- Attach the Square Brush and use to clean ceilings, ceiling fans and draperies.
- Attach the Crevice Tool and use to get into ceiling corners and other tight spaces.

For Authentic Monster Replacement Parts, call 888.896.8786



CAUTION

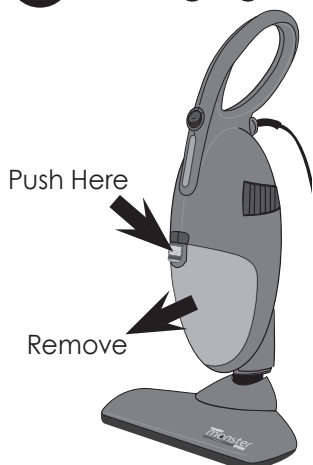
The hand vacuum is a very powerful unit. Be sure to hold it firmly, as it can slip from your hand and may cause injury.

ALSO...The suction hole must be open and free of obstructions at all times. If clogged, the motor will overheat and could become damaged.

4 Operating Your Vacuum

- Hold the vacuum firmly using the Handle.
- Push the Power Switch to the "On" position.
- You're now ready to start vacuuming.

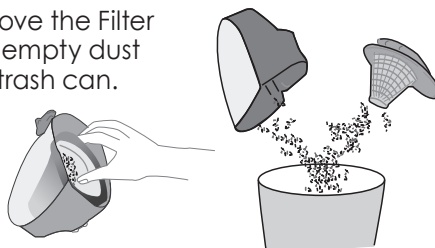
5 Changing & Cleaning Dust Cup Filter



Remove Dust Cup – Push down the Dust Cup Release and remove Dust Cup from vacuum (see image at left).

Empty Dust and Clean Filter

- Remove the Filter and empty dust into trash can.



- Rinse Dust Cup Filter with cold water and **ALLOW IT TO AIR DRY COMPLETEY** before placing it back in the Dust Cup.

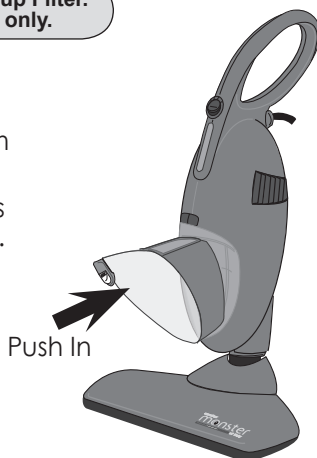
Do not use a washing machine to clean Dust Cup Filter. Do not use a hair dryer to dry the Filter. Air dry only.

Re-Attach Dust Cup to Vacuum

- Place bottom of Dust Cup into vacuum body as shown at right.
- Push Dust Cup up into vacuum until it is locked firmly in place with lock button.

Be sure Dust Cup Filter is in Dust Cup!

NOTE: We recommend replacing the Dust Cup Filter every three (3) months to ensure peak performance of the unit.



Issues	Possible Causes	Solutions
Hand Vacuum will not operate.	No power coming from electrical outlet.	Check fuse or breaker, and replace fuse or reset breaker if needed.
	Unit need servicing.	Send/take appliance to an authorized service center.
Hand Vacuum will not pick up, or suction power is weak.	Dust Cup is full.	Empty Dust Cup (see above).
	Dust Cup filter need cleaning.	Remove Dust Cup filter and check for object(s) in air duct and remove.
Dust escaping from Hand Vacuum.	Dust Cup is full.	Empty Dust Cup.
	Dust Cup filter installed incorrectly.	Review Dust Cup instructions (see above).
	There is a hole in Dust Cup filter.	Replace Dust Cup filter (see above).
Hand Vacuum brushes will not pick up.	Dust Cup is full.	Empty Dust Cup.
	Attachment may be clogged.	Unclog attachment.

LIMITED WARRANTY

Euroflex Americas warrants this product to be free from defects in material and workmanship for a period of one (1) year from the date of the original purchase, when utilized for normal household use, subject to the following conditions, exclusions and exceptions.

Should any defect covered by the terms of the limited warranty be discovered within one (1) year, Euroflex Americas will repair or replace any defective part provided the unit is returned by the original purchaser, freight prepaid, to:

U.S.: Euroflex Americas, 7850 Ruffner Avenue, Van Nuys, CA 91406 USA

Canada: Euroflex Canada, 391 Steelcase Road, W., Unit 16, Markham, ON., L3R 3V9, Canada

Proof of purchase and \$9.95 for handling and return packing/shipping charges must be included.

The liability of Euroflex Americas under this warranty is limited solely to the cost of the replacement parts or the complete unit at our option. LABOR CHARGES ARE NOT INCLUDED.

This warranty does not cover normal wear of parts and does not apply to any unit that has been tampered with or used for commercial purposes. This warranty does not apply to any defect arising from misuse of the product, negligence, failure to follow Euroflex's instructions, use on current or voltage other than that stamped on the product, alteration or repair not authorized by Euroflex, or damage due to faulty packaging or mishandling in transit (by any common carrier). Repair or disassembly by anyone other than a Euroflex authorized service center will void the warranty.

This warranty is extended to the original purchaser of the unit and excludes all other legal and/or conventional warranties. The responsibility of Euroflex Americas, if any, is limited to the specific obligations expressly assumed by it under the terms of the limited warranty. In no event is Euroflex Americas liable for incidental or consequential damages of any nature whatsoever. Some States/Provinces do not permit the exclusion or limitation of incidental or consequential damages, so the above may not apply to you.

This warranty gives you specific legal rights which vary from state to state or province to province.

If you have questions or concerns regarding your Euroflex appliance, please contact Customer Service. Please **do not return any product without contacting Euroflex for return authorization**. Unauthorized returns, as well as C.O.D. shipments, will be refused.

*Important: After receiving return authorization, carefully pack item to avoid damage in shipping. Be sure to include your name, complete address and phone number with note giving purchase information, model number and what you believe is the problem with item. We recommend you insure the package (as damage in shipping is not covered by your warranty). Mark the outside of your package "ATTENTION CUSTOMER SERVICE".

We are constantly striving to improve our products, therefore the specifications contained herein are subject to change without notice.

For Authentic Monster Replacement Parts, call 888.896.8786

You can register your product online at: **www.euroflexusa.com**



euroflex[®] **EUROFLEX AMERICAS**
CUSTOMER SERVICE • 888.896.8786

H058 Plus QVC 9/17/14

EFLX-083 A