

# User's Manual



## **HOVER-WAY**

Hands-Free Electric Scooter

Thank you for your purchase of the Hover-Way Hands-Free Electric Scooter to ensure your safety and the safety of others, please read and follow these instructions in full.

# Support

**If you are having problems with your product, please contact  
Hover-Way Customer Support before contacting your retailer.  
(866) 696-3421 • [support@hover-way.com](mailto:support@hover-way.com)**

## Limited Warranty Statement

Hover-Way provides warranty against defects in workmanship and materials for a 12 month period from the original purchase date. Hover-Way requires valid documented Proof of Purchase (receipt from retailer) in order to obtain warranty services. If this product fails during the 12 month limited warranty period, Hover-Way reserves the right to repair or replace any parts or products that are determined to be defective due to workmanship or material. Any replacement or repair done by Hover-Way services, will not restart your 12 month limited warranty. Your device is only covered under the original warranty period. This warranty is only offered to the original purchaser of the product and is not transferable to anyone else.

Hover-Way's Limited Warranty does not cover damages caused by user operation, cleaning and maintenance of product, incorrect installation, any accidents or damages from extreme temperatures and/or improper use or handling. Hover-Way's limited warranty does not cover the products from software issues or normal wear and tear of the product, nor does it cover any problem that is caused by conditions, malfunctions, or damage not resulting from defects in material or workmanship. These conditions may include, but are not limited to, road hazards, accidents, and improper operation or maintenance. Hover-Way reserves the right to not provide service for products whose serial numbers have been altered, defaced and/or removed as well as products whose housing have been opened. In no event shall Hover-Way be liable for any incidental, indirect, or consequential damages or liabilities (including but not limited to, incidental or consequential damages for loss of time, inconvenience, loss of use of product, or any other consequential or incidental loss) in connection with the purchase, use, or operation of Hover-Way products. Hover-Way is not liable for property damage, personal injury, or death.

Please contact Hover-Way using the phone number above for specific instructions on obtaining warranty services.

This warranty gives you specific legal rights and you may also have other rights which vary from state to state.

# General Information

---

## About the manual

Before operating this vehicle, you **MUST** read all the instructions for safe assembly and operation. This User's Manual, will guide you through the functions and usage of your Hover-Way Hands-Free Electric Scooter.

If you have any questions or you cannot find the information you need in the manual, please contact our company immediately.

## The risk of using Hover-Way Hands-Free Electric Scooter

The Hover-Way Hands-Free Electric Scooter is a self-balancing smart transportation and recreational device. It has gone through rigorous testing to ensure its safety. However, if you don't follow the instructions in the manual, you may be injured.

### **WARNING!**

No matter when and where, there is a possibility you may crash, fall off, lose control, etc., causing injury and even death. In order to avoid being injured, please read this manual fully and carefully.

## Before you begin

Before usage, check that the battery is fully charged. The likelihood of injury or death will increase if you don't follow the proper operating instructions in this manual.

## Important information

When reading this manual, please pay attention to 'WARNING' and 'NOTE' in all capital letters.

<b>WARNING!</b>	<b>Read and understand the following or you may be injured.</b>
<b>NOTE:</b>	<b>The following explanation requires your attention.</b>

# Product introduction

---

## Description of the Hover-Way Hands-Free Electric Scooter

The Hover-Way Hands-Free Electric Scooter is a self-balancing vehicle which can go forwards and backwards. It's steering and stopping are controlled by Dynamic Equilibrium. It is simple to operate, easy to control, and looks incredibly cool!

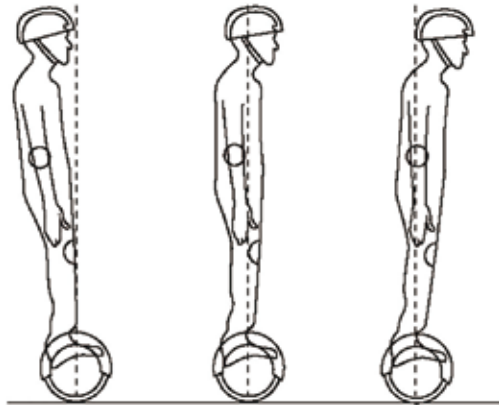


# Hover-Way Diagram



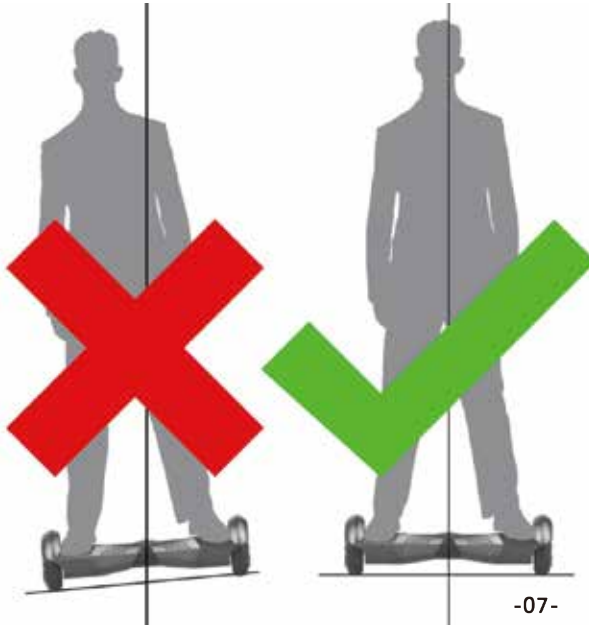
## How it works

- The Hover-Way Hands-Free Electric Scooter, uses an internal gyroscope and acceleration sensors to move based on your center of gravity. When you lean forward, it will sense your actions and accelerate. When you need to turn, make sure you first slow down and then gently shift the weight on your left or right foot to turn the opposite direction.
- The Hover-Way Hands-Free Electric Scooter has an inertial dynamic stabilization system that keeps you upright. However, it will **stop detecting you** if you lean too far left or right or you take a foot off the board. Making sure you slow down before turning will help you avoid falling off and being injured.



### Pedal sensor

The Hover-Way Hands-Free Electric Scooter has 4 sensors below the pedals. When the operator steps on a pedal, the Hover-Way Hands-Free Electric Scooter will adjust itself to balance automatically.



### WARNING!

When riding the Hover-Way Hands-Free Electric Scooter, you must make sure that you are touching the pedals. Please don't step on the outside part of the pedal; it won't detect you. Do not lean too far back or forward, and do not ride on a slope.

Don't put any objects on the pedals as the Hover-Way Hands-Free Electric Scooter will not lock and by placing objects on the pedals, you are increasing the possibility that it will drive off and crash into something, damaging the Hover-Way Hands-Free Electric Scooter and possibly causing injury to yourself or others.

## Indicator lights

The indicator lights are located in the middle of the Hover-Way Hands-Free Electric Scooter.

- **Battery Indicator:** A solid green light means the battery is fully charged. When the light starts to flash green, there is a 50% battery life remaining. When it turns red the battery life is below 20%. When the battery life is below 20%, **stop using the Hover-Way Hands-Free Electric Scooter immediately and recharge the battery.** The Hover-Way Hands-Free Electric Scooter will stop self-balancing at this point and you have a potential to fall and injure yourself.
- **Operation Indicator:** When the pedal is triggered, the Operation Indicator will light up green to show that the system is operating normally. If the system is experiencing an error, the Operation Indicator will turn red.

**WARNING!**

Immediately get off the Hover-Way if the low battery indicator comes on. The Hover-Way will not self balance and you will fall.





## Safe Use

---

We sincerely hope every operator can ride the Hover-Way Hands-Free Electric Scooter safely and enjoy it. Think back to when you were learning to ride a bike, drive a car, go skiing or skateboarding, etc. Remembering those experiences will help you learn how to master your Hover-Way Hands-Free Electric Scooter faster.

- Follow this User's Manual to learn to ride the Hover-Way Hands-Free Electric Scooter safely. We highly advise you read the manual carefully and in full, prior to the first time of use. Before riding, make sure the tires are undamaged and mechanical parts are not loose. If there is anything abnormal, please contact us for immediately.
- Please read the manual carefully. It covers a lot of Important Information, Including speed limitations, Indicator warnings turns and how to turn safely etc..
- Please never use the Hover-Way Hands-Free Electric Scooter to do anything that may cause personal injury and/or property damage.
- Please do **NOT** modify the mechanical parts of the Hover-Way Hands-Free Electric Scooter. This is a high-tech, precision device and any modifications can cause unexpected results, which may cause damage to yourself, others, or surrounding property besides voiding the warranty on the device.

### Weight Limitation

- The reason for the weight limitation:
  1. To guarantee the safety of the operator.
  2. To ensure the Hover-Way Hands-Free Electric Scooter operates properly.
- Maximum load: 220 LBS (100 KG)
- Minimum load: 44 LBS ( )

If the Hover-Way Hands-Free Electric Scooter is overloaded, you potentially may fall off and cause injuries.

## **Range per charge**

The range per charge is related to many factors, for example:

- Topography: On smooth even road, the estimated range per charge will increase, whereby if you are using a rough road, the estimated range will decrease.
- Weight: The weight of the operator will influence the driving distance.
- Temperature: If the Hover-Way Hands-Free Electric Scooter gets too hot or too cold, the driving distance will decrease.
- Maintenance: If the Hover-Way Hands-Free Electric Scooter is charged properly and the battery is kept in good condition, the driving distance will increase. Improper charging and maintenance will cause the driving distance to decrease.
- Speed and driving style: keep a moderate, consistent speed to increase the driving distance. Frequent start and stopping, acceleration and deceleration, will reduce the driving distance.

## **Max. Speed**

- The maximum speed of the Hover-Way Hands-Free Electric Scooter is 10 mph (16 km/h).
- When the operator exceeds the maximum speed, the Hover-Way Hands-Free Electric Scooter will sound an alarm.
- At recommended speeds, the Hover-Way Hands-Free Electric Scooter will balance itself well, but when going faster than recommended, the Hover-Way Hands-Free Electric Scooter will lose balance causing you to fall off.

## **Max. Incline**

- Do not operate on hills or slopes of more than 30° incline.
- At recommended inclines, the Hover-Way Hands-Free Electric Scooter will balance itself well. When the incline is greater than recommended, you will lose control and fall off.

# Learning to use the Hover-Way Hands-Free Electric Scooter

---

This user manual includes instructions and notes; the operator must read it carefully, fully, and follow the instructions. It is very important for you to know all of these rules.

## **Learning to use it.**

Step 1: Press the Power switch to turn the Hover-Way Hands-Free Electric Scooter on.

Step 2: Get ready to drive. First, step on one pedal to trigger the foot-switch. The system will enter self-balancing mode. Then step on with your other foot.

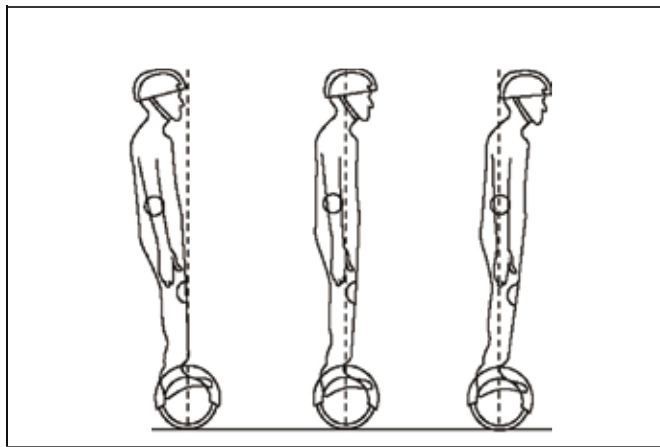
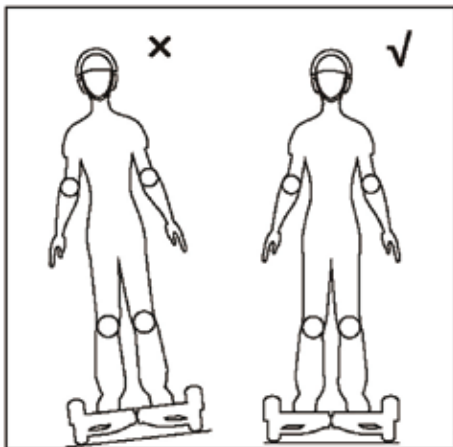
Step 3: Stand upright but maintain a relaxed stance. Do not make any sudden or jerky movements. Shift your weight forward or backwards to control the Hover-Way Hands-Free Electric Scooter.

Step 4: Shift your weight to turn in the opposite direction. Putting more weight on your right foot will turn left, putting more weight on your left foot, turns right.

Step 5: Before you get off, make sure that the Hover-Way Hands-Free Electric Scooter has fully stopped. Then step off 1 foot at a time. Be very careful when stepping off this vehicle.

## **NOTE:**

If the Hover-Way Hands-Free Electric Scooter doesn't self-balance when you trigger the foot-switch, the warning LED will light. Do NOT operate the Hover-Way Hands-Free Electric Scooter. Wait a few minutes and try again. If you are on a slope, move the Hover-Way Hands-Free Electric Scooter to flat ground and try again. If this continues, please contact technical support. **DO NOT OPERATE!**



### Diagram of operation

#### **WARNING!**

Do not turn suddenly while driving fast. Doing so will result in an accident.

Do not ride sideways or turn on a slope. The self-balancing sensors will malfunction, potentially jeopardizing your safety.

## Calibration

If your Hover-Way Hands-Free Electric Scooter seems to pull to the left or right, you may need to recalibrate its sensors. The process requires two levels, available at any hardware store.



Step 1: Start with the Hover-Way Hands-Free Electric Scooter powered off.

Step 2: Place each level parallel with the wheel touching the inside of the wheel base.

Step 3: Rotate the Hover-Way Hands-Free Electric Scooter until both levels on each wheel base are level.  
If you do not have a level, make sure both platforms are equal with each other and level to the ground as best as possible.

Step 4: While keeping the Hover-Way Hands-Free Electric Scooter level, hold the power button down. The Hover-Way Hands-Free Electric Scooter will make the normal power on tone. Wait 3 seconds and you will hear a single beep. Release the power button. The front LEDs will begin flashing. Power the Hover-Way Hands-Free Electric Scooter off.

Step 5: Power the Hover-Way Hands-Free Electric Scooter on again. Your vehicle should now be calibrated. If the Hover-Way Hands-Free Electric Scooter is still not calibrated correctly, repeat Steps 1-5.

## Safety Guidelines

- During operation, if the system encounters an error or being operated incorrectly, the Hover-Way Hands-Free Electric Scooter will alert the operator. It will sound an alarm and light error indicator LED1.
- When you step on the Hover-Way Hands-Free Electric Scooter the platform may tilt forwards or backwards up to 10 degrees. It will not function if it tilts greater than that.
- The Hover-Way Hands-Free Electric Scooter will not function in the following conditions:
  1. If the voltage of the battery is too low.
    - a.If the battery is too low, the Hover-Way Hands-Free Electric Scooter will turn off in 15 seconds to preserve the battery.
  2. During charging.
  3. If it flips upside down.
  4. If you are going too fast.
  5. If it is shaking too much, like if you are on uneven or rocky ground.
  6. If the battery is overworked, like when climbing a very steep slope. Again the battery will power off within 15 seconds to preserve the battery life.

# WARNING!

When the Hover-Way Hands-Free Electric Scooter enters into a shutdown state, the system will lock down the machine automatically. It can be unlocked by pressing the unlock button. When the battery has been depleted or an error alarm or indicator light goes off, please do NOT continue to drive the Hover-Way Hands-Free Electric Scooter. The self-balancing may malfunction and the driver is likely to be harmed. If the battery reaches minimum capacity, continuing to drive the vehicle will reduce the battery life.

## Practicing

Before you drive the Hover-Way Hands-Free Electric Scooter outdoors, please make sure you are familiar with the skills of driving it.

- Wear casual clothing and flat shoes to maintain your flexibility and stability.
- Please practice in open spaces until you can easily get on, move forward, backwards, turn, stop, and get off with ease.
- Make sure the pavement is even. Do not drive on a slope until you are experienced.
- The Hover-Way Hands-Free Electric Scooter is designed for smooth roadways. When driving on uneven pavement, the operator should slow down. Be careful or the Hover-Way Hands-Free Electric Scooter will potentially lift off the ground.
- If you are unfamiliar with the Hover-Way Hands-Free Electric Scooter, avoid driving in places with pedestrians or obstacles.
- Be careful going through doors; remember are 4 inches taller than normal and might hit your head.

This chapter will focus on safety knowledge and warnings. Before operating this vehicle read all the instructions for safe assembly and operation. This user's manual will guide you through the functions and usage of the Hover-Way Hands-Free Electric Scooter. To ensure the best driving experience, read the user manual carefully and fully before operation.

- Before you start familiarize yourself with the operating instructions so that you can keep the Hover-Way Hands-Free Electric Scooter in the best condition. Otherwise you may crash and lose control.
- When you are learning to use the Hover-Way Hands-Free Electric Scooter, make sure that all safety measures are made. Wear a helmet, knee pads, elbow pads, and other protective gear.
- The Hover-Way Hands-Free Electric Scooter is only for personal entertainment. You may not be allowed to ride it on sidewalks and streets. Check your local laws first.
- Do not ride in traffic.
- Children, the elderly, and pregnant women should not drive the Hover-Way Hands-Free Electric Scooter.
- Do not drive while intoxicated or under the Influence of medication or drugs.
- Do not carry items when driving.
- When driving the Hover-Way Hands-Free Electric Scooter you must comply with local laws and yield to pedestrians.
- Please be alert to your surroundings. Do not drive in dimly lit or dark places.
- Relax your legs while driving, keeping your knees slightly bent. This will help maintain balance when you hit uneven ground.
- Make sure your feet are always on the pedal. Taking your feet off Hover-Way Hands-Free Electric Scooter while driving is extremely dangerous.
- The Hover-Way Hands-Free Electric Scooter can only be used by ONE PERSON at a time. Do not let two or more people ride it.
- Do not start or stop suddenly.
- Avoid driving on steep slopes.



- The weight of the user and their belongings should not exceed the maximum weight indicated in the instructions otherwise you may damage the Hover-Way Hands-Free Electric Scooter, or the driver may fall and/or be injured. The driver's weight should also not be lower than the minimum weight marked on the instructions. Otherwise the Hover-Way Hands-Free Electric Scooter will be difficult to control. This is especially true when riding downhill as the Hover-Way Hands-Free Electric Scooter may reach unsafe speeds.
- Ensure the vehicle speed is safe to yourself and others, and be ready to stop at any time.
- If you become in an accident, contact EMS/911 right away.
- Please make sure of all things around you to avoid a collision.
- When steering, pay attention to your body's center of gravity. A sudden shift may cause you to fall. Do not ride backwards for long distances or at high rates of speed. Be careful when riding backwards and turning.
- The Hover-Way Hands-Free Electric Scooter is not a medical mobility device. Be sure you are healthy enough to ride this vehicle.
- Avoid driving over obstacles and slippery ground such as snow, ice, and/or wet surfaces.
- Avoid driving on items made of cloth, small branches, and stones.
- Avoid driving in narrow spaces or where there are obstacles.
- Only drive the Hover-Way Hands-Free Electric Scooter where permitted. Local laws might restrict where you can ride.
- Do not operate near flammable vapor, liquids, dust or fibers, and other fire hazards.

### **WARNING!**

Remember, the Hover-Way Hands-Free Electric Scooter is a motor vehicle, and is treated as such by local law. You can and will be arrested for drunk driving. Always wear safety gear. **We are not responsible for injury or accidental death.**

# Battery Usage

---

This chapter mainly discusses the charging methods, how to maintain the battery, safety issue you need to pay attention to, and the battery specifications. For the safety of yourself and others, and to extend the battery's life and improve battery performance, please be sure to follow these instructions.

## Low battery

When you find the battery indicator is red, it indicates low battery. It is recommended that you stop driving, when power is low. There is not enough energy for normal driving.

The system will automatically stop and tilt the base of the platform to discourage you from using it. It is very easy to fall if you insist on driving at this time. You may also affect the battery life.

- Do not the battery in the following cases.
  1. It is giving out some odor or excessive heat.
  2. Something is leaking.
- Disassembly and battery maintenance should only be performed by an authorized professionals.
- Do not touch any substance leaking out of the battery.
- Do not let children and animals touch the battery. Before installing the battery, disconnect the charger. When charging, you may not operate the Hover-Way Hands-Free Electric Scooter.
- Batteries contain dangerous substances inside. Do not open the battery. Do not insert anything into the battery.
- Only use chargers offered by our company.
- Overworked lithium batteries can explode. Excessive discharge due to modification (over-volting) is dangerous. Do not dispose of in fire.
- Battery operated motor vehicles can only be used under the permission of the local law.

## Charging steps

- Locate the charging port on the back of the Hover-Way Hands-Free Electric Scooter.
- Ensure the charging port is dry.
- First plug the charger into the wall (100V-240V; 50,60Hz). Verify the green light lights up, then plug the other end of the charger into the Hover-Way Hands-Free Electric Scooter.
- The red indicator light on the charger indicates that it is charging properly. If the light does not come on, check that the charger is connected securely to the wall and to the Hover-Way Hands-Free Electric Scooter.
- When the Indicator light changes from red to green, the battery is fully charged. Please stop charging. If you keep it on the charger, it will reduce the battery life.



- Please charge and store in accordance with these instructions, otherwise it will damage the battery.
- The charging time is approximately 2 hours. Charging longer than that will affect the battery's life.
- Please keep the charging environment clean and dry.
- If the charging port is damp, don't charge it.

## **Battery temperature**

- If you want the Hover-Way Hands-Free Electric Scooter to operate efficiently, battery temperature must be within the following range.
- The temperature before and while charging must be within the recommended value. The charging efficiency is the highest when the battery is near the recommended temperature. If it is too cold or hot, the charging time will be longer and/or the battery will not fully charge.

## **7.4 Battery Specifications**

**Battery = Lithium-ion battery**

**Charging time = 2-3 Hours**

**Voltage = 36V**

**Initial Volume = 4.4AH**

**Working Temperature = 5 degrees F -122 degrees F**

**Charging Temperature = 32 degrees F – 104 degrees F**

**Relative Humidity of Storage = 5% to 96%**

## Transporting the battery

### **WARNING!**

Lithium-ion batteries are considered hazardous material. Transporting it is governed by Federal, State, and Local laws.

**Note:** International law prohibits shipping bare lithium batteries. If you ship your Hover-Way Hands-Free Electric Scooter, you must ship it with the battery installed. You **MUST** not ship the battery separately.

Your Hover-Way Hands-Free Electric Scooter needs to be maintained. This chapter describes the steps you must take to maintain your vehicle along with tips and reminders to keep your Hover-Way Hands-Free Electric Scooter running properly. Please make sure the power and charge coil is off before you perform the following.

## 8.1 Cleaning

- Make sure the power and the charge coil are off.
- Wipe the outer shell of the Hover-Way Hands-Free Electric Scooter with a soft, dry cloth.

### **WARNING!**

- The Hover-Way Hands-Free Electric Scooter meets IP54 water-resistance. It can with stand small splashes but do NOT submerge.
- Do not let water or liquids get into the Hover-Way Hands-Free Electric Scooter. It will cause permanent damage to the internal electronics. Wipe all dirt from your Hover-Way Hands-Free Electric Scooter, and do not store in a dusty environment.

## 8.2 Storage

- Before storing, fully charge Hover-Way Hands-Free Electric Scooter to prevent battery over discharge due to non-usage.
- If planning to stored more than one month. Remove the battery. Discharge and recharge the battery every three months
- If the storage temperature is below 32 degrees Fahrenheit. Please do NOT charge the Hover-Way Hands-Free Electric Scooter. Put it in a warm environment (higher than 50 degrees Fahrenheit and let the vehicle warm up before charging.
- Cover the Hover-Way Hands-Free Electric Scooter to keep dust out. Dust and sand can get in the motor and cause problems.
- Store Indoors at a dry and suitable temperature. Do not store in an unheated garage or shed.

### **WARNING!**

- Only authorized repair center may open and service the Hover-Way Hands-Free Electric Scooter. Attempting to repair or modify your Hover-Way Hands-Free Electric Scooter will void all warranties.

## Specifications



## Specifications

<b>Name</b>	<b>Parameter</b>	<b>Comments</b>
<b>Net Weight</b>	<b>22 LBS</b>	
<b>Minimum Load</b>	<b>44 LBS</b>	
<b>Maximum Load</b>	<b>220 LBS</b>	
<b>Maximum Speed</b>	<b>10MPH</b>	<b>Distance varies depending on terrain, driving style and load.</b>
<b>Range Per Charge</b>	<b>9.3-12.4 MI</b>	<b>Depending on load.</b>
<b>Climbing Capacity</b>	<b>15°</b>	
<b>Turning Radius</b>	<b>0°</b>	
<b>Energy</b>	<b>Rechargeable Li-ion Battery</b>	
<b>Charger Voltage</b>	<b>100-240V 50-60HZ</b>	
<b>Dimension</b>	<b>23 x 4 x 7 IN</b>	
<b>Chassis Height</b>	<b>1.18 IN</b>	
<b>Pedal Height</b>	<b>4.3 IN</b>	
<b>Tire Type</b>	<b>Herd Rubber Tire</b>	



## Packing List

NO.	Name	Quantity
1	Hover-Way electric skateboard	1
2	Charger	1
3	Manual	1



Have a Safe, Fun Ride!

# HOVER-WAY

# IMPORTANT SAFEGUARDS:

When using an electrical product, basic precautions should always be followed, including the following:

READ ALL INSTRUCTIONS BEFORE USING:

- THIS IS NOT A TOY. Not for use by children.
- Please do not attempt to change or remove the lithium battery yourself.
- Do not dispose of batteries in fire.
- Do not leave batteries in hot places such as an automobile under direct sunlight.
- Do not mix used and new batteries, or install used batteries in other equipment.
- Do not mix Alkaline, Standard (Carbon-Zinc) or Rechargeable (Nickel Cadmium) or (Nickel Metal Hydride) batteries.
- Do not reverse the polarity (positive and negative terminals) of batteries.
- Batteries should be recycled or disposed of as per state and local guidelines.



**This device complies with Part 15 of the FCC Rules.**

**Operation is subject to the following two conditions:**

- (1) This device may not cause harmful interference, and**
- (2) This device must accept any interference received, including interference that may cause undesired operation.**

Changes or modifications to this unit not expressly approved by the party responsible for compliance could void the user's authority to operate the equipment.

# WARNING!

It is important that you follow all safety warnings that appear throughout your Hover-Way Hands-Free smart board manuals and that you use good judgment when you ride your Hover-Way. If you have questions, or do not have the Hover-Way Manual contact Hover-Way before you attempt to use your Hover-Way board.

The Hover-Way is self-balancing, personal transporter that uses balancing technology.

Note: Balancing technology cannot prevent injury if you do not ride the Hover-Way safely. Please review the below safety warnings.

- Always wear shoes, a helmet, and appropriate safety gear such as knee and elbow pads when riding. Use an approved bicycle or skateboard helmet that fits properly with the chin strap in place, and provides protection for the Front, back and sides of your head.
- Do not ride without proper training. Please review manual for operation.
- Avoid obstacles and slippery surfaces that could result in a loss of balance or traction and cause a fall.
- Do not ride at high speeds, on uneven terrain, or on slopes. Do not perform stunts or turn abruptly
- Never place anything on the rider detection pads except your feet. Doing so could interfere with the Rider Detection system and may allow the Hover-Way to travel on its own, risking running into a person or property and causing injury or damage.
- Never step off of the Hover-Way when it is in motion. If you step off the Hover-Way while in motion, you risk injury to yourself, others, and damage to the Hover-Way.
- Although the Hover-Way is designed to be as stable as possible for a design that utilizes two self-balancing wheels, it is possible to “override” the Hover-Way and tip over when riding too fast for the conditions. Always be aware of the riding surface and environmental conditions while riding. Be alert. Scan both far ahead and in front of the wheels — your eyes are your best tool for safely avoiding obstacles and slippery surfaces.
- Do not carry one or more passengers.
- Do not ride your Hover-Way after consumption of alcohol, drugs, or while intoxicated. You must comply with local laws and give way to pedestrians.
- All riders must be over 4' tall and must weigh more than 44lbs. The maximum weight limit is 220lbs.

## RISK OF DEATH OR SERIOUS INJURY

Assumption of Risk: By riding our Hover-Way the user acknowledges and accepts responsibility of all risks associated with the use of the Hover-Way Hands-Free Smart Board, which may include, but are not limited to, muscle injuries, broken bones, lacerations, serious injury, and possibly death, which may be sustained while using the Hover-Way. To ride safely, you must read and follow all instructions and warnings in the User Manual.

**HOVER-WAY**

Hands-Free Electric Scooter