

BERNINITM

F O U N T A I N S

Bernini Rechargeable Garden Fountain Owners Manual





BERNINITM

F O U N T A I N S

PLEASE READ FIRST BEFORE RETURNING

**Please call us for assistance at 1-619-449-2392
or email us at customercare@berninifountains.com**

Our Customer Care Department is available:

Monday - Friday 8:30am to 4:00pm PST, 11:30am to 7:00pm EST

If you have any questions regarding assembly, parts, or operation, please visit our website at www.berninifountains.com. You will find instructional videos on how to assemble and operate your fountain, and keeps you up to date on our newest products. You can also email us with any questions you have.

This product comes with a one year limited warranty
against materials and workmanship.

**Please review the list of accessories included with your
BerniniTM Fountain on the next page. Please note, images of parts
are not to scale with one another.**



CONTENTS

1	Step 1: Assembling Base & Large Bowl
2	Bowl Locking System
4	Step 2: Preparing The Large Bowl For The Floral Plate
5	Attaching The Water Pump Tube
5	Filling Your Fountain
6	Step 3: Installing The Floral Plate
7	Installing The Floral Plate
8	Floral Plate Alignment Notches
9	Step 4: Connection Port & Battery Installation
10	Connecting The Battery
11	Inserting the Battery Compartment Door
12	Removing The Battery Compartment Door
13	Step 5: Water Spray Tip Alignment & Adjustment
14	Water Spray Tip Alignment & Adjustment
14	Adjustment Points
15	LED /Lights Adjustment
15	Spray Nozzle Adjustment
16	Step 6: Fountain Startup
17	Prior to Startup
17	Operating your Fountain
20	Step 7: Installation Of The Dancing Water Attachment & Bird Finial
21	Dancing Water Attachment Installation
21	Bird Finial Installation
23	Troubleshooting & Maintenance
23	Cleaning Your Fountain
23	Cleaning Out The Spray Nozzle Plugs
24	Cleaning The Spray Nozzles
24	Cleaning The Spray Nozzle Holes
24	Cleaning The Finial Drain Tubes
25	Cold Storage
25	Recharging The Battery
26	Cleaning The Water Pumps
26	Water Pump Air Filters
26	Water Pump Impeller
27	Priming The Water Pump
28	Water Pump Tray
28	Water Pump Electrical Connectors
30	Using Leveling Shims
30	Weighing Down Your Fountain
30	Water Pump Connection

Parts for Your Bernini™ Fountain:



Bird Attachments



Finial



Floral Plate



Large Bowl
(2 Water Pumps
& LED Lights
pre-installed)



Base



Spare Fine
Mesh Filter



Black Foam
Ring



Extension Tube



Water Pump
Tube



Dancing Water
Attachment



Battery Compartment
Door



Leveling Shim



Connection Port



Rechargeable
Battery

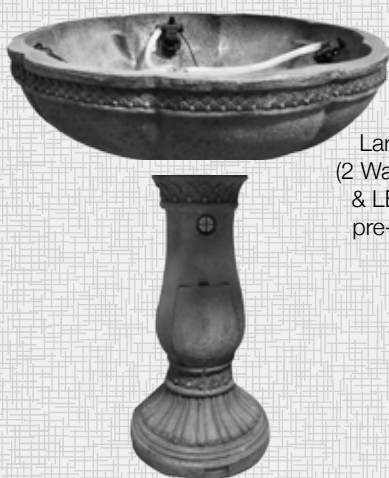


Battery Charger

Step 1:

Assembling Base & Large Bowl

You will need:



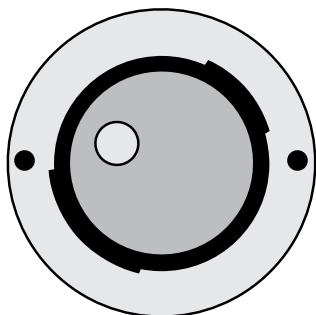
Large Bowl
(2 Water Pumps
& LED Lights
pre-installed)

Base

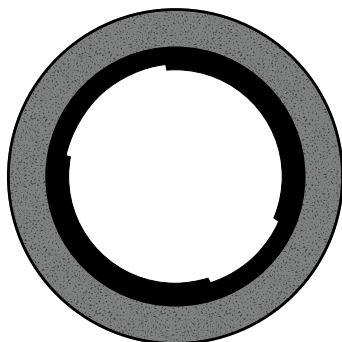


Bowl Locking System

A look at how the bowl locking system works on your Fountain.



Bottom of Large Bowl



Top of Base

Note: You will notice that there are two different sized tabs on the bottom of the Large Bowl and there are two corresponding grooves in the top of the Base. These tabs fit together and lock when turned clockwise.



Step 1: Be sure to place the base of your fountain on a firm, flat surface.



Step 2: On the bottom of the large bowl you will find two black cables. Feed these cables through the base.



Step 3: Set the Large Bowl on the Base ensure that you line up the inner locking grooves and apply downward pressure on the Base with your foot to hold it in place & prevent it from turning.



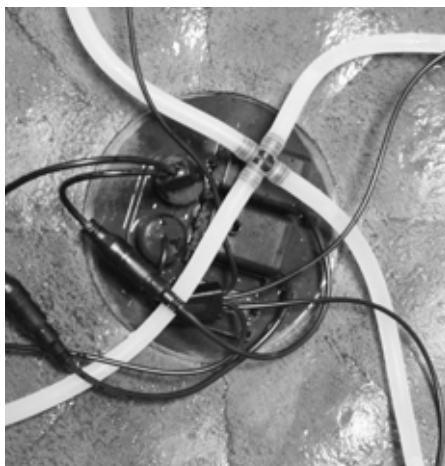


Step 4: Turn the large bowl a quarter turn clockwise to lock it into place.



You will have three cables hanging down inside of the Base. These will be connected in a later step.

Note: If one or both of the Water Pumps has come out of the Water Pump mounting plate simply push it back into the designated holder until it locks into place. Refer to the picture below for correct positioning.



At this point, your fountain should look like the image above. Go to the next page for the next step to setup your new Bernini™ Fountain.



Step 2:

Preparing The Large Bowl For The Floral Plate

You will need:



Assembled
Base &
Large Bowl

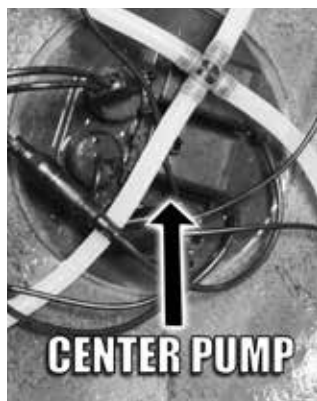


Water Pump Tube



Attaching The Water Pump Tube

Note : One end of the Water Pump Tube is larger than the other, ensure to connect larger end towards the Water Pump.



In this step you will be installing the tube on to the Center Water Pump.



Step 1: Hold the water pump tube and place the bigger end onto the center water pump.



Step 2: Push into place with minimal force.

Fill Your Fountain

After you have assembled the water pump you can now fill the Large Bowl until the water is about 1 inch (2.5 centimeters) from the top of the tabs.



At this point, your fountain should look like the image on the right. Go to the next page for the next step to setup your new Bernini™ Fountain.



Step 3:

Installing The Floral Plate

You will need:



Fountain
Assembled



Floral Plate



Installing The Floral Plate

After installing the Water Pump Tube, you are now ready to install the Floral Plate to the fountain.



Step 1: The Floral Plate can be heavy, hold it with both hands.



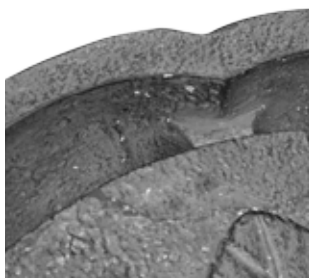
Step 2: Align the Water Pump Tube with the hole in the middle of the Floral Plate.



Step 3: Position the Floral Plate so that the curved cut outs in the Floral Plate are aligned with the LED Lights and spray tips.



Step 4: Rest the Floral Plate on the tabs built into the Large Bowl.



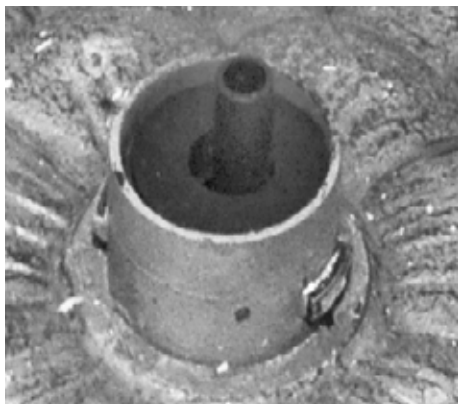
In the Large Bowl there are small tabs for the Floral Plate to sit on. Make sure that your Floral Plate is resting on the correct spot.



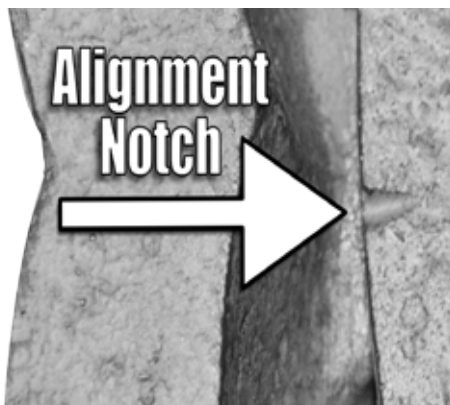
Step 5: Install the Black Foam Ring in to the center of the Floral Plate around the Water Pump Tube.



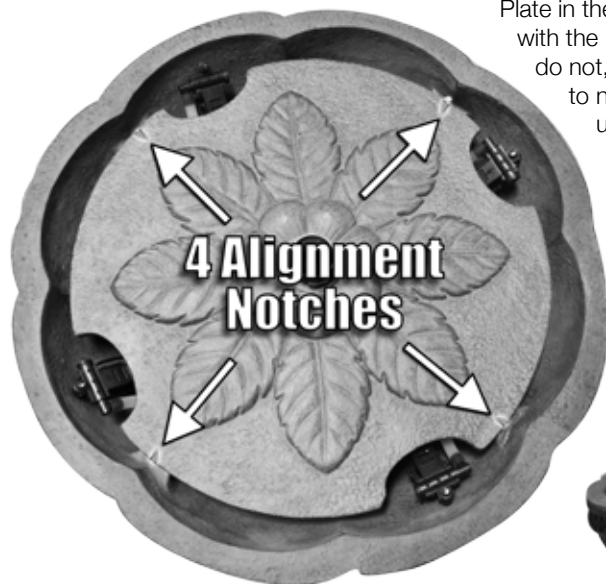
Floral Plate Alignment Notches



This shows the Black Foam Ring installed properly.



You will notice 4 small notches in the Floral Plate. These notches are to align the Floral Plate in the Large Bowl which should align with the point shape in the bowl. If they do not, lift the floral plate up and rotate to next position and set back down until they line up. Note: this is not critical, this just to help properly align the plate & bowl.



At this point, your fountain should look like the image on the left. Go to the next page for the next step to setup your new Bernini™ Fountain.



Step 4:

Connection Port & Battery Installation

You will need:



Fountain
Assembled



Connection Port



Rechargeable
Battery



Battery
Compartment
Door



Connecting The Battery



Step 1: In the open Battery Compartment, you will see three cords hanging down that you must connect to the Connection Port.

If you do not see the three cables inside the battery compartment, reach up into the base and gently pull them down until they are hanging inside the battery compartment.



Step 2: Connect the color coded cords from inside the Base to the corresponding color coded receptacles on the Connection Port.
Use the image below for more help on connecting the battery.

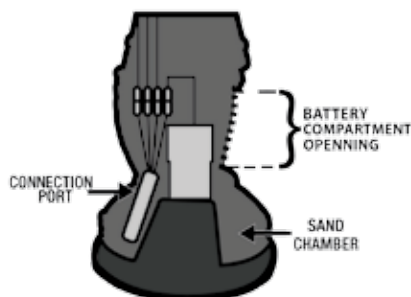


Step 3: Place your connection port inside the designated angled area located at the back of your fountain base.
(See illustration below)

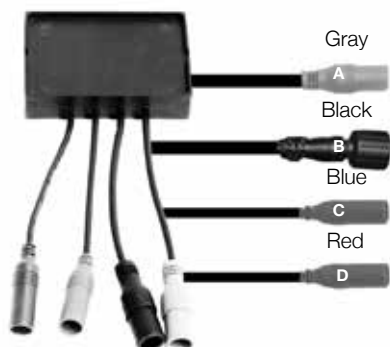


Step 4: Place the Battery inside of the compartment in front of the Connection Port.
(See illustration)

DO NOT PLACE BATTERY UPSIDE DOWN INSIDE OF BATTERY COMPARTMENT.



NOTE: USE CAUTION WHEN PLACING BATTERY INSIDE THE COMPARTMENT, DUE TO THE MANUFACTURING PROCESS THERE MIGHT BE SHARP EDGES.



Gray (Battery)
A
Black *
(Water Pump)
B
Blue
(ABCD Button)
C
Red
(LED Lights)
D



*** NOTE: The Connection of the Water Pump cable (black cable) screws together to ensure a tight & secure connection.**



Inserting The Battery Compartment Door

After you have connected the cables inside your fountain to the Rechargeable Battery, you should then place the Battery Compartment Door on the Base of the fountain.



Step 1: Start by lining up the notch in the bottom of the Battery Compartment Door with the notch in the bottom of the battery opening.



Step 2: Push the Battery Compartment Door in toward the Base. You will know it is in position when the magnet locks the door in place.



Once the door is in place, you may notice a small notch in the bottom left corner of the Battery Compartment Door. This is for the **optional** Bernini™ solar panel cord.



Removing The Battery Compartment Door



Step 1: Carefully disconnect the Battery Compartment Door from the Base by gently pulling outward from the top.



Step 2: Then, pull the Battery Compartment door up and out to remove from the Base.



DO NOT OVEREXTEND THE BATTERY COMPARTMENT DOOR BY PULLING DOWN!
This may cause damage to your new Bernini™ Fountain.



At this point, your fountain should look like the image on the left. Go to the next page for the next step to setup your new Bernini™ Fountain.



Step 5:

Water Spray Tip Alignment & Adjustment

You will need:



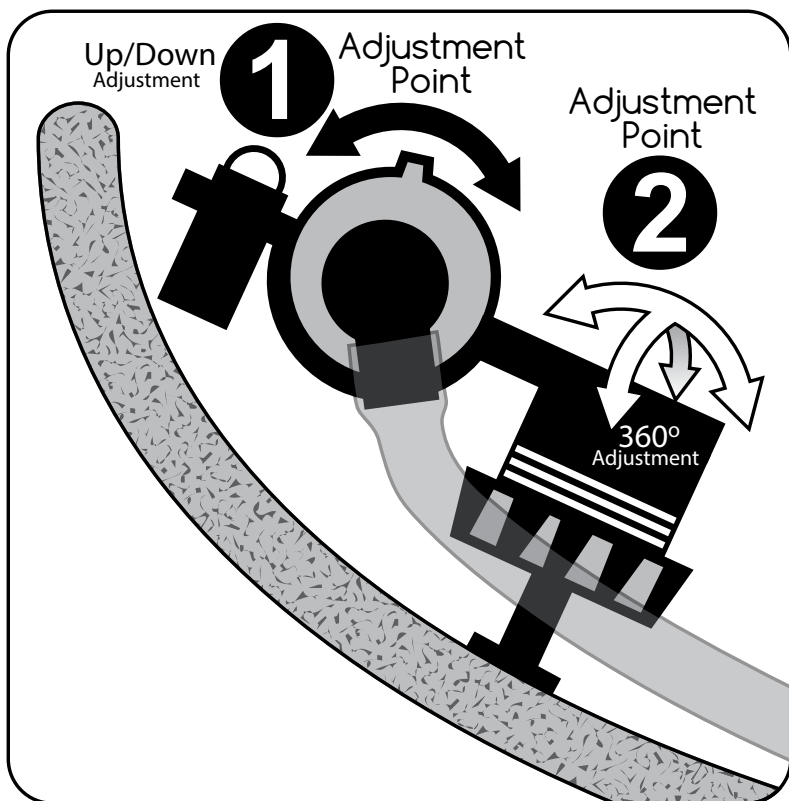
Fountain Assembled



Water Spray Tip Alignment & Adjustment

Next you will adjust the 4 water tips in the Large Bowl. If 1 or all the 4 water tips in the large bowl require adjustment please refer to the illustration below.

Adjustment Points



Adjustment 1: This adjustment will move the spray pattern up and down only.

Adjustment 2: This adjustment will move the spray pattern up and down or left and right.

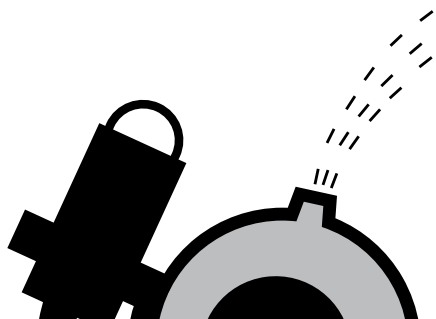
NOTE: The nut for adjustment point 2 comes from the factory pre-tightened for proper tension. However if you find that the adjustment tension has loosened , this nut can be tightened to achieve proper tension but do not overtightened or damaged may occur.



LED Light Adjustment

LED/Lights Adjusted

Correctly:
Water Spray
will Not Touch LED



LED/Lights Adjusted

Incorrectly:
Water Spray
Hits LED Light



Note: The illustration above shows the correct and incorrect adjustment of the Water Spray Nozzle. For proper operation of fountain adjust Water Spray Nozzle so spray will not contact LED lights.

CAUTION: Do not apply too much pressure to the LED Lights damage may occur to the LED mounting tabs.

Spray Nozzle Adjustment



Incorrect position of the Spray Nozzles.



Correct position of the water spray nozzles
The outer water spray should meet in the center of the bowl or finial and should not

Note: If the Spray Pattern is not correct follow the steps shown in the “Cleaning Out Spray Nozzle Plugs” section.



Step 6:

Fountain Startup

You will need:



Fountain Assembled



Prior To Startup:

After you have filled your fountain with water, hold both sides of the Large Bowl and quickly shake your fountain for ten seconds. This will dislodge any air bubbles that may be caught in your Water Pump. Press the A button once to turn your fountain on. Water should be flowing from the top of your fountain. If water is not flowing, press the A button once more to turn your fountain off, and repeat the step above.

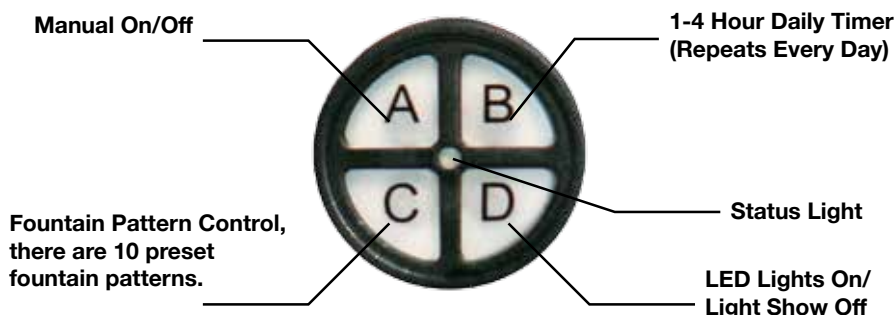
IF YOUR FOUNTAIN IS MAKING A LOUD NOISE, DON'T PANIC!

This just means that there are air bubbles stuck in the Water Pump. Your pump will not be harmed, and you can easily fix this issue. You can try priming the fountain again by repeating the steps above, however, if the problem still persists, you can find the solution in the "Priming The Water Pump" Section of this instruction manual.

Note: Your Water Spray Nozzles may not be aligned properly. To correct this, go to the "Water Spray Tip Alignment and Adjustment" section of this manual to adjust the Water Spray Nozzles.

Operating Your Fountain

The on-board control panel is located towards the top of the base, just below the Large Bowl. See the diagram below to see how the all-new on-board controls work for your Bernini™ Fountain.



Note: Unplugging & plugging your Battery will reset the fountain programs.



BUTTON	DESCRIPTION
A (Manual On /Off)	Turns the fountain on and off without any timer. Can be used when extended run times are desired. Note: Fountain will run until the battery loses its charge.
BUTTON	DESCRIPTION
B (1-4 Hour Daily Timer)	<p>One hour operation: press the B button once for your fountain to turn on with an automatic shut-off after one hour of operation. This will repeat daily at the same time each day.</p> <p>Two hour operation: press the B button twice and your fountain will automatically shut-off after two hours of operation and repeat daily at the same time.</p> <p>Three hour operation: press the B button three times and your fountain will automatically shut-off after three hours of operation and repeat daily at the same time.</p> <p>Four hour operation: press the B button four times and your fountain will automatically shut-off after four hours of operation and repeat daily at the same time.</p> <p>How To Use This Function:</p> <ol style="list-style-type: none"> 1. Select the amount of time you would like the fountain to run by pressing the B button one, two, three or four times. 2. Your fountain will then run for the selected amount of time and at the end of the selected duration it will automatically turn off. Then your fountain will automatically turn on at the same time the next day for the run time duration you selected. 3. If you turn the LED lights on while using the 1-4 Hour Daily Timer function, the lights will automatically turn on with your fountain and turn off at the end of the selected interval. <p>Example: If you turn on your fountain, choose a two hour run time by pressing the B button twice at 5pm, your fountain will turn off at 7pm and turn on again the next day at 5pm and run for two hours automatically.</p>
C (Fountain Pattern Control)	<p>Push the C button to scroll through the 10 different water show patterns.</p> <p>Example: If you want to set the pattern number 3 in your fountain just click the C button 3 times.</p>



BUTTON	DESCRIPTION
D (LED Lights On/ Light Show Off)	<p>LED light control:</p> <ol style="list-style-type: none"> 1. Press 1 time LED lights will come on 2. Pressing a second time turns on the LED light show (flashes in different light patterns matching the fountain water show patterns). 3. Press 3 times turns off LED Lights.
Status Light	Status light will blink for the number hours you have selected when using the timer function (button B).

Unplug your battery cable from the connection port and then reconnect it again, this will reset your programs. Then press the A Button once. Water should be coming out of the center water spout and the outer four water spray nozzles.

You can now try your Bernini™ Fountain to see if everything is working correctly! Turn your fountain on and you should see water flowing from the outlet in the middle of the Floral Plate.



Go to the next page to add the Bird Finial Decor top.

If water is not flowing, try priming the water pumps in the “Priming The Water Pumps” section of this instruction manual.



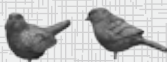
Step 7:

Installation Of The Dancing Water Attachment & Bird Finial

Choose your accent:



Bird Finial



Bird Attachments



Dancing Water
Attachment



Dancing Water Attachment Installation

Before installing The Dancing Water Attachment to your fountain, make sure that the Bird Finial is not attached.



Dancing Water Attachment



Step 1: Attach the Dancing Water Attachment to the water outlet in the center of the Floral Plate by pressing down onto the water pump tube.

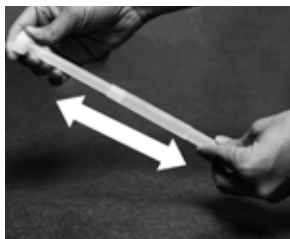


Enjoy your Dancing Water Attachment.

Warning: Dancing Water Attachment may cause water to splash slightly around your fountain. If using attachment, be sure to place your fountain accordingly as to not damage anything in the surrounding area..

NOTE: If the water spray nozzles need adjustment adjust the water spray nozzles according to the “Water Spray Tip Alignment and Adjustment” section of this manual.

Bird Finial Installation



Step 1: Remove the silicone ring from the top of the extension tube.

To install the Bird Finial you will need to use the clear extension tube included with your Bernini™ Fountain.

Before installing the extension tube, **pull the two ends of the extension tube apart to about 9 inches (22.8cm).**



Step 2: Attach the Extension Tube to the water pump tube outlet in the middle of the Floral Plate.

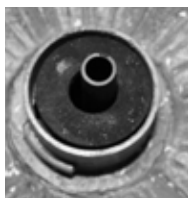


Step 3: Put the Finial over the Extension Tube. Be careful to keep the tube centered in the hole at the top of the Finial.

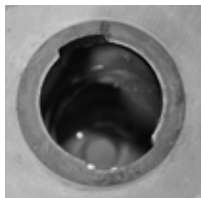
NOTE: If needed, use sand paper or file to take off any ridges of resin to allow tip to go through the hole Finial easily.



Locking System



**Top of
Floral Plate**



**Bottom of
Finial**



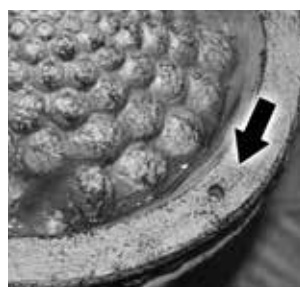
Step 4: The Finial locks into place using a key system in the middle of the Floral Plate. Align the bottom of the Finial to the top of the Floral Plate and twist the Finial a quarter turn clockwise to lock it into place.



Step 5: Place the silicone ring on to the extension tube.



Step 6: Press the extension tube down until it is level with the Finial.



Step 7: On the opposite sides on the top of the Finial there are 2 holes that the Bird Attachments fit into.



When you are done the Finial should look like the picture above.



At this point, your fountain should look like the image on the right. You are now finished installing the Bird Finial. Turn on your fountain and enjoy!



Troubleshooting and Maintenance

Cleaning Your Fountain

In order to keep your fountain in tip-top shape and free of algae, you should clean your fountain approximately every two months depending on your conditions. To clean your fountain, drain all water and disassemble. Use a mild soap and a soft cloth to clean the parts of your Bernini™ fountain. Your fountain Large Bowl will form a natural patina finish which with time may appear lighter or whiter than the original color. This is normal.

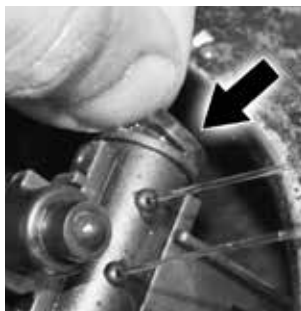
DO NOT SCRUB YOUR FOUNTAIN, AS THIS COULD CAUSE DAMAGE TO THE FINISH OF YOUR BERNINI™ FOUNTAIN.

Cleaning Out The Spray Nozzle Plugs

To clean the plugs follow these steps.



Step 1: Locate plug on the corner of the Spray Nozzle.



Step 2: While your fountain is running remove the plug from the Spray Nozzle Housing.



Step 3: After plug is removed water pressure may fall this is normal.



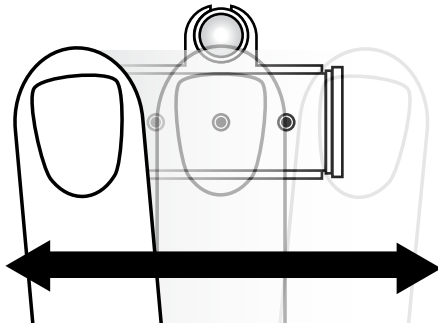
Step 4: Allow the water to run out of the Spray Nozzle housing flushing out any particles that may be clogging nozzles.



Reinstall rubber plug. Check for proper operation.



Cleaning The Spray Nozzles



Tip: If water spray is still not spraying properly try rubbing your finger over nozzles to clean off minor particles that may still be present.

Cleaning The Spray Nozzles Holes



Tip: Use a safety pen and carefully insert into holes of the Spray Nozzles.

Cleaning The Finial Drain Tubes



Tip: Use a small dowel, pipe cleaner or round file to clean the drain holes in the Finial if they become clogged.



Cold Storage

Drain the water from fountain prior to the first freeze of the season. Clean and dry the fountain of all water. Remove the Rechargeable Battery and bring it indoors. **Be sure to store the battery upright.** (Now is a great time to clean the pump to remove any debris that may have accumulated throughout the year. To clean the pumps refer to the "Cleaning The Water Pump" section in this instruction manual. Store in a warm dry area.

Recharging The Battery

The different programmable water and light shows will vary your run time per fully charged battery. The average run time is approximately 38 hours. However, pump setting which have the inner and outer pumps on full with steady streams plus the lights on will reduce the average run time by more than half. Whereas the setting with outer spray nozzles on running at half height with no lights will exceed 38 hours average run time.

If you connect your battery to the charger before you plug into your outlet, the chargers' light will glow a solid green to signify connection to the battery. Once plugged into the outlet, the light will glow a solid red until charged. Then it will turn green when fully charged.



Begin by disconnecting the battery from the Connection Port and remove from the base of your fountain.

Step 1: Plug the battery charger into an electrical wall outlet.



Step 2: Take the gray cord that is connected to your battery and plug it into battery charger cord. While the battery is charging, the light on the charger will be solid red, indicating the charger is charging your battery.



Step 3: Charge the battery for 12-14 hours. When the battery is reaching it's fully charged capacity, the light will blink for several minutes. Once the light is a solid green, the battery is at it's full charge. At this point, you can detach the battery from the charger and plug the battery into your fountain.

IMPORTANT

DO NOT CHARGE ON COUNTER TOPS, CARPETS OR OTHER FINISHED SURFACES. IT IS RECOMMENDED THAT THE BATTERY BE PLACED ON A CONCRETE OR SAFE SURFACE WHILE CHARGING.



Cleaning The Water Pumps'

Water Pump Filters

After about six weeks of usage, you may want to clean the water pump filter and impeller to keep your Bernini™ Fountain in tip-top shape. You will need to drain your fountain of all water prior to cleaning the water pumps' parts.



Begin by disconnecting the pump from the fountain tier.

Step 1: Remove the front of the water pump by holding the sides of the front panel and pull it off the unit.



Step 2: Pull the water pump filter from the front panel.

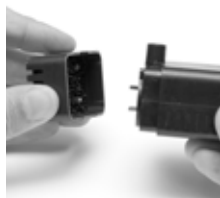


Step 3: Wash the filters under running water until debris has been removed. Then replace the filters and pump's front cover.

NOTE: An extra filter is included in case your water condition requires an extra fine filter. (For example if you find your spray nozzle tips clogging frequently)

Water Pump Impeller

The impeller inside of the water pump is what pushes water up through your fountain, allowing you to enjoy the soothing sounds and wonderful sights of your Bernini™ Fountain. After long periods of usage, this part will need to be cleaned to make sure your fountain runs optimally.



Step 1: Remove the front of the water pump by holding the sides of the front panel and pull it off the unit.

Note: The front of the water pump also house the water pump filter, if you need to clean the filter refer to the previous section.



Step 2: Remove the impeller chamber cover. This is tightly fitted on to the impeller chamber, but will come off.



Step 3: Remove the impeller from its chamber.



Step 4: Rinse the impeller until all debris has been removed. Then replace the impeller in the impeller chamber, put the impeller chamber back on and then replace the pump's front panel.

NOTE: Use this section to clean both water pumps in the Fountain Large Bowl.



Is your fountain making a loud noise or do you not see water flowing?

Try Priming the Water Pump

If you find the water pump is running, but water is not flowing from your fountain, or you hear a loud grinding noise coming from your fountain, not to worry, you can try priming the water pump:

Begin by turning your fountain off. Firmly grasp onto the two sides of the large bowl. Agitate the water by quickly shaking the fountain back and forth for about five seconds. Stabilize your fountain and press the A Button to turn your fountain on.



If the problem still persists, repeat previous step 2 - 3 times. This helps dislodge any air bubbles in your pump that may be causing the problem.

If the problem still persists, try the method below:

Before beginning if installed, remove the Bird Finial from the Floral Plate.

Remove the Floral Plate by lifting the Floral Plate off and place it in a safe place.

Next detach the water pump tube that protrudes through the Floral Plate.



Step 1: Submerge the water pump into the water inside the large bowl and lightly shake the pump underwater to release air bubbles inside the vents on the water pump.



Step 2: Turn the fountain on and you should see water flowing from the pump. Let the pump run for about ten seconds and then turn your fountain off.

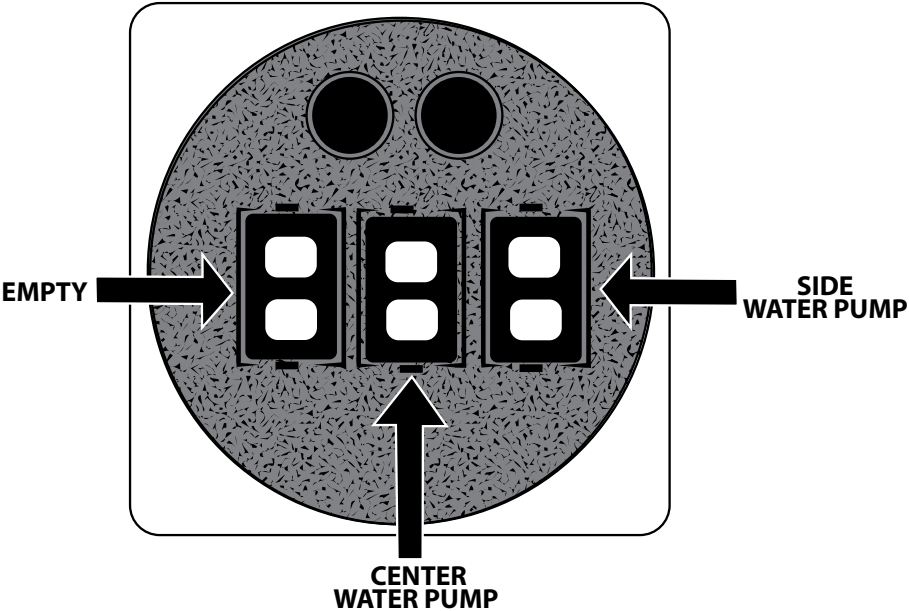


Step 3: Reconnect the water pump tube to the center water pump. After this you can position the Floral Plate in place.

Note: If you need to remove air for the side water pump remove the four tube connector from the pump and repeat the steps above.



Water Pump Tray



Water Pump Tray Illustration #1

Water Pump Electrical Connectors

The pump cables in the Large Bowl come pre-assembled. If for any reason they are disconnected, reassemble as follows.

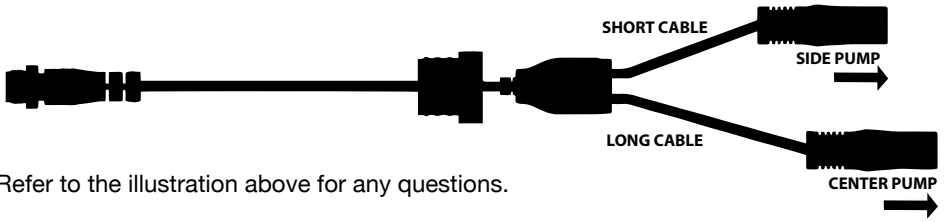
NOTE: Before reconnecting the cables make sure to drain water to prevent water from entering into the sealed cable connection in the Large Bowl. After reconnecting cables water can be added to the cable bowl.



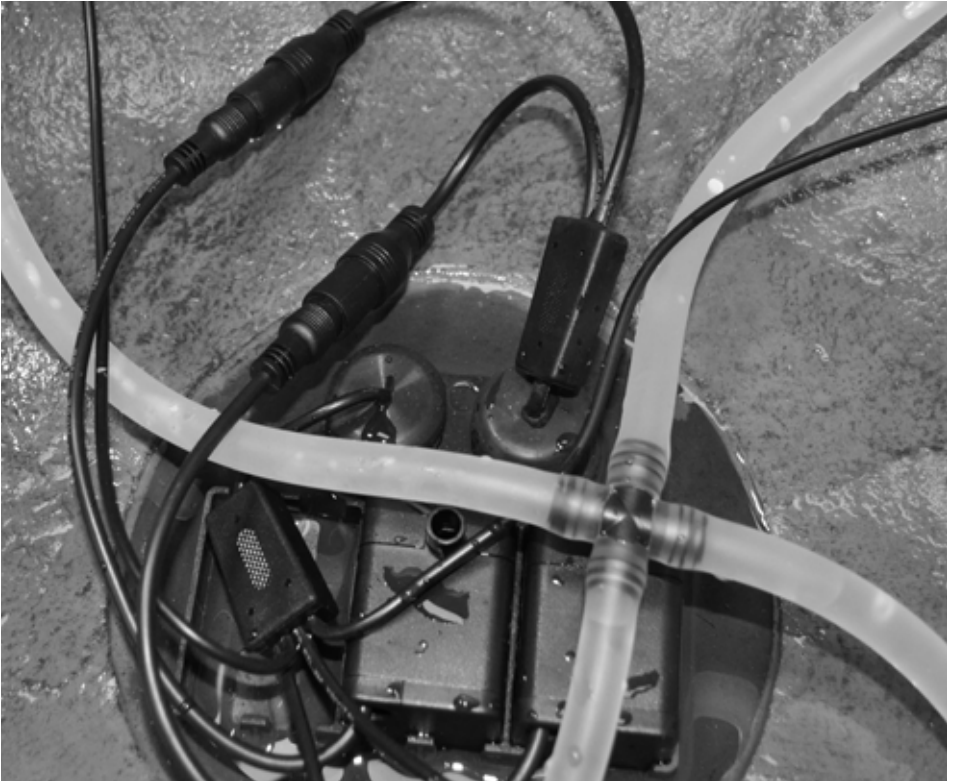
Step 1: Connect the longer cord to the center pump and the shorter cord to the side pump.



EMPTY



Refer to the illustration above for any questions.



Step 2: This is how the two connectors should look.

NOTE: Ensure all connections are tight.

Note: The 2 water pump connections will be under water during operation and it is important to ensure that the connections are firmly pressed together to prevent corrosion by water entering the connections.



Using Leveling Shims

If you are having trouble getting water to flow evenly off of the spouts on your Bernini™ Fountain, you may need to level the surface that your fountain is placed on. With the included leveling shims, you do not need to move your fountain, just follow the instructions below to get even water flow.



Place the shim underneath the base on the opposite side that is not flowing as strongly as the other sides.



Grasp the shim and break it on the crease closest to the end of the base.



Once the shim is broken, it will be hidden but will level your fountain.

Weighing Down Your Fountain

Do you happen to live in an area with strong winds? You can keep your fountain standing strong by adding weight to the bottom chamber of the base.

Simply add several scoops of sand to the chamber in the bottom of the base. Even with sand added to the base, the battery can safely sit atop the platform in the middle of the base's chamber.

Water Pump Connection

If your Bernini™ Fountain did not come with the outside water pump already connected to the 4 way connection port inside of the large bowl or if the water pump gets disconnected, use these instructions to reconnect your water pump.



Before beginning, remove the Bird Finial that may be installed on the fountain.

Step 1: Unlock the Bird Finial by turning it a quarter turn counter clockwise.



Step 2: Refer to the Water pump Tray illustration on the previous page and find the Side Water Pump in the Large Bowl.



Step 3: Ensure The Water pump is seated into the Water Pump Tray. Then reconnect the 4 way connector port to the outlet of the Water Pump.



BERNINITM

F O U N T A I N S

LIMITED ONE YEAR WARRANTY

This product has a one year limited warranty on all materials and workmanship. Bernini warrants the original purchaser of this product that the product will be free from manufacturing defects in workmanship and material for a period of one (1) year from the date of original purchase. If within one (1) year this product fails due to defect in material or workmanship, Bernini will repair, replace or supply any defective part at their option. The purchaser must contact Bernini and provide a description of the defective part, including digital pictures if requested, with this original purchase documentation as validation of warranty coverage. This warranty gives you specific legal rights and you may also have other rights which varies from state to state.

This warranty does not cover or apply to: (a) damage to the product due to misuse, mishandling, and abuse, (b) products not used in accordance with instructions, (c) product not assembled or installed according to instructions, and (d) normal wear and tear.

Call us for assistance at 1-619-449-2392 or you can email us at:
customer care@berninifountains.com

Our Customer Care Department is available:
Monday - Friday 8:30am to 4:00pm PST / 11:30am - 7:00pm EST

IMPORTANT BATTERY SAFETY INSTRUCTIONS

DANGER: Do not store battery in an airtight container as it may cause an explosion.

PROPOSITION 65 WARNING: Battery posts, terminals and related accessories contain lead and lead compounds, chemicals known to the State of California to cause cancer and reproductive harm. Wash hands after handling.

WARNING: When using electric devices, basic safety precautions should always be followed to reduce the risk of fire, electric shock and personal injury, including the following:

WARNING:

1. Do not incinerate the battery even if it is severely damaged or is completely worn out. The battery can explode in a fire. Check with municipal codes in your area for possible special disposal instructions.
2. If liquid leaks from the battery cell, discontinue use immediately and dispose of properly.
3. Do not charge battery in rain or in wet location.
4. Never attempt to open the battery for any reason. If the plastic housing of the battery breaks or cracks, immediately discontinue use and do not recharge. If the battery appears to be dusty or dirty, wipe it off with a soft cloth.
5. Use only the included battery. Contact our customer care line for a replacement at 888-648-2011.
6. Do not attempt to disassemble, remodel or destroy the battery, as it may cause battery leakage, fire, or bursting; and could also create sulfuric acid spills from the battery resulting in possible burns to person and damage to the immediate environment.
7. Exercise care in handling batteries in order not to short the battery with conducting materials such as rings, bracelets or keys. The battery or conductor may overheat and cause burns.
8. The battery contains diluted sulfuric acid, a very toxic substance. If the battery leaks and the liquid inside spills on the skin or clothing, immediately wash it off with plenty of clean water. If the liquid splashes into eyes, immediately flush the eyes with plenty of clean water and consult a doctor. Sulfuric acid in the eyes may cause loss of eyesight and acid on the skin will cause burns.
9. Charge battery using the specified charger and under the charging conditions as specified. Charging the battery under any other conditions may cause the battery to overheat, emit hydrogen gas, leak, ignite or burst.
10. When this product is not used for 30 days or more, remove the battery from the fountain, charge it fully and store in a place where humidity is low. Do not store the battery under direct sunlight or in high temperatures. Unsatisfactory storage conditions may cause deterioration in battery performance, and may shorten the service life.
11. When charging the battery always do so in a well ventilated area and where you can observe the charging process.
12. Never dispose of batteries in the garbage. Disposal of batteries in the garbage is unlawful under state and federal environmental laws and regulations. Always take used batteries to your local battery-recycling center.
13. **DO NOT CHARGE ON COUNTER TOPS, CARPETS OR OTHER FINISHED SURFACES. IT IS RECOMMENDED THAT THE BATTERY BE PLACED ON A CONCRETE SURFACE WHILE CHARGING.**

This device complies with Part 15 of the FCC Rules. Operation is subject to the following two conditions: (1) this device may not cause harmful interference, and (2) this device must accept any interference received, including interference that may cause undesired operation.

WARNING: Changes or modifications to this unit not expressly approved by the party responsible for compliance could void the user's authority to operate the equipment."

NOTE: This equipment has been tested and found to comply with the limits for a Class B digital device, pursuant to Part 15 of the FCC Rules. These limits are designed to provide reasonable protection against harmful interference in a residential installation. This equipment generates, uses and can radiate radio frequency energy and, if not installed and used in accordance with the instructions, may cause harmful interference to radio communications.

However, there is no guarantee that interference will not occur in a particular installation. If this equipment does cause harmful interference to radio or television reception, which can be determined by turning the equipment off and on, the user is encouraged to try to correct the interference by one or more of the following measures:

- Reorient or relocate the receiving antenna.
- Increase the separation between the equipment and receiver.
- Connect the equipment into an outlet on a circuit different from that to which the receiver is connected.

Consult the dealer or an experienced radio/TV technician for help.



BERNINITM
F O U N T A I N S

Santee, California 92071

World Wide Patents Pending

Email: customercare@berninifountains.com

On the web: www.berninifountains.com

Facebook: [berninifountains](https://www.facebook.com/berninifountains) Twitter: @yrdllc

© Yeiser Research & Development, LLC; 2016. All rights reserved.

Made in China

001070 BBF rev 2a us