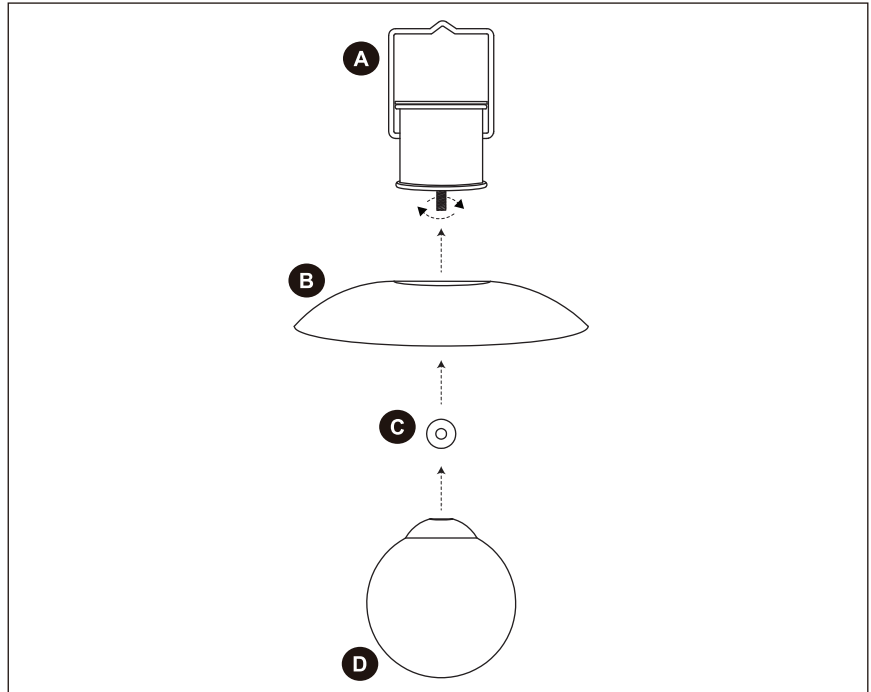


SOLAR LANTERN INSTRUCTIONS

Assembly Instructions:

A		1 PC
B		1 PC
C		1 PC
D		1 PC



Instructions:

- To use, turn the on/off switch to the on position
- For best results, allow to charge in direct sunlight for a minimum of 8 hours
- After fully charged, product will automatically light at night
- To extend battery life, turn to the off position when not in use

Trouble Shooting Tips:

If your solar light does not turn on at night, it may be caused by the following:

- The switch is in the "OFF" position. Push the switch to the "ON" position and allow the solar light to be charged for at least 8 hours under direct sunlight.
- Battery is not fully charged. Make sure the solar light is placed in an area where the solar panel receives the maximum amount of full direct sunlight everyday.
- The solar light is located too close to other light sources (such as porch light or street lantern). Relocate away from external light source.
- The rechargeable battery may need to be replaced - replace with batteries of identical specification.

CAUTION: Do not dispose of batteries in fire.

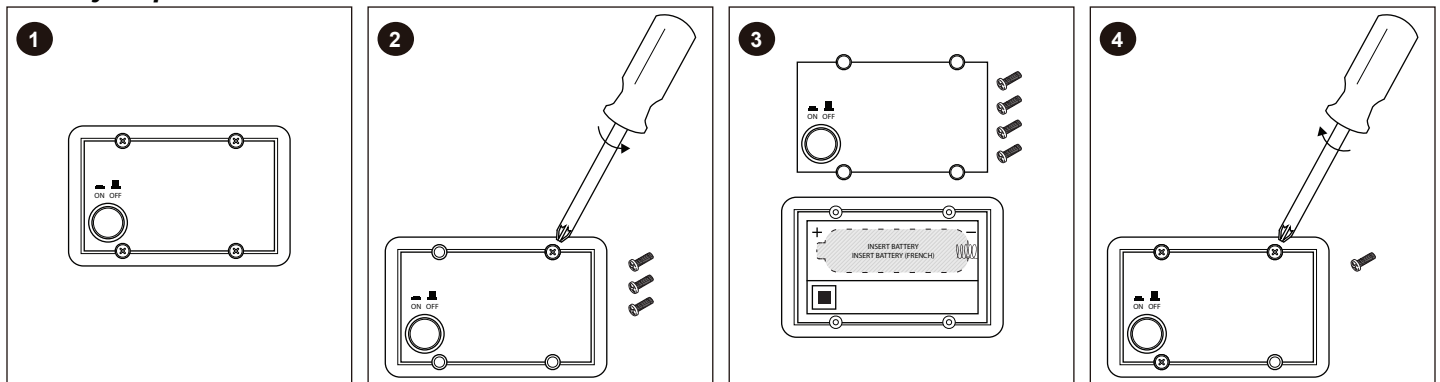
CAUTION: Batteries should be recycled or disposed of as per State and local guidelines.

CAUTION: The capacity of the battery, when replaced, shall not be less than 300mAh.

CAUTION: Use rechargeable battery only.

CAUTION: Do not ingest battery.

Battery Replacement



** Battery type specified inside battery box. Replace with battery of identical specification. **