

# NINJA®

BL487Q Series  
OWNER'S GUIDE



[www.ninjakitchen.com](http://www.ninjakitchen.com)

# IMPORTANT SAFETY INSTRUCTIONS

## For Household Use Only

WHEN USING ELECTRICAL APPLIANCES, BASIC SAFETY PRECAUTIONS SHOULD ALWAYS BE FOLLOWED, INCLUDING THE FOLLOWING:

READ ALL INSTRUCTIONS BEFORE USING YOUR NUTRI NINJA® AUTO-iQ™ PRO COMPLETE.

### POLARIZED PLUG

**⚠ WARNING:** To reduce the risk of electric shock, this appliance has a polarized plug (one blade is wider than the other). This plug will fit into a polarized outlet only one way. If the plug does not fit fully into the outlet, reverse the plug. If it still does not fit, contact a qualified electrician to install the proper outlet. DO NOT modify the plug in any way.

**⚠ WARNING:** Extension cords are not recommended for use with this product.

**⚠ WARNING:** TO REDUCE THE RISK OF FIRE, ELECTRIC SHOCK OR INJURY:

- 1 ⚠ WARNING:** Never leave the appliance unattended while in use.
- 2 ⚠ WARNING:** Remove utensils prior to processing. Failure to remove may cause the jar to be damaged or to shatter which may cause personal injury.
- 3 ⚠ WARNING:** Pro Extractor Blades® Assembly is sharp, handle with care. When handling the blade assembly, always hold them by the base of the blade assembly
- 4 ⚠ CAUTION:** Do not blend hot liquids, doing so may cause excessive pressure buildup, resulting in risk of the user being burned.
- 5 ⚠ CAUTION:** DO NOT process dry ingredients without adding liquid to the cup. This product is not intended for dry blending.
- 6 ⚠ CAUTION:** Remove the Pro Extractor Blades Assembly from the cup upon completion of blending. Some ingredients have the potential to expand after blending resulting in excessive pressure buildup that can pose a risk of injury.
- 7 ⚠ CAUTION:** Never attempt to remove the cups while the appliance is still running.
- 8 IMPORTANT:** Do not attempt to operate the container without the lid on.
- 9 IMPORTANT:** Never run the appliance empty.
- 10 IMPORTANT:** Make sure that the motor base is plugged in for use.
- 11 IMPORTANT:** Make sure that the motor base is unplugged when not in use.

**12** To protect against electrical shock, do not submerge the appliance or allow the power cord to come into contact with water or any other liquid.

**13** DO NOT allow the appliance to be used by children. Close attention is necessary when used near children. This is not a toy.

**14** Never leave the appliance unattended when in use.

**15** Remove the power cord from the electrical outlet when not in use, before disassembling parts, and before cleaning. To unplug, grasp the plug and pull from the electrical outlet. Never pull from the power cord.

**16** DO NOT abuse the power cord. Never carry the appliance by the power cord or yank it to disconnect from the electrical outlet; to unplug, grasp the plug, not the cord.

**17** DO NOT operate any appliance with a damaged cord or plug, after the appliance malfunctions, or after it has been dropped or damaged in any manner. Return the appliance to SharkNinja Operating LLC for examination, repair or adjustment.

**18** DO NOT let the power cord hang over the edge of a table or counter or touch hot surfaces such as the stove.

**19** Always use the appliance on a dry, level surface. Make sure the suction-cup feet are wiped clean and no crumbs or residue are on the bottom of them.

**20** Keep hands, hair, clothing, and utensils out of container while processing to reduce the risk of severe injury to persons or damage to the appliance. A scraper may be used ONLY when the appliance is not running.

**21** Avoid contact with moving parts.

**22** DO NOT attempt to sharpen blade assemblies.

**23** DO NOT use the appliance if the blade assembly is bent or damaged.

**24** To reduce risk of injury, never place the blade assembly on the motor base without the proper container.

**25** DO NOT operate this appliance on or near any hot surfaces (such as on a gas or electric burner or in a heated oven).

**26** The use of attachments or accessories (including canning jars), that are not recommended or sold by the manufacturer may cause fire, electric shock, or personal injury.

**27** DO NOT remove the cup from the motor base while the appliance is running.

**28** To reduce the risk of injury, NEVER operate the appliance without the blade assembly installed in a container. DO NOT try to defeat the interlock mechanism; make sure the blade is properly installed before operating the appliance.

**29** DO NOT expose cups to extreme temperature changes.

**30** DO NOT overfill.

**31** If the appliance overheats, a thermal switch will activate and shut off the motor. To reset, unplug the appliance and let cool down for approximately 30 minutes before using again.

**32** This product is intended for household use only. DO NOT use this appliance for anything other than its intended use. DO NOT use outdoors.

**33** Appliance accessories are NOT intended to be used in the microwave. DO NOT place the cups in the microwave as it may result in damage to the accessories.

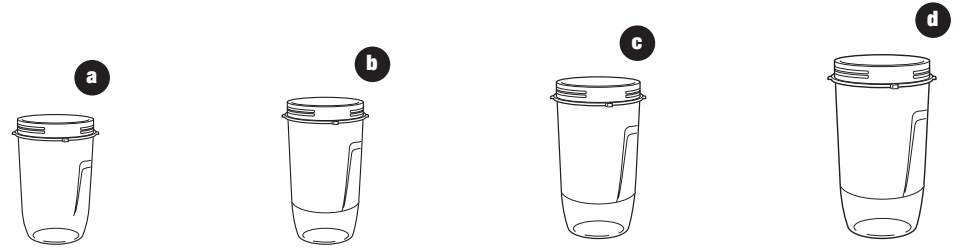
## SAVE THESE INSTRUCTIONS

## Contents

**Thank you for purchasing the Nutri Ninja® Auto-iQ™ Pro Complete.**

Getting to Know Your Nutri Ninja® Auto-iQ™ Pro Complete .....	4
Features .....	5
Before First Use .....	6
Use .....	7
Care & Maintenance .....	8
Troubleshooting Guide.....	9
Warranty & Registration.....	10

## Getting To Know Your Nutri Ninja® Auto-iQ™ Pro Complete



- a** 12 oz. Nutri Ninja Cup
- b** 18 oz. Nutri Ninja Cup
- c** 24 oz. Nutri Ninja Cup
- d** 32 oz. Nutri Ninja Cup

- e** Sip & Seal® Lid
- f** Pro Extractor Blades® Assembly
- g** Shaker Lid
- h** Motor Base

### THIS BOOK COVERS MODEL NUMBER:

BL487QH  
BL487QPL  
BL487QPM  
BL487QVR  
BL487QSB  
BL487QWB

### TECHNICAL SPECIFICATIONS

Voltage: 120V., 60Hz.  
Power: 1100 Watts

### Nutri Ninja® Cup Capacity:

12 oz. (1.5 cups, 350 ml)  
18 oz. (2.25 cups, 530 ml)  
24 oz. (3 cups, 710 ml)  
32 oz. (4 cups, 950 ml)

## Features

- Nutrient & Vitamin Extraction†
- 1100 Watt Motor
- User Interface:

### Start/Stop

Start/Stop is a manual setting that runs at High speed for 60 seconds. This button can be pressed at any time if you wish to stop a program.

### Smooth Boost™

SMOOTH BOOST YES/NO is a special feature available when using the Auto-iQ™ EXTRACT and Auto-iQ BLEND. This setting can be used to control the consistency of your beverage recipes. Select SMOOTH BOOST YES when smoother, creamier results are desired. This is the default program for both Auto-iQ EXTRACT and Auto-iQ BLEND programs. Select SMOOTH BOOST NO when more of a textured consistency is desired.

### Pulse

Offers greater control to help prevent over-processing or over-blending. Simply hold down the button and our Pro Extractor Blades® Assembly will run at a high speed for a quick burst of power to break through ice or chop vegetables.

### AUTO-IQ EXTRACT†

EXTRACT should be used when blending hard, leafy, or fibrous whole fruits and vegetables, including apples, kale, and celery. This optimized program allows you to blend fresh items with their skins, seeds, and stems into nutrient extractions. Before using EXTRACT, select Smooth Boost YES or NO depending on your desired consistency.

### AUTO-IQ BLEND

BLEND can be used to make a range of beverages that do not include hard or fibrous fresh ingredients, such as milkshakes, protein smoothies, soft fresh-fruit smoothies, and frozen cocktails. Before using BLEND, select SMOOTH BOOST YES or NO depending on your desired consistency.

- Sip & Seal® lids for drinks on the go.
- Nutri Ninja® Cups and Sip & Seal lids, are BPA free, and dishwasher safe.
- Cord Wrap located on back of the motor base.

### Ice to Snow

Crushing Ice to Snow is easy – take ice cubes directly from your freezer, and put in a dry Ninja® Cup – use the pulse feature in short quick bursts until it's in snow like consistency.

†Extract a drink containing vitamins and nutrients from fruits and vegetables.

## Before First Use

### PLEASE KEEP THESE IMPORTANT SAFEGUARDS IN MIND WHEN USING THE APPLIANCE:

- ⚠ **WARNING: Remove utensils prior to processing. Failure to remove may cause the bowl to be damaged or to shatter, which may cause personal injury.**
- ⚠ **WARNING: Never leave the appliance unattended while in use.**
- ⚠ **CAUTION: Do not blend hot liquids, doing so may cause excessive pressure buildup, resulting in risk of the user being burned.**
- ⚠ **WARNING: Blades are sharp! Use extreme caution when handling the Pro Extractor Blades® Assembly. Always hold them by the base of the blade assembly.**
- ⚠ **CAUTION: Never attempt to remove the cup while the appliance is still running.**

**IMPORTANT: Attachments are interchangeable.**

**IMPORTANT: Never run the appliance empty.**

**IMPORTANT: Appliance accessories are not intended to be used in the microwave as it may result in damage to the accessories.**

- 1 Remove all packaging material and labels from the appliance.
- 2 Wash the lids, cups, and Pro Extractor Blades® Assembly in warm, soapy water with a soft cloth.
- 3 Rinse and dry thoroughly.
- 4 Lids, cups, and Pro Extractor Blades Assembly are all dishwasher safe. It is recommended that the lids and attachments be placed on the top rack. Ensure that the Pro Extractor Blades Assembly are removed from the cups before placing in the dishwasher.
- 5 Wipe the motor base clean with a damp cloth.

## Use

- ⚠ **WARNING:** Never leave the appliance unattended while in use.
  - ⚠ **WARNING:** Remove utensils prior to processing. Failure to remove may cause the bowl to be damaged or to shatter, which may cause personal injury.
  - ⚠ **WARNING:** Use caution when handling the Pro Extractor Blades® Assembly as the blades are sharp.
  - ⚠ **CAUTION:** Do not blend hot liquids, doing so may cause excessive pressure buildup, resulting in risk of the user being burned.
- IMPORTANT:** Make sure that the motor base is plugged in for use.

### ASSEMBLY

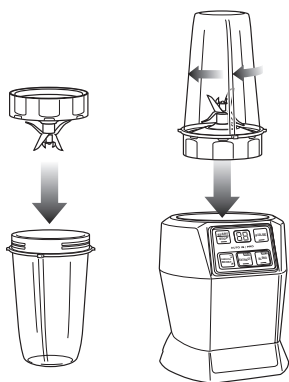


Fig. 1

- 1 Place the motor base on a clean, dry, level surface such as a counter or tabletop. Press down on the motor base to make sure the suction cups adhere to the counter or tabletop.
- 2 Add ingredients to the Nutri Ninja cup.
- 3 Place the Pro Extractor Blades Assembly onto the cup and tightly screw on clockwise (**Fig. 1**) until you have a good seal.
- 4 Turn the Nutri Ninja cup upside down and place it onto the motor base (**Fig. 2**), aligning the tabs on the cup with the motor base. Rotate the Nutri Ninja cup clockwise until it locks in place (you will hear a click when the lock is engaged).
- 5 Once the cup is engaged, the programs available for that attachment will illuminate. Select the program (**Fig. 3**) desired based on your recipe. The Auto-iQ program will stop the appliance automatically at the end of the program.

### USE

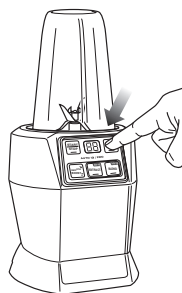


Fig. 3

- 6 To pause the program, press the selected speed or Auto-iQ Program a second time.
  - 7 Once you have reached your desired consistency, press the Power button to turn the program off. Turn the Nutri Ninja cup counter-clockwise (**Fig. 4**) and pull straight up to remove (**Fig. 5**).
  - 8 Turn the cup upright and remove the Pro Extractor Blades Assembly by twisting the Pro Extractor Blades Assembly counter-clockwise.
  - 9 Place the Sip & Seal® lid onto the Nutri Ninja cup, twist to seal, and enjoy!
  - 10 To remove the motor base unit, tip the unit forward from the rear to easily disengage the suction cups.
- NOTE:** Ninja® Auto-iQ™ Technology can sense which container is on the motor base. The function lights will illuminate depending on which Nutri Ninja Cup is placed on the motor base.

### REMOVAL

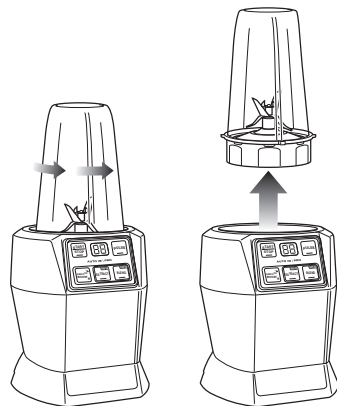


Fig. 4

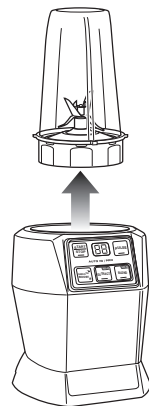


Fig. 5

## Care & Maintenance

### CLEANING

- ⚠ **CAUTION:** MAKE SURE THE MOTOR BASE IS UNPLUGGED FROM THE POWER SOURCE BEFORE INSERTING OR REMOVING ANY ATTACHMENT AND BEFORE CLEANING.
- ⚠ **CAUTION:** DO NOT IMMERSE THE MOTOR BASE INTO WATER OR ANY OTHER LIQUID.
- ⚠ **WARNING:** HANDLE PRO EXTRACTOR BLADES® ASSEMBLY CAREFULLY AS THE BLADES SHARP.

- 1 Separate/remove all parts from each other.
- 2 Clean the motor base with a damp cloth and wipe dry.
- 3 Place the cups, lids and Pro Extractor Blades Assembly in the top rack of the dishwasher.

OR

- 4 Carefully hand wash the cups, lids and the Pro Extractor Blades Assembly in warm, soapy water with a soft cloth.

**NOTE:** If the appliance needs servicing, please call Customer Service at 1-877-646-5288.

### STORING

- 1 Store the Ninja Auto-iQ Pro Complete upright. Secure the power cord on the back of the base by wrapping the cord around the cord wrap. Do not place anything on top of the unit. Store the cups and the rest of the attachments where they will not be damaged and won't cause a hazard.

### RESETTING THE MOTOR THERMOSTAT

The Ninja Auto-iQ Pro Complete features a unique safety system that prevents damage to the unit's motor and drive system should you inadvertently overload the appliance. If the appliance is overloaded, the motor will stop. To reset the appliance, follow the resetting procedure below:

- 1 Unplug the appliance from the electrical outlet.
- 2 Remove and empty the cup and ensure that no food is jamming the Pro Extractor Blades Assembly.
- 3 Allow the appliance to cool for approximately 30 minutes.
- 4 Re-install the cup onto the motor base and re-plug the appliance into the electrical outlet.
- 5 Proceed with using the appliance as before while making sure not to exceed the maximum recommended capacities.

**ONE (1) YEAR LIMITED WARRANTY**

PROBLEMS	POSSIBLE REASONS & SOLUTIONS
<b>Unit doesn't turn on</b>	<ul style="list-style-type: none"> <li>• Make sure the unit is plugged in and the POWER button is pressed.</li> <li>• Insert and rotate cup clockwise in the base until it clicks into place. Display should turn on.</li> </ul>
<b>Unit doesn't turn off</b>	<ul style="list-style-type: none"> <li>• Remove cup from base by rotating cup counter-clockwise and lifting out. Display should turn off. Unplug the power cord from the outlet.</li> </ul>
<b>Lid/Pro Extractor Blades® Assembly hard to assemble:</b>	<ul style="list-style-type: none"> <li>• Set the cup on a level surface. Place the lid or blade assembly on the top of the cup and align the threads so that the lid/Pro Extractor Blades Assembly sit flat on the cup. Twist clockwise so that the lid/blades evenly align to the cup until you have a tight seal.</li> </ul>
<b>Doesn't mix well, food gets stuck.</b>	<ul style="list-style-type: none"> <li>• Using the Auto-iQ programs is the easiest way to achieve great results. The pulses and pauses allow the food to settle toward the blade. If food is routinely getting stuck, adding some liquid will usually help.</li> <li>• When packing the cups, start with fresh items, then add liquids, powders/dry ingredients, and finally frozen items or ice.</li> </ul>
<b>Unit moves on counter while blending</b>	<ul style="list-style-type: none"> <li>• Make sure the surface as well as the feet of the unit are clean and dry.</li> </ul>
<b>Unit is difficult to remove from counter for storage</b>	<ul style="list-style-type: none"> <li>• To release the motor base from the counter or tabletop, place your hands underneath both sides of the motor base and gently pull the unit up and toward you.</li> </ul>
<b>Display shows "--":</b>	<ul style="list-style-type: none"> <li>• Unplug unit and wait 30 minutes before running any program.</li> </ul>

**SharkNinja Operating LLC** warrants this product to be free from material defects and workmanship for a period of one (1) year from the date of purchase when utilized for normal household use, subject to the following conditions, exclusions and exceptions.

The liability of **SharkNinja Operating LLC** is limited solely to the cost of the repair or replacement of the unit at our option. This Limited Warranty does not cover normal wear of parts and does not apply to any unit that has been tampered with or used for commercial purposes. This Limited Warranty does not cover damage caused by misuse, abuse, negligent handling or damage due to faulty packaging or mishandling in transit. This Limited Warranty does not cover damage or defects caused by or resulting from damages from shipping or repairs, service or alteration to the product or any of its parts, which have been performed by a repair person not authorized by **SharkNinja Operating LLC**.

If your appliance fails to operate properly while in use under normal household conditions within the warranty period, return the complete appliance and accessories, freight prepaid. For assistance with warranty service options or customer support, please call our customer care and product specialists at , call 1-877-646-5288 or visit our website [www.ninjakitchen.com](http://www.ninjakitchen.com).

If the appliance is found to be defective in material or workmanship, **SharkNinja Operating LLC** will repair or replace it free of charge. Proof of purchase is required and a fee of \$19.95 will apply to cover the cost of return freight. \*

This Limited Warranty is extended to the original purchaser of the unit and excludes all other legal, implied and/or conventional warranties. The responsibility of **SharkNinja Operating LLC** if any, is limited to the specific obligations expressly assumed by it under the terms of this Limited Warranty. In no event is **SharkNinja Operating LLC** liable for incidental or consequential damages to anyone of any nature whatsoever. Some states do not permit the exclusion or limitation of incidental or consequential damages, so the above may not apply to you.

This Limited Warranty gives you specific legal rights, and you may also have other rights which vary from state to state or from province to province.

**\*IMPORTANT: Carefully pack item to avoid damage in shipping. Be sure to include proof of purchase date and to attach tag to item before packing with your name, complete address and phone number with a note giving purchase information, model number and what you believe is the problem with the item. We recommend you insure the package (as damage in shipping is not covered by your Limited Warranty). Mark the outside of your package "ATTENTION CUSTOMER SERVICE".**

**Product Registration**

Please visit [www.ninjakitchen.com](http://www.ninjakitchen.com) or call 1-877-646-5288 to register your new Ninja® product within ten (10) days of purchase. You will be asked to provide the store name, date of purchase and model number along with your name and address.

The registration will enable us to contact you in the unlikely event of a product safety notification. By registering you acknowledge to have read and understood the instructions for use, and warnings set forth in the accompanying instructions.

SharkNinja Operating LLC

US: Newton, MA 02459

CAN: Ville St-Laurent, QC H4S 1A7

1-877-646-5288

[www.ninjakitchen.com](http://www.ninjakitchen.com)

Copyright © 2015 SharkNinja Operating LLC

**Ninja, Nutri Ninja, Pro Extractor Blades** and **Sip & Seal** are registered trademarks of SharkNinja Operating LLC.

**AUTO-iQ** and **Smooth Boost** are trademarks of SharkNinja Operating LLC.

Illustrations may differ from actual product. We are constantly striving to improve our products, therefore the specifications contained herein are subject to change without notice.

For Shark Ninja U.S. Patent information visit [www.sharkninja.com/USPatents](http://www.sharkninja.com/USPatents)

Printed in China

BL487Q\_Series\_IB\_151104\_2