

NUTRI NINJA®

2-in-1

QB3000 series
OWNER'S GUIDE



www.ninjakitchen.com

IMPORTANT SAFETY INSTRUCTIONS

For Household Use Only

WHEN USING ELECTRICAL APPLIANCES, BASIC SAFETY PRECAUTIONS SHOULD ALWAYS BE FOLLOWED, INCLUDING THE FOLLOWING:

READ ALL INSTRUCTIONS BEFORE USING YOUR NUTRI NINJA® 2-in-1.

POLARIZED PLUG

WARNING: To reduce the risk of electric shock, this appliance has a polarized plug (one blade is wider than the other). This plug will fit into a polarized outlet only one way. If the plug does not fit fully into the outlet, reverse the plug. If it still does not fit, contact a qualified electrician to install the proper outlet. **DO NOT** modify the plug in any way.

WARNING:

TO REDUCE THE RISK OF FIRE, ELECTRIC SHOCK OR INJURY:

- 1** To protect against electric shock, **DO NOT** immerse cord, plug or any part of the main unit in water or any other liquids.
- 2** Close supervision is necessary when any appliance is used by or near children.
- 3 DO NOT** let cord hang over edge of table or counter, or touch hot surfaces including the stove.
- 4** Never leave an appliance unattended when in use.
- 5 DO NOT** operate any appliance with a damaged cord or plug, or after the appliance malfunctions, has been dropped or damaged in any manner. Return the appliance to EURO-PRO Operating LLC for examination, repair or adjustment.
- 6 DO NOT** abuse the power cord. Never carry the appliance by the power cord or yank it to disconnect from electrical outlet; instead grasp the plug and pull to disconnect.
- 7** Unplug appliance from outlet when not in use, before putting on or taking off parts and before cleaning.
- 8 DO NOT** operate this appliance on or near any hot surfaces (such as gas or electric burner, or in a heated oven).



- 9** The use of accessory attachments, including canning jars is not recommended by EURO-PRO Operating LLC and may cause fire, electrical shock or risk of personal injury.
- 10** Always use this appliance on a dry, stable work surface away from water.
- 11** **DO NOT** remove the Power Pod or the Geared Lid before the blades have stopped turning.
- 12** **CAUTION: Blade assembly is sharp. Handle with care. When handling the blade assembly, always hold by the upper shaft.**
- 13** **DO NOT attempt to sharpen blades.**
- 14** **DO NOT** block the vents on the Power Pod when using the appliance.
- 15** Make sure that the Geared Lid is securely locked in place before operating the appliance.
- 16** When making dough in the processor bowl, **DO NOT** operate the Power Pod continuously for more than 30 seconds.
- 17** **CAUTION: DO NOT** use more than 2 cups of flour maximum when making dough.
- 18** **DO NOT** expose jars to extreme temperature changes.
- 19** **DO NOT** use jars if they are cracked or chipped.
- 20** **DO NOT** use the appliance if blades are bent or damaged.
- 21** Avoid contact with moving parts at all times. Keep hands, hair, clothing as well as spatulas and other utensils away from pitcher or chopping container during operation to prevent risk of personal injury and/or damage to the appliance. A scraper may be used only when the appliance is not running.
- 22** **CAUTION: DO NOT BLEND HOT LIQUIDS.**
- 23** **DO NOT** overfill.
- 24** **DO NOT** try to defeat the interlock mechanism. Make sure that the cutting blades are properly inserted before operating the appliance.
- 25** **DO NOT** operate the appliance empty.
- 26** If the appliance overheats, a thermal switch will become activated and shut off the motor. To reset, unplug the appliance and let it cool down for approximately 15 minutes before using again.
- 27** **THIS PRODUCT IS INTENDED FOR HOUSEHOLD USE ONLY.** Do not use this appliance for anything other than its intended use. Do not use outdoors.
- 28** The maximum rating is based on the 16 oz Nutri Ninja® cup. This drives the greatest power. Other recommended attachments may draw significantly less power or current.
- ⚠ CAUTION:** When mixing pizza dough or any heavy mix such as bread dough or pastry dough, mix for up to 30 seconds, then let the appliance rest for approximately 1 minute before mixing again to prevent overheating of the appliance.
- ⚠ WARNING:** Extension cords are not recommended for use with this product.

SAVE THESE INSTRUCTIONS

THIS BOOK COVERS MODEL NUMBERS:

| | |
|--------------|--------------|
| QB3000 30 | QB3000QCE 30 |
| QB3004 30 | QB3000QGN 30 |
| QB3005 30 | QB3000QPR 30 |
| QB3000CO 30 | QB3000QR 30 |
| QB3000Q 30 | QB3000QTQ 30 |
| QB3000QBK 30 | |

TECHNICAL SPECIFICATIONS

Voltage: 120 V, 60 Hz.

Power: 700 Watts

Processor Bowl Capacity: 40 oz. (5 cups, 1.2 L)

Single Serve Capacity: 16 oz. (2 cups, 500 mL)

Euro-Pro, Ninja, Sip & Seal and **Nutri Ninja** are trademarks of Euro-Pro Operating LLC.



Contents

**Thank you for
purchasing the
Nutri Ninja® 2-in-1.**

| | |
|---|----|
| Getting to know your Nutri Ninja® 2-in-1 | 7 |
| Using the Nutri Ninja® 2-in-1 | 8 |
| Using the Nutri Ninja® 2-in-1 Cup | 9 |
| Assembling the Nutri Ninja® 2-in-1 Food Processor Bowl | 10 |
| Using the 4 Blade..... | 10 |
| Using the Single and Double Dough Blades..... | 11 |
| Using the Nutri Ninja® 2-in-1 Bowl-In-Bowl Chopper (may not be included)..... | 12 |
| Using the Nutri Ninja® 2-in-1 Blender Pitcher (may not be included)..... | 13 |
| Cleaning and Maintenance | 15 |
| Troubleshooting Guide..... | 16 |
| Warranty & Registration..... | 19 |

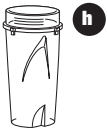
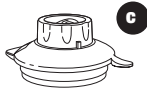
The Nutri Ninja® 2-in-1 is an indispensable kitchen tool that is perfect for blending, chopping, mixing or pureeing when preparing your favorite recipes. For best results, be sure to carefully read all the instructions contained in the manual before using this appliance.



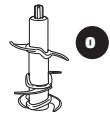
FEATURES:

- Interchangeable “2-in-1” Power Pod that flips for different meal-making functions.
- 40 oz. All-in-One Bowl for food processing, mixing, chopping and blending.
- Single Serve Blending in 16 oz. Nutri Ninja® Cups.
- BPA-free Nutri Ninja® Cups, Food Processor Bowl, Blender Pitcher, Bowl-in-Bowl Chopper, Storage Lids and Sip & Seal™ Lids.
- Drip free pour spout.
- Hidden Drain Holes - prevent water retention from dishwasher.
- Patented Ninja® Blade Technology.

Getting To Know Your Nutri Ninja® 2-in-1



Optional Accessories



- a** Power Pod
- b** 40 oz. Processor Bowl
- c** Geared Processor Lid
- d** 4 Blade
- e** Single Dough Blade
- f** Double Dough Blade
- g** 40 oz. / 56 oz. Storage Lid
- h** Nutri Ninja® Cup (x2)
- i** Nutri Ninja® Blade Assembly
- j** Sip & Seal™ Lids (x2)

Optional Accessories

- k** 16 oz. Bowl-in-Bowl Chopper
- l** Storage Lid (Bowl-in-Bowl Chopper)
- m** 4 Blade (Bowl-in-Bowl Chopper)
- n** 56 oz. Blender Pitcher
- o** 6 Blade (Blender Pitcher)

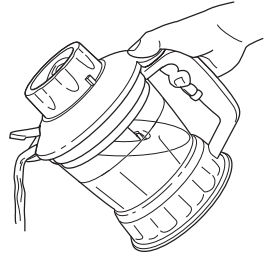
NOTE: Blades are **not** interchangeable between cups and jars.

Using the Nutri Ninja® 2-in-1

PLEASE KEEP THESE IMPORTANT SAFEGUARDS IN MIND WHEN USING THE APPLIANCE:

- ⚠ **IMPORTANT:** Never add ingredients into the container before placing the blade in first.
- ⚠ **IMPORTANT:** Attachments are not interchangeable.
- ⚠ **IMPORTANT:** **DO NOT** attempt to operate the appliance without the lid on.
- ⚠ **IMPORTANT:** Never run the appliance empty.
- ⚠ **CAUTION:** **DO NOT PROCESS HOT FOODS OR HOT LIQUIDS.**
- ⚠ **WARNING:** Never leave the appliance unattended while in use.
- ⚠ **CAUTION:** Blades are loose. Either pour contents out with cover on or remove blades before pouring.

- ⚠ **CAUTION:** If using the pour spout, make sure your thumb is firmly pressed down on the thumb tab of the lid to secure the lid.



- ⚠ **CAUTION:** If pouring with the lid removed, **ALWAYS** remove the blade assembly first.



- ⚠ **CAUTION:** Blades are sharp! Use extreme caution when handling the blade assemblies. Always hold them by the shaft.

BEFORE FIRST USE

- 1 Remove all packaging material and labels from the appliance.
- 2 Wash the storage lid, Sip & Seal™ lids, pitcher, bowl, Nutri Ninja® cups and blades in warm, soapy water with a soft cloth. **Use caution when washing the blade assemblies as the blades are very sharp.** Rinse and dry thoroughly.
- 3 The blender pitcher, food processor bowl, Nutri Ninja® cups, storage lid, Sip & Seal™ lids and blades, are all dishwasher safe. It is recommended that the storage lids, Sip & Seal™ lids and blades be placed on the top rack. Ensure that the blades are removed from the containers before placing in the dishwasher.
- 4 The Geared Lid is **NOT** dishwasher safe. Do not submerge in water. **Hand wash only.**
- 5 Wipe the Power Pod clean with a damp cloth and wipe dry.

Using the Nutri Ninja® 2-in-1 Cup



Fig. 1

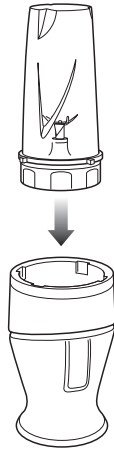


Fig. 2

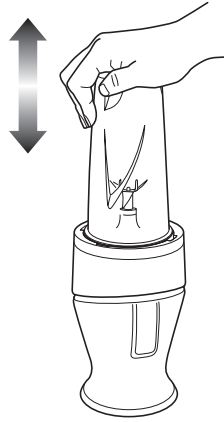


Fig. 3

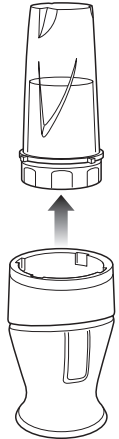


Fig. 4

▲ IMPORTANT: Make sure that the Power Pod is plugged in for use.

- 1 Place the Power Pod upside down (with pulse button down) on a clean, dry, level surface such as a counter or table top.
- 2 Add ingredients to the Nutri Ninja® cup.
NOTE: Do not overfill! To avoid spilling, do not add ingredients past the "Max" fill line.
- 3 Place the Nutri Ninja® blade assembly onto the cup and screw it tightly until a good seal is achieved. **(Fig. 1)**
- 4 Turn the Nutri Ninja® cup upside down and place it onto the Power Pod. Press down on the Nutri Ninja® cup to pulse or blend. **(Fig. 2, Fig. 3)**

- 5 Once desired consistency is reached, remove pressure from Nutri Ninja® cup. Pull straight up to remove. **(Fig. 4)**
- 6 Turn the cup upright and remove the single serve blade by twisting the blade assembly counter clockwise.
- 7 Place the Sip & Seal™ drinking lid onto the Nutri Ninja® cup, twist to seal and enjoy!
- 8 Make sure that the Power Pod is unplugged when not in use.

NOTE: To order additional Nutri Ninja® Cups, please visit our website: www.ninjakitchen.com or feel free to contact customer service: **1-877-646-5288**.

Assembling the Nutri Ninja® 2-in-1 Food Processor Bowl

⚠ WARNING: DO NOT try to assemble or operate the Power Pod, Geared Lid and blades together outside of the containers.

⚠ CAUTION: If using the pour spout, make sure your thumb is firmly pressed down on the thumb tab of the lid to secure the lid.

⚠ CAUTION: If pouring with the lid removed, ALWAYS remove the blade assembly first.

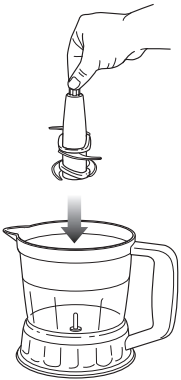


Fig. 5

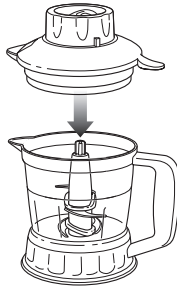


Fig. 6

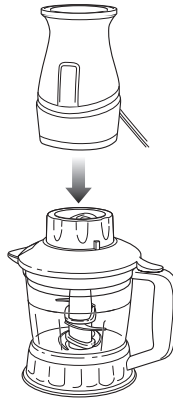


Fig. 7

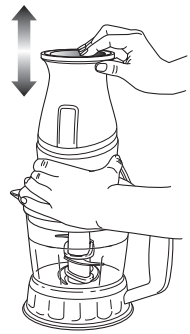


Fig. 8

 For best results, use short "PULSES" by pushing down on the button in short, 1 second bursts until desired consistency is achieved.

USING THE 4 BLADE

⚠ IMPORTANT: It is recommended to pulse until the ingredients are mixed unless recipe instructions state otherwise. If the unit is run continuously for more than 30 seconds, let the Power Pod rest for 1 minute before using again.

⚠ CAUTION: Blades are sharp! Use extreme caution when handling the blades. Always hold them by the shaft.

⚠ IMPORTANT: Never run the appliance empty.

⚠ CAUTION: Blades are removable. If pouring with the lid removed, always remove the blade assembly first. If using pour spout, make sure the lid is secure on the jar by firmly pressing on the thumb tab.

- 1 Place the Nutri Ninja® 2-in-1 Food Processor Bowl on a clean, dry, level surface.
- 2 Place the 4 Blade over the spindle pin inside the Food Processor Bowl. **(Fig. 5)**
- 3 Place ingredients in the Food Processor Bowl.
NOTE: For best results add wet ingredients first and then add the dry ingredients.
- 4 Place the Geared Lid onto the top of the Food Processor Bowl making sure the lid is securely in place. **(Fig. 6)**
- 5 Plug the power cord into an electrical outlet and place the Nutri Ninja® 2-in-1 Power Pod on top of the Geared Lid. Pulse until all ingredients are well mixed. **(Fig. 7, Fig. 8)**
- 6 Once processing is completed and the blades have stopped spinning, remove the Nutri Ninja® 2-in-1 Power Pod and the Geared Lid. Remove the 4 Blade.



Use the single dough blade for making pizza dough, yeast doughs, and batter. Use the double dough blade for making cookie dough only.

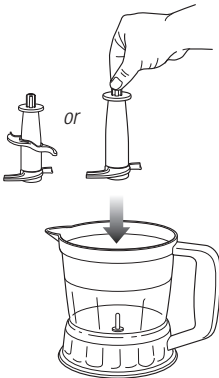


Fig. 9

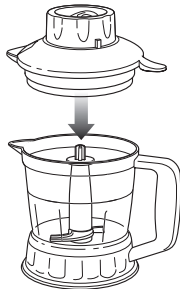


Fig. 10

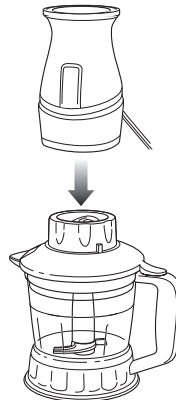


Fig. 11

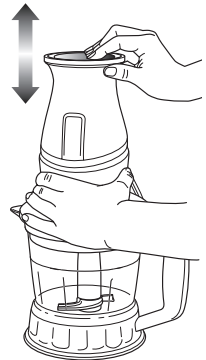


Fig. 12

USING THE SINGLE AND DOUBLE DOUGH BLADE

⚠ IMPORTANT: When making any type of dough, **DO NOT** run the Power Pod continuously for more than 30 seconds. Do not add more than 2 cups of flour maximum when making dough.

⚠ IMPORTANT: Never run the appliance empty.

- 1 Place the Nutri Ninja® 2-in-1 Food Processor Bowl on a clean, dry, level surface.
- 2 Place the Dough Blade over the spindle pin inside the Food Processor Bowl. **(Fig. 9)**
- 3 Place ingredients in the Food Processor Bowl.
NOTE: For best results add wet ingredients first and then add the dry ingredients.

- 4 Place the Geared Lid onto the top of the Food Processor Bowl making sure the lid is securely in place. **(Fig. 10)**
- 5 Plug the power cord into an electrical outlet and place the Nutri Ninja® 2-in-1 Power Pod on top of the Geared Lid. Pulse until all ingredients are well mixed. **(Fig. 11, Fig. 12)**
- 6 Once processing is completed and the blades have stopped spinning, remove the Nutri Ninja® 2-in-1 Power Pod and the Geared Lid. Remove the Dough Blade and the dough.

Using the Nutri Ninja® 2-in-1 Bowl-In-Bowl Chopper (may not be included)

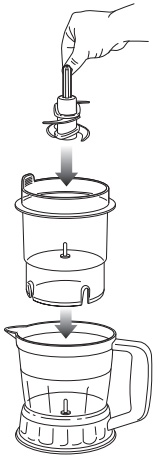


Fig. 13

💡 Make sure to align the chopper tab with the processor bowl pour spout or the chopper will not activate.

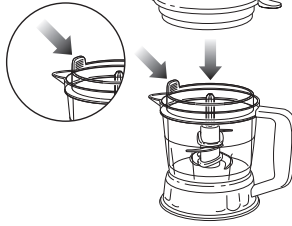


Fig. 14

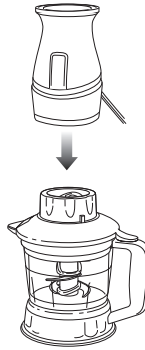


Fig. 15

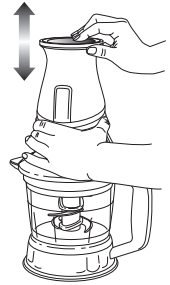


Fig. 16



For best results, use short **"PULSES"** by pushing down on the button in short, 1 second bursts until desired consistency is achieved.

- ❗ **IMPORTANT:** Never run the appliance empty.
 - ❗ **CAUTION:** Blades are sharp! Use extreme caution when handling the blades. Always hold by the shaft.
 - ❗ **WARNING: DO NOT** crush ice in the Bowl-in-Bowl Chopper or damage may occur to the unit.
- 1 Place the Nutri Ninja® 2-in-1 Food Processor Bowl on a clean, dry, level surface.
 - 2 Insert the Chopper into the Food Processor Bowl. Ensure that the gripping tab faces the pour spout when installed. (Fig. 13)
 - 3 Holding the Chopper blade assembly by the shaft, place it onto the spindle pin inside the Chopper. (Fig. 13)
 - 4 Place the food into the Chopper. Place the Geared Lid on top and then the Power Pod. (Fig. 14, Fig. 15)

NOTE: In order to obtain a better quality of chopping, operate the appliance by using the "pulse" method. **DO NOT** operate the appliance continuously for more than 30 seconds at a time. Be careful not to over process. For coarsely chopped foods, use repeated short pulsing action until the desired consistency is reached.

- 5 If the ingredients stick to the side of the Chopper during processing, stop the appliance by releasing the pulse button, remove the Power Pod and Geared Lid. Use a spatula to dislodge the pieces and then replace the Geared Lid and the Power Pod. Continue processing.

- 6 To stop the appliance, release your fingers from the on/off pulse button on the Power Pod. (Fig. 16)
- 7 Make sure that the blades have stopped completely before removing the Power Pod and Geared Lid.
- ❗ **CAUTION:** Blades are not attached. Do not pour out contents without removing the blades first.
- 8 Carefully hold the blade assembly by the shaft and remove it from the Chopper before emptying the contents of the Chopper.

HINTS & TIPS FOR USING YOUR NUTRI NINJA® 2-in-1 Chopper

- The chopping blades can be used for chopping meat, fish, vegetables, cheese etc.
- Pre-cut larger pieces to make them fit into the Chopper. When chopping hard foods (e.g., meat, cheese) cut into 1-inch cubes.
- For coarse chopping, use short, quick pulses and monitor food texture.

Using the Nutri Ninja® 2-in-1 Blender Pitcher (may not be included)

⚠ WARNING: DO NOT try to assemble or operate the Power Pod, Geared Lid and blades together outside of the containers.



⚠ CAUTION: If using the pour spout, make sure your thumb is firmly pressed down on the thumb tab of the lid to secure the lid.

⚠ CAUTION: If pouring with the lid removed, ALWAYS remove the blade assembly first.

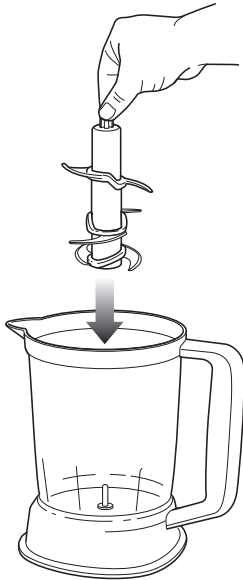
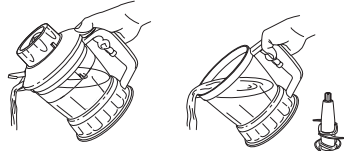


Fig. 17

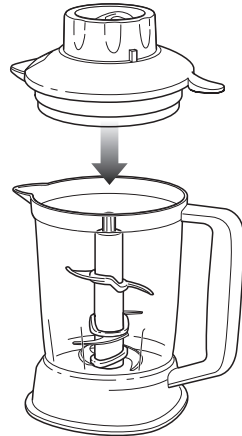


Fig. 18

⚠ CAUTION: Blades are removable, if pouring with lid removed, always remove the blade assembly first. If using pour spout, make sure the lid is locked onto the pitcher/blender by firmly pressing on the thumb tab.

⚠ CAUTION: Blades are sharp! Use extreme caution when handling the blades and when placing the blade assemblies inside the containers. Always hold by the shaft.

⚠ IMPORTANT: Never run the appliance empty.

1 Place the Nutri Ninja® 2-in-1 Blender Pitcher on a clean, dry, level surface.

2 Holding the 6 blade assembly by the shaft, place it onto the spindle pin inside the Blender Pitcher. (**Fig. 17**)

• Use **ONLY** the 6 blade in the 56 oz. pitcher.

3 Add the ingredients to be processed into the Blender Pitcher.

⚠ IMPORTANT: Never add ingredients into the Blender Pitcher before placing the blades in first.

4 Place the Geared Lid onto the top of the Blender Pitcher. (**Fig. 18**)

Using the Nutri Ninja® 2-in-1 Blender Pitcher - cont. (may not be included)

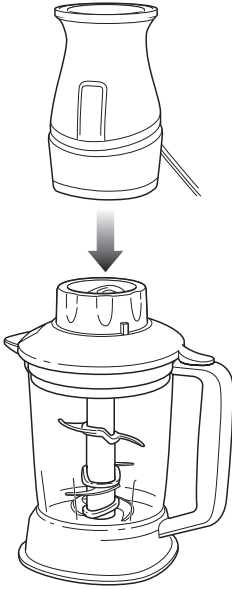


Fig. 19

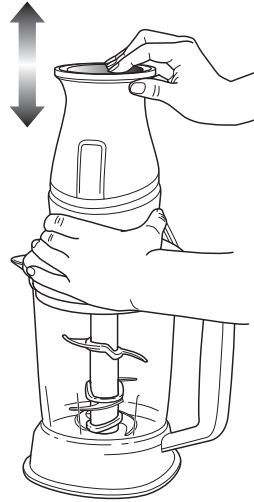


Fig. 20

 For best results, use short **"PULSES"** by pushing down on the button in short, 1 second bursts until desired consistency is achieved.

- 5 Place the Power Pod on top of the Geared Lid making sure that it is securely in place. **(Fig. 19) DO NOT** attempt to operate the appliance without the Geared Lid in place.
- 6 To start the appliance, plug the power cord into the electrical outlet, securely hold Power Pod while operating and press the on/off pulse button located on the top of the Power Pod.
- 7 Hold the Blender Pitcher firmly while depressing the on/off pulse button to ensure the unit stays in place.
- ▲ NOTE: DO NOT** operate the appliance continuously for more than 30 seconds at a time.
- 8 To stop the appliance, release fingers from the on/off pulse button. **(Fig. 20)**
- 9 Make sure that the blades have stopped completely before removing the Power Pod or the Geared Lid.
- 10 If the ingredients stick to the side of the Blender Pitcher, stop the appliance, remove the Power Pod and the Geared Lid. Use a spatula to dislodge the pieces and then replace the Geared Lid and the Power Pod. Continue processing.
- 11 Depending on the consistency of the contents, use the pour spout to empty liquid contents.
- 12 For thicker consistencies, first remove Geared Lid and blade assembly (by its shaft), then empty contents of the Blender Pitcher.

Cleaning and Maintenance

HOW TO CLEAN

⚠ CAUTION: Make sure that the Power Pod is unplugged from the power source before inserting or removing any attachment and before cleaning.

⚠ CAUTION: DO NOT immerse the Power Pod or the Geared Lid in water or any other liquid.

- 1 Separate all parts from each other.
- 2 Clean the Power Pod with a damp cloth and wipe dry.
- 3 Place blender pitcher, food processor bowl, chopping bowl and single serve cups on the bottom rack of the dishwasher. Place the storage lids, Sip & Seal™ lids and attachments on the top rack. **Use caution when handling the blade assemblies as the blades are very sharp.**

4 The Geared Processor Lid is NOT dishwasher safe. DO NOT SUBMERGE. Hand wash only.

NOTE: You may also wash the containers by filling the container to the Max Fill line with warm water and a drop of dish washing detergent, placing the blade assembly in the container, Geared Lid and Power Pod on top and pulsing a few times. Do not fill the container past the Max Fill line with water because it will overflow. Once clean, remove the Power Pod, Geared Lid and blade assembly. Rinse the container and attachment under running water. Wipe the Power Pod with a damp cloth. Allow all the parts to dry before storing.

If the appliance needs servicing, please call customer service at 1-877-646-5288.

HOW TO STORE

- 1 Secure the power cord by wrapping the cord around the Power Pod. Do not place anything on top of the Power Pod. Place the Bowl-in-Bowl Chopper inside the 40 oz. Food Processor Bowl for storage. Store the rest of the attachments in a safe place where they will not be damaged and will not cause a hazard.

RESETTING THE MOTOR THERMOSTAT

The Nutri Ninja® 2-in-1 features a unique safety system which prevents damage to the unit's motor and drive system should it be inadvertently overloaded. If the appliance is being overloaded, the motor will stop. To reset the appliance, follow the resetting procedure below:

- 1 Unplug the appliance from the electrical outlet.
- 2 Remove the Power Pod and Geared Lid and empty the container and ensure that no food is jamming the blade assembly.
- 3 Allow the appliance to cool for approximately 15 minutes.
- 4 Replace the Geared Lid and Power Pod onto the container and re-plug the appliance into the electrical outlet.
- 5 Proceed to use the appliance while making sure not to exceed the recommended maximum capacities.

Suggested Recipe

Ranero Burger

Ingredients:

- 4 oz London Broil, 2 inch chunks
- Salt & Pepper
- Non-Stick Spray

Directions:

1. Place the meat into the 16-ounce Nutri Ninja® Cup.
2. Hold down and blend continuously for 15 seconds. Form into one single patty and season with salt and pepper.
3. Spray a large skillet with non-stick spray and over med-high heat, cook the burger 2-3 minutes per side for medium rare, or up to 5 minutes per side for well done. Serves 1.

Troubleshooting Guide

| PROBLEMS | POSSIBLE REASONS & SOLUTIONS |
|--|---|
| Motor Doesn't Start or Blades Don't Rotate. | <ul style="list-style-type: none">• Make sure the Power Pod is securely placed on Geared Lid.• Make sure the Geared Lid is securely on container.• Check that the plug is securely inserted into the electrical outlet.• Check fuse or breaker in your home. Replace fuse/reset breaker.• Check that the bottom of Power Pod is clean and there is no food blocking connection when placing on containers.• There is too much food in the container. Remove some food and try again.• The unit has overheated. Unplug and wait approximately 15 minutes before using again. |
| Food is Unevenly Chopped. | <ul style="list-style-type: none">• Either too much food is being chopped at one time, or the pieces are not small enough. Try cutting the food into smaller pieces of even size and processing smaller amounts per batch.• Adjust pulse duration or pulse time. |
| Food is Chopped Too Finely or is Too Watery. | <ul style="list-style-type: none">• The food has been over processed. Use brief pulses or process for a shorter time. Let blades stop completely between pulses. |
| Food Collects in Geared Lid or on the Sides of the Nutri Ninja® Blender Pitcher or Food Processor Bowl. | <ul style="list-style-type: none">• Too much food may be being processed at one time. Turn the Power Pod off. When the blades stop rotating, remove the Power Pod and the Geared Lid. Remove some of the food being processed. |
| You Cannot Achieve Snow From Solid Ice. | <ul style="list-style-type: none">• Do not use ice that has been sitting out or has started to melt.• Be sure to use short pulses in the beginning to break up large pieces.• Do not attempt to crush ice into snow in the Bowl-In-Bowl Chopper. |

To purchase replacement parts, please visit our website: www.ninjakitchen.com or contact customer service: 1-877-646-5288.



EURO-PRO®

ONE (1) YEAR LIMITED WARRANTY

EURO-PRO Operating LLC warrants this product to be free from material defects and workmanship for a period of one (1) year from the date of purchase when utilized for normal household use, subject to the following conditions, exclusions and exceptions.

The liability of **EURO-PRO Operating LLC** is limited solely to the cost of the repair or replacement of the unit at our option. This Limited Warranty does not cover normal wear of parts and does not apply to any unit that has been tampered with or used for commercial purposes. This Limited Warranty does not cover damage caused by misuse, abuse, negligent handling or damage due to faulty packaging or mishandling in transit. This Limited Warranty does not cover damage or defects caused by or resulting from damages from shipping or repairs, service or alteration to the product or any of its parts, which have been performed by a repair person not authorized by **EURO-PRO Operating LLC**.

If your appliance fails to operate properly while in use under normal household conditions within the warranty period, return the complete appliance and accessories, freight prepaid. For assistance with warranty service options or customer support, please call our customer care and product specialists at 1 (877) 646-5288 or visit our website www.ninjakitchen.com.

If the appliance is found to be defective in material or workmanship, **EURO-PRO Operating LLC** will repair or replace it free of charge. Proof of purchase is required and a fee of \$19.95 will apply to cover the cost of return freight. *

This Limited Warranty is extended to the original purchaser of the unit and excludes all other legal, implied and/or conventional warranties. The responsibility of **EURO-PRO Operating LLC** if any, is limited to the specific obligations expressly assumed by it under the terms of this Limited Warranty. In no event is **EURO-PRO Operating LLC** liable for incidental or consequential damages to anyone of any nature whatsoever. Some states do not permit the exclusion or limitation of incidental or consequential damages, so the above may not apply to you.

This Limited Warranty gives you specific legal rights, and you may also have other rights which vary from state to state or from province to province.

***IMPORTANT: Carefully pack item to avoid damage in shipping. Be sure to include proof of purchase date and to attach tag to item before packing with your name, complete address and phone number with a note giving purchase information, model number and what you believe is the problem with the item. We recommend you insure the package (as damage in shipping is not covered by your Limited Warranty). Mark the outside of your package "ATTENTION CUSTOMER SERVICE".**

Product Registration

Please visit www.ninjakitchen.com or call **1-877-646-5288** to register your new Ninja® product within ten (10) days of purchase. You will be asked to provide the store name, date of purchase and model number along with your name and address.

The registration will enable us to contact you in the unlikely event of a product safety notification. By registering you acknowledge to have read and understood the instructions for use, and warnings set forth in the accompanying instructions.

Euro-Pro Operating LLC

US: Newton, MA 02459

CAN: Ville St-Laurent, QC H4S 1A7

1-877-646-5288

www.ninjakitchen.com

Copyright© Euro-Pro Operating LLC 2014

Euro-Pro, Nutri Ninja, Sip & Seal and Ninja are trademarks of Euro-Pro Operating LLC. We are constantly striving to improve our products, therefore the specifications contained herein are subject to change without notice.

Illustrations may differ from actual product.

Printed in China

QB3000series_30_IB_ENG_140824_4